

BIBLIOGRAPHY

- Ali, B. H., Mousa, H. M., & El-Mougy, S. 2003. "The effect of a water extract and anthocyanins of *Hibiscus sabdariffa* L. on paracetamol induced hepatotoxicity in rats". *Phytotherapy Research*. Vol. 17. pp. 56–59.
- Antony, J. I. X., Josan, P. D. & Shankarnarayana, M. L. 1998. "Quantitative analysis of (-) hydroxycitric acid and (-)-hydroxycitric acid lactone in *Garcinia* fruits and *Garcinia* products". *J. Food Sci. Technology*. Vol. 35. pp. 399-402.
- AOAC. 1970. *Official Methods of Analysis*, (11th ed). Assosiation of Official Analytical Chemists. Washington, DC USA.
- Balasubramanyam, K., Chandrasekhar, B., Ramadoss, C. S. & Rao, P. V. S. 2000. *Soluble double metal salt of group IA and IIA of (-)- hydroxycitric acid, process of preparing the same and its use in beverages and other food products without effecting their flavor and properties*. U.S. Patent 6160172.
- Bischoff, H. 1994. "Pharmacology of α -glucosidase inhibition". *Eur. J. Clin. Invest.* Vol 24. pp. 3-10.
- Burkill, J. H. 1993. *A Dictionary of the Economic Products of The Malay Peninsula*, (Vol. 1). Petaling Jaya:Malaysia Nature Society.
- Chang-Che, Chen, Fen-Pi, Chou, Yung-Chyan, Ho, Wea-lung, Lin, Chin-Pin, Wang, Erl-Shyh, Kao, et al. 2004. "Inhibitory effects of *Hibiscus sabdariffa* L. extract on low-density lipoprotein oxidation and anti-hyperlipidemia in fructose-fed and cholesterol-fed rats". *Journal of the Science of Food and Agriculture*, Vol 84. (15): pp. 1989–1996.
- Chang, S. V. 2006. *Penilaian lapangan ke atas dua titisan mutan roselle (Hibiscus sabdariffa L.) HS03100-29-3-3-1 dan HS03100-28-4-4-1 serta kajian ciri fisiko-kimia kaliks*. (Bachelor Thesis). Universiti Kebangsaan Malaysia.
- Cheema-Dhadli, S., Halperin, M. L. & Leznoff, C. C. 1973. "Inhibition of enzymes which interact with citrate by (-)-hydroxycitrate and 1,2,3-tricarboxybenzene". *Eur. J. Biochem.* Vol 38. pp. 98-102.
- Cloutre, D. & Rosenbaum, M. 1994. *The diet and health benefits of HCA*. Keats Publishing Inc. USA.
- De Pena, R. G. & Caimi, E. A. 1967. "Hygroscopicity and chemical composition of silver iodide smoke used in cloud seeding experiments". *Journal of Atmospheric Science*. Vol. 24. pp. 383-386.

- Dickel, M. L., Rates, S. M. K. & Ritter, M. J. 2006. "Plants popularly used for losing weight purposes in Porto Alegre, South Brazil". *Journal of Ethnopharmacology*. Vol. 109. pp. 60-71.
- Duke, J. 1983. *Handbook of Energy Crops*. Purdue University USA.
- Farayi, M.H., Tarkhani, A.H. 1999. "The effect of sour tea (*Hibiscus sabdariffa*) on essential hypertension". *Journal of Ethnopharmacology*. Vol. 7. pp. 231-236.
- Greenwood, M. R. C & Cleary M. P. 1981. "Effects of (-) hydroxycitric acid on development of obesity in the Zucker obese rat". *American Journal of Physiology*. Vol. 240. pp.72-78.
- Greenwood & Robinson, M. 1999. *Natural weight loss miracles*. New York.
- Griebel, C. Z. 1942. "Z. Lebensm. Untersuch". *Chem. Abstract*. Vol. 37. pp. 4704.
- Glusker, J. P., Minkin, J. A., Casciato, C. A. & Soule, F. B. 1969. "Absolute configuration of the naturally occurring hydroxycitric acids". *Arch. Biochem. Biophys.* Vol.132. pp. 573-577.
- Glusker, J. P., Minkin, J. A. & Casciato, C. A. 1971. "The structure and absolute configuration of the calcium salt of garcinia acid, the lactone of (-)-hydroxycitric acid". *Acta Crystallogr.* Vol. B27. pp. 1284-1293.
- Guthrie, R. W. & Kierstead, R. W. 1977. *Hydroxycitric acid derivatives*. U.S. Patent 4006166.
- Halimaton S. O. 2005. *Kajian kromosom dan pembinaan deskriptor bagi tanaman roselle (Hibiscus sabdariffa L.)*. (Bachelor Thesis). Universiti Kebangsaan Malaysia.
- Hamilton, J. G., Sullivan, A. C., Kritchevsky, D. 1977. "Hypolipidemic activity of (-)-hydroxycitrate". *Lipids*. Vol 12. pp. 1-9.
- Hansawadi, C., Kawabata, J & Kasai, T. 2000. "α-amylase inhibitors from roselle (*Hibiscus sabdariffa* L.) tea". *Biosci. Biotech. Biochem.* Vol. 64. pp. 1041-1043.
- Hansawadi, C., Kawabata, J & Kasai, T. 2001. "Hibiscus acid as an inhibitor of starch digestion in the Caco-2 cell model system". *Biosci. Biotech. Biochem.* Vol. 65. pp. 2087-2089.
- Hasani-Ranjbar, S., Larjani, B. & Abdollahi, M. 2008. "A systematic review of Iranian medicinal plants useful in diabetes mellitus". *Arc. Med. Sci.* Vol. 4. pp. 285-292.
- Hayamizu, K., Hirakawa, H., Oikawa, D., Nakanishi, T., Tachiba, T & Furuse, M. 2003. "Effect of Garcinia cambogia extract on serum leptin serum insulin mice". *Fitoterapia*. Vol.74. April. pp. 267-273.

- Heymsfield, S. B. , Allison, D. 1998. “*Garcinia cambogia* (hydroxycitric acid) as a potential antiobesity agent : Randomized controlled trial”. *Journal of The American Medical Association*. Vol. 280 (18): pp. 1596-1600.
- Hida, H., Yamada, T., and Yamada, Y. 2005. “Production of hydroxycitric acid by microorganisms”. *Biosci. Biotechnol. Biochem*. Vol. 69. pp. 1555-1561.
- Hoffman, G. E., Andres, H., Weiss, L., Kreisel, C. & Sander, R. 1980. “Properties and organ distribution of ATP citrate (pro-3S)-lyase”. *Biochim. Biophys. Acta* Vol. 620. pp. 151-158.
- Ibnusaud, I., Puthiamparmpil, T. T. & Thomas, B. 2000. *Convenient method for the large-scale isolation of Garcinia acid*. U.S. Patent 6147228.
- Ismail, M. N. 2002. “The nutrition and health transition in Malaysia”. *Public Health Nutrition* Vol.5. pp. 191-195.
- Ismail, M. N & Tan, C. L. 2002. *Prevalence of obesity in Malaysia*. In: Inoue & Zimmet (eds). *The Asia-Pacific Perspective :Redefining Obesity and its Treatment*. WHO(WPRO)/IASO/10TF: Health Communications Australia. pp. 10-13.
- Ismail, M. N. & Vickneswary, E. N. 2000. *Prevalence of obesity in Malaysia. : data from three ethnic populations*. In: Inoue & Zimmet (eds). *The Asia-Pacific Perspective :Redefining Obesity and its Treatment*. WHO(WPRO)/IASO/10TF: Health Communications Australia.
- Ismail, M. N., Zawiah, H., Chee S. S. & Ng, K. K. 1995. “Prevalence of obesity and chronic energy deficiency (CED) in adult Malaysians”. *Mal. J. Nutr.* Vol. 1. pp. 1-9.
- Jayaprakasha, G. K. and Sakariah, K. K. 1998. “Determination of organic acids in *Garcinia cambogia* (Desr.) by high-performance liquid chromatography”. *Journal of Chromatography A*. Vol. 806. pp. 337-339.
- Jayaprakasha, G. K. & Sakariah, K. K. 2000. “Determination of (-)- hydroxycitric acid in commercial samples of *Garcinia cambogia* extracts by liquid chromatography using ultraviolet detection”. *J. Liq. Chromatogr. Relat. Technol.* Vol. 23. pp. 915-923.
- Jayaprakasha, G. K. and Sakariah, K. K. 2002. “Determination of organic acid in leaves and rinds of *Garcinia indica* (Desr.) by LC”. *Journal of Pharmaceutical and Biomedical Analysis*. Vol. 28. pp. 379-384.
- Jena, B. S, Jayaprakasha, K. K, Singh, R. P. and Sakariah, K. K. 2002. “Chemistry and biochemistry of (-)-hydroxycitric acid from *Garcinia*”. *J. Agric. Food Chem.* Vol. 50. pp. 10-22.

- Jenkins, D. J., Taylor, R. H., Goff, D. V., Fielden, H., Misiewicz, J. J., Sarson, D. L., Bloom, S. R. & Alberti, K. G. 1981. "Scope and specificity of acarbose in slowing carbohydrate absorption in man". *Diabetes*. Vol. 30. pp. 951-954.
- Kaats, G. R., Pullin, D., Perker, L. K., Keith, P. L. & Keith, S. 1997. "Reduction of body fat as a function of taking a dietary supplement containing *Garcinia cambogia* extract, chromium picolinate and L-Carnitine – a double blind placebo controlled study" (Abstract).
- Kasai, T, Kawabata, J. & Hansawadi, C. 2000. *Japan Kokai Tokkyo Koho 239164*. Tokyo, Japan.
- Krishnamurthy, N., Lewis, Y. S. & Ravindranath B., 1982. "Chemical constituents of kokum fruit rind". *J. Food Sci. Technol.* Vol. 19. pp. 97-100.
- Kuriyan, K. I., Pandya, K. C. 1931. "A note on the main constituents of the dried rind of the fruit of *Garcinia cambogia*". *J. Ind. Chem Soc.* Vol. 81. pp. 469.
- Liu, J. P., Zhang, M., Wang, W. Y. & Grimsgaard, S. 2004. *Chinese herbal medicines for type 2 diabetes mellitus*. Cochrane Database Syst. Rev. CD003642.
- Lewis, Y. S., and Neelakantan, S. 1965. "(–)-Hydroxycitric acids: The principal acid in the fruits of *Garcinia cambogia*". *Phytochemistry* Vol. 4. pp. 619-625.
- Lewis, Y. S. 1969. "Isolation and properties of hydroxycitric acid". In. Lowenstein, J. M. (Ed.). *Methods in Enzymology: Citric Acid Cycle*, p. 613-619. New York: Academic Press.
- Lowenstein, J. M. 1971. "Effect of (–)-hydroxycitrate on fatty acidsynthesis by rat liver *in vivo*". *J. Biol. Chem.* Vol. 246. pp. 629-632.
- Lowenstein, J. M. & Bruneu-graber, H. 1981. "Hydroxycitrate". In *Methods in Enzymology*; Lowenstein, J. M., (Ed.) Vol. 72. pp. 486-497. Academic Press: New York.
- Majeed, M., Badmaev, V. & Rajendran, R. 1998. *Potassium hydroxycitrate for the suppression of appetite and induction of weight loss*. U.S. Patent 5783603.
- Majeed, M., Badmaev, V. and Rajendran. R. 2005. *Process for the production of potassium hydroxycitric acid and composition containing the potassium hydroxycitric acid*. US Patent Document 6,770,782 B17 3/2004 562/580.
- Martius, C. & Maue, R. 1941. "Preparation, physiological behavior, and importance of hydroxycitric acid and its isomers". *Z. Physiol. Chem.* Vol. 269. pp. 33-37.

Mat Isa, A., Md. Isa, P.M. and Abd. Aziz, A.R. 1985. "Analisis kimia dan pemrosesan roselle (*Hibiscus sabdariffa* L.)". *MARDI Research Bulletin*. Vol. 13. pp. 68-74.

McCaleb, R. 21 April 2008. "Roselle production manual (*Hibiscus sabdariffa*)". Herb Research Foundation, USA. www.herbs.org/africa/hibiscus_production_manual.html.

Mc Carty, M. F. 1994. "Promotion of hepatic lipid oxidation and gluconeogenesis as a strategy of appetite control". *Medical Hypothesis*. Vol. 42. pp. 215-225.

n.a. "Merck Index". 1996. Merck Research Laboratories New Jersey, USA.

Moffett, S. A., Bhandari, A. K., Ravindranath, B. & Balasubramanvam, K. 1996. *Hydroxycitric acid concentrate and food products prepared therefrom*. U.S. Patent 5656316.

Moffett, S. A., Bhandari, A. K., Ravindranath, B. & Balasubramanyam, K. 1997. *Hydroxycitric acid concentrate and food products prepared therefrom*. U.S. Patent 5656314.

Mohamad, O. 2001. *Analisis statistik biologi*. Bangi: Penerbit Universiti Kebangsaan Malaysia.

Mohamad, O., Mohd. Nazir, B., Abdul Rahman, M. and Herman, 2002a. "Roselle: A new crop in Malaysia". *Bull. Genetics Soc. Malaysia*. Vol. 7. (1&2): pp. 12-13.

Mohamad, O., Mohd. Nazir, B., Azhar, M., Gandhi, R., Shamsudin, S., Arbayana, A., Mohammad Feroz, K., Liew, S.K., Sam, C. W., Nooreliza, C. E. and Herman, S. 2002b. "Roselle improvement through conventional and mutation breeding". *International Nuclear Conference 2002*. (15-18 October 2002). Kuala Lumpur. pp. 19.

Mohamad, O. and Abd. Rahman, M. 2006. Mangosteen – *Garcinia mangostana*. Southampton Centre for Underutilised Crops, University of Southampton, Southampton, UK. pp. 170.

Mohamad, O., Herman, S., Mohd. Nazir, B., Bakhendri, S., and Abdul Rahman, M. 2004. "Germplasm accessions and crop improvement of roselle (*Hibiscus sabdariffa* L.) in Malaysia". *MSMBB 2004 Scientific Meeting*, (19-21 July 2004). Melaka.

Mohamad, O., Herman, S., Mohd. Nazir, B., Aminah, A., Mamot, S., Bakhendri, S., and Abdul Rahman, M. 2005. "Mutation breeding of roselle in Malaysia". *FNCA 2005 Workshop on Mutation Breeding*, (5-9 Dec 2005). Kuala Lumpur.

Mohamad, O., Herman, S., Mamot, S., Ahmed Mahir, M., Ahmad Bachtiar, B., Halimaton Saadiah, O., and Noor Baiti, A. A. 2007. "Screening of hydroxycitric acid from roselle (*Hibiscus sabdariffa* L.) as a potential anti-obesity agent". *9th Symposium of the Malaysian Society of Applied Biology*. (30-31 May 2007). Penang.

- Moro, C. O. & Basile, G. 2000. "Obesity and medicinal plants". *Fitoterapia*. Vol. 71. pp. 73-82.
- Morton, J. 1987. 18 Februari 2008. "Roselle. In Julia F. Morton (Ed), Fruits of Warm Climates". Florida-Creative Resource Systems Inc. <http://newcrop.hort.purdue.edu/newcrop/morton/roselle.html>.
- Ohia, S. E., Opere, C. A., Le day, A. M., Bagchi, M., Bagchi, D. & Stohs, S. J. 2002. "Safety and mechanism of appetite suppression by a novel hydroxycitric acid extract". *Molecular Cell Biochemistry*. Vol. 238. (1-2): pp. 89-103
- Omobuwajo, T. O., Sanni, L. A. & Balami, Y. A. 2000. "Physical properties of sorrel (*Hibiscus sabdariffa*) seeds". *J. Food Eng.* Vol. 45. (1): pp. 37-41.
- Onyenekwe, P. C., Ajani, E. O., Ameh, D. A., & Gamaniel, K. S. (1999). "Antihypertensive effect of roselle (*Hibiscus sabdariffa*) calyx infusion in spontaneously hypertensive rats and a comparison of its toxicity with that in Wistar rats". *Cell Biochemistry and Function*. Vol.17. (3): pp. 199-206.
- Palmer, J. K. 1955. "Determination of organic acids by ion-exchange chromatography". *Conn. Agric. Exp. Stn. Bull., No. 1*. pp. 589.
- Pau-Ling, T., Salmah, Y., Suhaila, M., Nor Aimi, O. and Noordin, M. M. 2002." Effect of roselle (*Hibiscus sabdariffa* L.) on serum lipids of Sprague Dawley rats". *Nutrition & Food Science*. Vol. 32. (5): pp. 190-196.
- Perry, J.M., 1980. *Medicinal Plants of East and Southeast Asia Attributed Properties and Uses*. MIT Press, Cambridge, MA. pp. 334-360.
- Popkin B. M, Paeratakul S, Zhai F, Keyou G. 1995. "A review of dietary and environmental correlates of obesity with emphasis on developing countries". *Obes Res*. Vol. 3. pp. 145-153.
- Qi, Y.,Chin, K. L., Malekian, F., Berhene, M. & Gager, J. 2005. "Biological characteristics, nutritional and medicinal value of roselle *Hibiscus sabdariffa*". *UFNR* 604.
- Rates, S. M. K. 2001. "Plants are sources of drugs". *Toxicon*. Vol. 39. pp. 603-613.
- Rao, R. N. & Sakariah, K. K. 1988. "Lipid-lowering and antiobesity effect of (-)-hydroxycitric acid". *Nutr. Res*. Vol. 8. pp. 209-212.
- Ross, I. A. 1999. *Medicinal Plants of the world: chemical, constituents, traditional, and modern medicinal uses*. Totowa: Humana Press Inc. pp.165-178.

Rothaikerda & Waitman B. E. 1997. "Effectiveness of a *Garcinia cambogia* and natural caffeine combination in weight loss: a double-blind placebo-controlled pilot study". *International Journal of Obesity*. Vol. 21. (2): pp. 45-53.

n.a. 23 May 2007. Sabinsa Corporation. India. <http://www.sabinsa.com/phyto.htm>.

Sener, A. & Malaisse, W. J. 1991. "Hexose metabolism in pancreatic islets: Effect of HCA upon fatty acid synthesis and insulin glucose stimulated islets". *Biochimie* Vol. 73. (10): 1287-1290.

Singh, R. P., Jayaprakasha, G. K. & Sakariah, K. K. 1995. "(-)- Hydroxycitric acid from *Garcinia cambogia*". *Biol. Memoirs*. Vol. 21. pp. 27-33.

Stallings, W., Blount, T. F., Srere, P. A. & Glusker, J. P. 1979. "Structural studies of hydroxycitrate and their relevance to certain enzymatic mechanisms". *Arch. Biochem. Biophys.* Vol. 193. pp. 431-448.

Suboh, S. M., Bילו, Y. Y., & Aburjai, T. A. 2004. "Protective effects of selected medicinal plants against protein degradation, lipid peroxidation and deformability loss of oxidatively stressed human erythrocytes". *Phytotherapy Research*. Vol. 18. pp. 280-284.

Sullivan, A. C., Triscari, J., Miller, O. N & Wheatley, V. R. 1973. "Effect of (-) hydroxycitrate upon the accumulation of lipids in rat". *J. Lipogenesis*. Vol. 9. pp. 117-121.

Sullivan, A. C., Triscari, J., Hamilton, J. G., Miller, O. N. & Wheatley, V. R. 1974. "Effect of (-)-hydroxycitrate upon the accumulation of lipid in rat". *Lipids*. Vol. 9. pp. 121-128.

Sullivan, A. C. , Triscari, J. & Cheng, L. 1983. "Appetite regulation by drugs and endogenous substances". *Curr. Concep. Nut.* Vol. 12. pp. 159-167.

Sullivan, A. C., Triscari, J. & Gruen, R. K. 1985. "Mechanisms of appetite modulation by drugs". *Federation Proceedings*. Vol. 44. (1): pp. 139-141.

Tattersall, R. 1993. "α-glucosidase inhibition as an adjunct to the treatment of type 1 diabetes". *Diabet. Med.* Vol. 10. pp. 668-693.

Thom, E. 1996. "Hydroxycitrate in the treatment of obesity". *International Journal of Obesity*. Vol. 20. (4): pp. 70-75.

Tsai, P. J., McIntosh, J., Pearce, P., Camden, B. & Jordan. B. R. 2002. "Anthocyanin and antioxidant capacity of roselle (*Hibiscus sabdariffa* L.) extract". *Food Research International*. Vol. 35. pp. 351-356.

- Watt, G. 1972. *Dictionary of the economic products of India; periodical export*. Delhi India.
- Watt, J.M., Breyer-Bradndwijk, M.G., 1962. *The Medicinal and Poisonous Plants of Southern and Eastern Africa*, (2nd ed.) E & S Livingstone, Ltd., Edinburgh & London.
- Watson, J. A., Fang, M. & Lowenstein, J. M. 1969. "Tricarballoylate and hydroxycitrate: Substrate and inhibition of ATP:citrate oxaloacetatae lyase". *Arch. Biochem. Biophys.*, Vol. 135. pp. 209-217.
- Wells, B. G., Dipiro, J. T., Schwinghammer, T. L & Hamilton, C. W. 2003. *Pharmacotherapy Handbook*. McGraw-Hill, New York.
- Wilson, F. D. 1994. "The genome biogeography of *Hibiscus* L. sect. *Furcaria* D. C". *Genetic Resources and Crop Evolution*. Vol. 41. pp. 13-25.
- World Health Organisation. 2003. 18 March 2006. *Report: Controlling the global obesity epidemic*. <http://www.wh.int/nut/obs.html>.
- World Health Organization. 2000. "Obesity: Preventing and managing the global epidemic". *WHO Obesity Technical Report Series* No. 894. WHO; Geneva.
- Wong, W. H. 2006. *Kajian kandungan antosianin dan asid hidroksisitrik dalam kaliks roselle (*Hibiscus sabdariffa* L.)*. (Bachelor Thesis). Universiti Kebangsaan Malaysia.
- Yamada, T., Hida, H. & Yamada, Y. 2007. "Chemistry, physiological properties and microbial production of hydroxycitric acid". *Appl. Microbiol. Biotechnol.* Vol. 75. pp. 977-982.

APPENDICES

APPENDIX A: Statistical tables representing yield of extract based on both extraction methods

Extracts yield of 13 samples used in the study based on original extraction method

Samples	Yield (%)*			Average Yield (%)
	Rep I	Rep II	Rep III	
Accession 6	15.2	15.0	16.3	15.5±0.40
Accession 21	17.2	17.4	16.8	17.8±0.17
Accession 2	13.6	12.5	13.5	13.2±0.35
HS0275-30-4-4-1-1-1 (Red calyx)	14.7	13.9	15.2	14.6±0.38
HS0275-30-3-3-1-1-1 (White calyx)	13.6	12.6	12.8	13.0±0.31
Accession 3	11.3	10.8	12.4	11.5±0.47
HS03100-29-2-1-17-15-1 (Red calyx)	12.0	13.4	11.5	12.3±0.54
HS03100-29-7-1-6-3-1 (White calyx)	15.7	13.8	14.3	14.6±0.57
Accession 12	10.6	9.7	10	10.1±0.26
HS1250-18-18-1-1-1-1 (Red calyx)	11.7	10.7	11.5	11.3±0.31
HS1250-1-18-1-1-1-1 (White calyx)	13.3	12.6	13.7	13.2±0.32
Asam keping (<i>Garcinia atroviridis</i>)	20.2	19.8	18.5	19.5±0.51
<i>Garcinia cambogia</i>	19.9	22.1	20.1	20.7±0.70

* weight recorded g/100g dry calyces weight

ANOVA for extract yield (%) in 13 extracts from both extraction methods used in the study

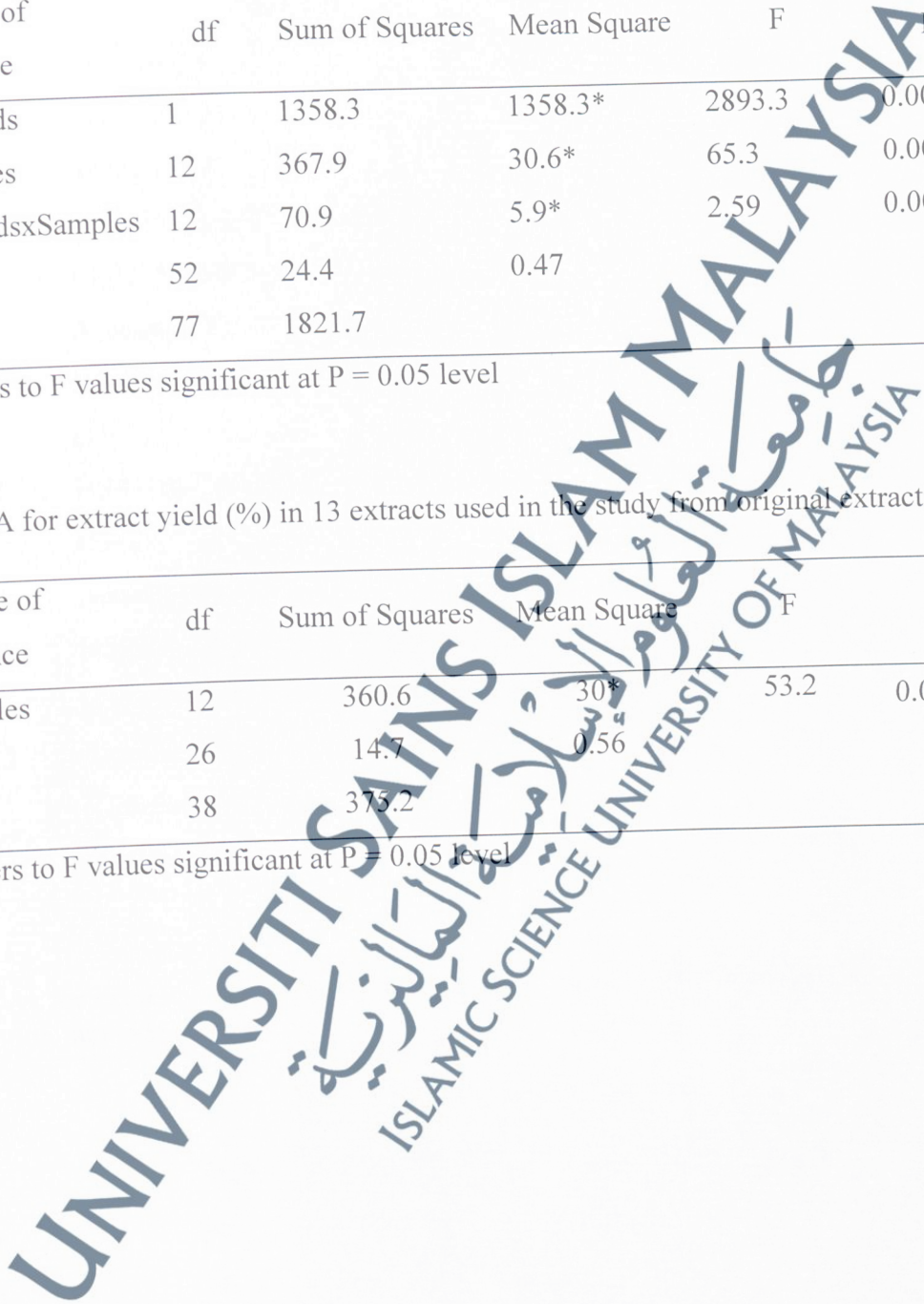
Source of variance	df	Sum of Squares	Mean Square	F	P
Methods	1	1358.3	1358.3*	2893.3	0.0001*
Samples	12	367.9	30.6*	65.3	0.0001*
MethodsxSamples	12	70.9	5.9*	2.59	0.0001*
Error	52	24.4	0.47		
Total	77	1821.7			

* refers to F values significant at P = 0.05 level

ANOVA for extract yield (%) in 13 extracts used in the study from original extraction methods

Source of variance	df	Sum of Squares	Mean Square	F	P
Samples	12	360.6	30*	53.2	0.0001*
Error	26	14.7	0.56		
Total	38	375.2			

* refers to F values significant at P = 0.05 level



Extracts yield based on modified extraction method using charcoal

No	Samples	Yield (%) *Average			
		Rep I	Rep II	Rep III	Yield (%)
1	Accession 6	4.9	6.5	5.1	5.5±0.50
2	Accession 21	5.9	6.3	5.8	6.0±0.15
3	Accession 2	5.8	5.5	5.9	5.4±0.12
4	HS0275-30-4-4-1-1-1 (Red calyx)	4.7	6.0	5.2	5.3±0.38
5	HS0275-30-3-3-1-1-1 (White calyx)	5.0	4.7	6.2	5.3±0.46
6	Accession 3	5.4	4.6	5.0	5.0±0.23
7	HS03100-29-2-1-17-15-1 (Red calyx)	4.7	5.2	6.6	5.5±0.57
8	HS03100-29-7-1-6-3-1 (White calyx)	6.1	5.5	6.4	6.0±0.26
9	Accession 12	4.8	4.9	5.3	5.0±0.15
10	HS1250-18-18-1-1-1-1 (Red calyx)	4.9	5.2	4.9	5.0±0.10
11	HS1250-1-18-1-1-1-1 (White calyx)	4.8	5.3	6.4	5.5±0.47
12	Asam keping (<i>Garcinia atroviridis</i>)	8.7	7.4	8.8	8.3±0.45
13	<i>Garcinia cambogia</i>	9.6	9.9	10.5	10±0.26

ANOVA for extract yield (%) in 13 extracts used in the study from modified extraction methods

Source of variance	df	Sum of Squares	Mean Square	F	P
Samples	12	78.2	6.5*	17.4	0.0001
Error	26	9.7	0.537		
Total	38	87.9			

* refers to F values significant at P = 0.05 level

Mean of methods used for extract yield (%) in the study

Methods	Mean*
Original	14.3 ^a
Modified	6 ^b

* The same alphabet connotes no significant differences

ANOVA for potassium hydroxycitrate concentrations in 13 extracts from both extraction methods used in the study

Source of variance	df	Sum of Squares	Mean Square	F	P
Methods	1	9555	9555*	43840.4	0.0001*
Samples	12	29443.5	2453.6*	11257.8	0.0001*
MethodsxSamples	12	6519.1	543.3*	2492.6	0.0001*
Error	52	11.3	0.2		
Total	77	45528.8			

* refers to F values significant at P = 0.05 level

ANOVA for potassium hydroxycitrate concentrations in 13 extracts used in the study from original extraction methods

Source of variance	df	Sum of Squares	Mean Square	F	P
Samples	12	19642.1	1636.8*	99999.9	0.0001*
Error	26	0.09	0.003		
Total	38	19642.2			

* refers to F values significant at P = 0.05 level

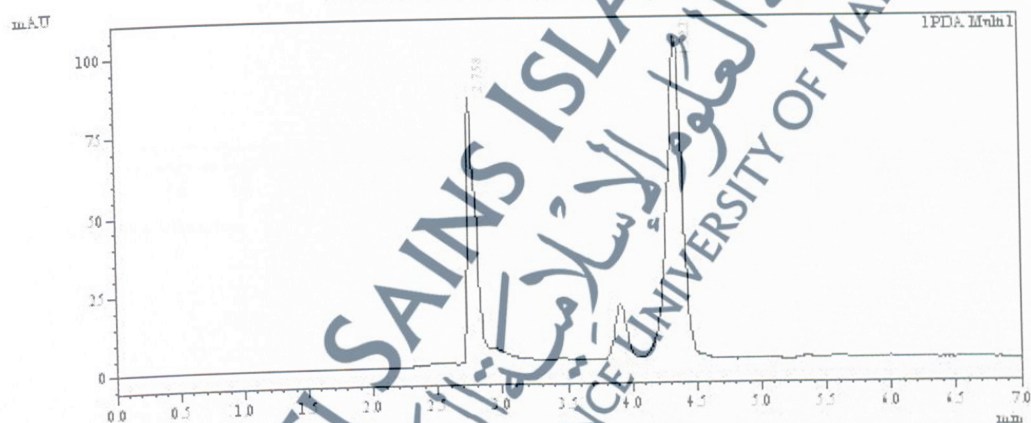
APPENDIX B: Full chromatograms of samples used in the study

INSTITUT SAINS BIOLOGI
FAKULTI SAINS
UNIVERSITI MALAYA

Sample Information

Acquired by: Admin
 Sample Name: 150
 Sample ID: Kacolla (Acc #)
 Vial#:
 Injection Volume: 20 µL
 Data Filename: 011205 Test0435 Ed
 Method Filename: HPLC.Majeed.laksmatankum
 Batch Filename:
 Report Filename:
 Date Acquired: 10/22/2009 8:35:38 AM
 Data Processed: 10/22/2009 8:48:40 AM

Chromatogram
 150 C:\Lab\Software\Data\Project\011205 Test0435 Ed



1 PDA.Muln1 / 210nm 4mm

PeakTable

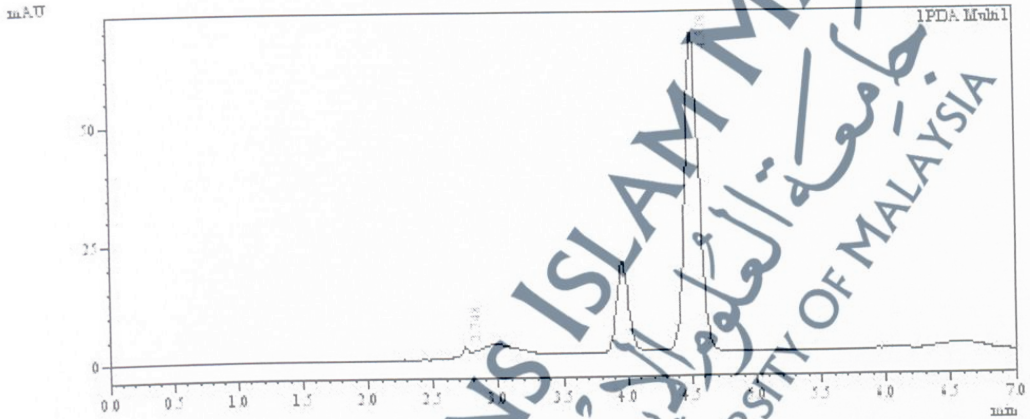
Peak#	Ret Time	Area	Height	Area%	Height%
1	1.894	1094	93	0.044	0.043
2	2.425	1593	1039	0.064	0.484
3	2.748	7798	84884	31.033	39.559
4	3.448	3788	589	0.231	0.274
5	3.703	1433	305	0.058	0.142
6	3.909	127090	18045	7.744	8.419
7	4.522	896077	102770	54.879	47.881
8	5.014	14420	834	0.581	0.390
9	5.338	11013	1145	0.473	0.543
10	5.587	14232	1144	0.570	0.534
11	5.991	9560	781	0.381	0.344
12	6.211	3792	384	0.232	0.179
13	7.888	14517	1440	1.009	0.471
14	8.534	2445	154	0.151	0.072
15	9.071	2409	232	0.147	0.108
16	9.324	3934	283	0.240	0.132
17	9.907	2044	408	0.184	0.190
Total		1434442	214574	100.000	100.000

INSTITUT SAINS BIOLOGI
FAKULTI SAINS
UNIVERSITI MALAYA

Sample Information

Acquired by : Adnan
Sample Name : r52
Sample ID : Kasele (Acc 21)
Vial# :
Injection Volume : 20 µL
Data Filename : 011205 Test0438.txt
Method Filename : HPLC Majeed lab.mst
Batch Filename :
Export Filename :
Date Acquired : 10/22/2009 9:13:38 AM
Date Processed : 10/22/2009 9:22:43 AM

Chromatogram
C:\Lab\lab\bin\Dat\Project\011205 Test0438.txt



1 PDA.Mulh1 / 210nm 4mm

PeakTable

PDA.Chl 210nm 4mm

Peak#	Ret. Time	Area	Height	Area %	Height %
1	2.272	1047	89	0.104	0.024
2	2.743	14003	2411	1.438	2.525
3	2.943	74357	3140	7.437	3.037
4	3.359	4742	1055	0.444	1.021
5	3.497	9488	953	0.995	0.921
6	3.743	7464	1021	0.748	1.017
7	3.954	134714	19921	14.812	19.274
8	4.538	421087	48720	44.817	44.418
9	5.221	2035	221	0.209	0.214
10	5.345	1313	194	0.125	0.189
11	5.613	4443	437	0.434	0.433
12	5.909	3959	489	0.407	0.473
13	6.054	10244	874	1.012	0.947
14	6.552	41887	1581	4.302	1.529
15	7.354	1002	109	0.103	0.105
16	7.714	1479	138	0.152	0.133
17	7.841	1343	172	0.138	0.144
18	8.051	8044	425	0.838	0.405
19	8.894	1968	337	0.204	0.324
20	8.970	3958	370	0.407	0.358
21	9.214	1954	171	0.201	0.145
22	9.520	1470	132	0.151	0.138

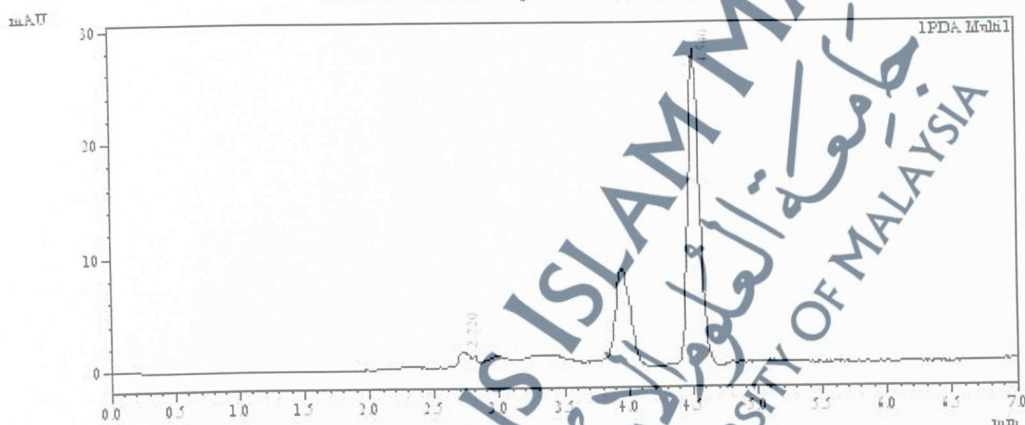
INSTITUT SAINS BIOLOGI
FAKULTI SAINS
UNIVERSITI MALAYA

Sample Information

Acquired by : Aliman
 Sample Name : #125
 Sample ID : Escelle (Asc. 11)
 Vial# :
 Injection Volume : 20 µL
 Data Filename : 011205 Test0409.kd
 Method Filename : HPLC.Majed.lahmat@um.edu.my
 Batch Filename :
 Report Filename :
 Date Acquired : 10/22/2009 9:23:04 AM
 Data Processed : 10/22/2009 9:33:03 AM

Chromatogram

011205.C\LabData\Inov\Dat\Project\011205 Test0409.kd



1 PDA.Mulh1 / 210nm +2mm

PeakTable

PDA.C11 210nm +2mm

Peak#	Ret. Time	Area	Height	Area %	Height %
1	1.351	1.272	101	0.350	0.225
2	2.285	2107	295	0.714	0.458
3	2.338	1357	234	0.373	0.421
4	2.730	14950	1504	4.111	3.352
5	2.824	14175	1048	4.019	2.334
6	3.234	8007	1042	2.291	2.348
7	3.342	17948	1150	4.937	2.545
8	3.944	21454	9118	22.354	20.329
9	4.540	195175	28454	53.433	43.888
10	5.093	4329	242	1.190	0.541
11	4.837	1411	142	0.388	0.314
12	7.024	1741	229	0.478	0.510
13	7.359	7113	314	1.824	0.705
14	7.878	8254	474	2.248	1.057
15	8.248	1561	157	0.429	0.351
16	8.484	1743	125	0.479	0.279
Total		343911	44853	100.000	100.000

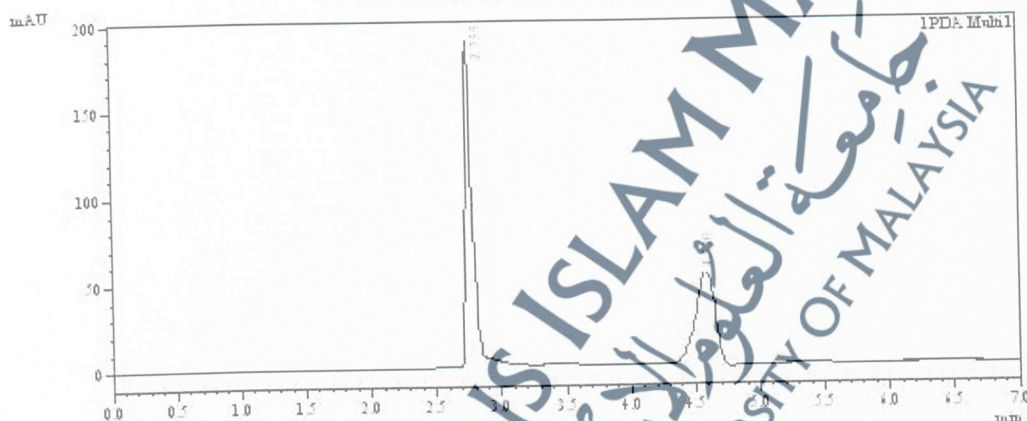
INSTITUT SAINS BIOLOGI
FAKULTI SAINS
UNIVERSITI MALAYA

Sample Information

Acquired by: Adam
Sample Name: r44
Sample ID: Esre16 (Acc.2)
Vial#:
Injection Volume: 20 µL
Data Filename: 011205 Test007.kd
Method Filename: HPLC.Majed.lahmat@umk.m
Batch Filename:
Export Filename:
Date Acquired: 10/01/2009 11:54:30 PM
Date Processed: 10/02/2009 12:04:34 AM

Chromatogram

r44 C:\Lab\Software\Data Project\011205 Test007.kd



1 PDA.Mulh1 / 210nm.tsm

PeakTable

PDA.Ch1 210nm.tsm

Peak#	Ret. Time	Area	Height	Area%	Height%
1	1.249	1063	92	0.058	0.032
2	1.595	1463	143	0.090	0.054
3	2.274	18275	1447	0.981	0.504
4	2.735	89495	18943	43.188	45.334
5	3.462	10948	2850	3.179	0.983
6	3.878	83494	24481	10.113	9.202
7	4.530	54197	54813	34.024	19.584
8	4.751	11838	1994	0.435	0.488
9	4.913	59945	2681	3.017	0.991
10	5.244	9033	981	0.484	0.340
11	5.451	8542	417	0.459	0.213
12	6.174	1784	48	0.094	0.023
13	6.515	2041	200	0.111	0.049
14	7.543	1149	140	0.042	0.055
15	7.947	8048	574	0.949	0.543
16	8.192	1441	170	0.088	0.059
17	8.992	1342	39	0.047	0.048
18	9.275	9701	778	0.120	0.248
19	9.788	10574	2880	1.454	0.993
Total		1843854	289912	100.000	100.000

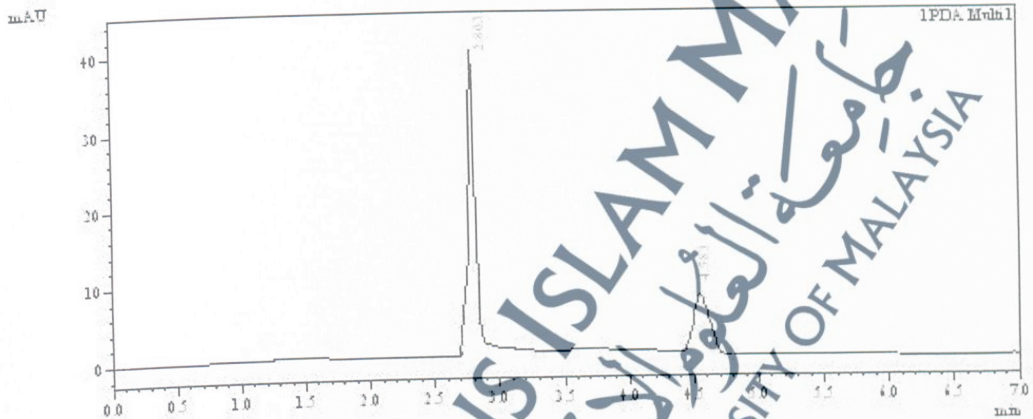
INSTITUT SAINS BIOLOGI
 FAKULTI SAINS
 UNIVERSITI MALAYA

Sample Information

Acquired by Admin
 Sample Name s14S
 Sample ID K0016 (Acc 2)
 Vial#
 Injection Volume 20 uL
 Data Filename 011201 Test0447.kd
 Method Filename HCA.Majed.lahmatulkm
 Batch Filename
 Report Filename
 Date Acquired 10/22/2009 11:27:19 AM
 Data Processed 10/22/2009 11:27:22 AM

Chromatogram

s14S C:\Lab\Instrum\Dat\Project\011201 Test0447.kd



1 PDA.Mnlh1 / 210nm x1m.

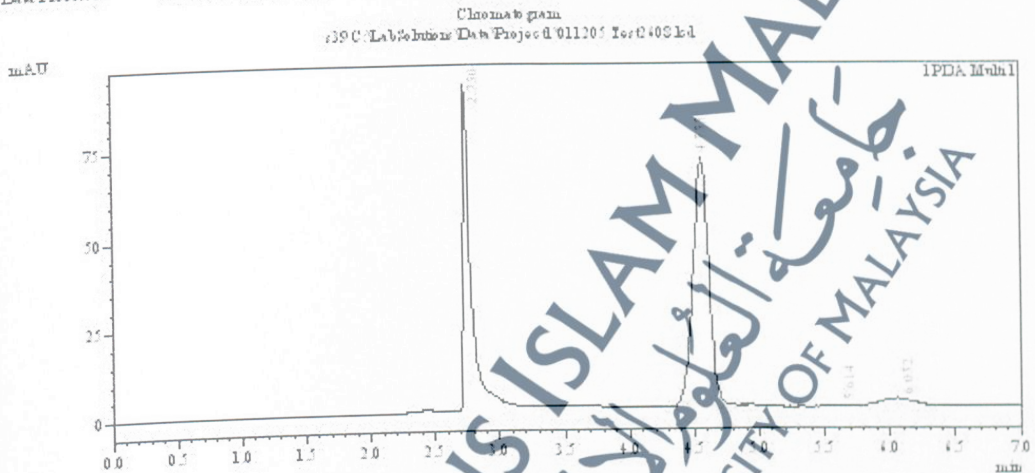
PeakTable

Peak#	Ret. Time	Area	Height	Area %	Height %
1	0.243	1332	125	0.19%	0.12%
2	0.244	1332	21%	0.21%	0.21%
3	0.222	1054	441	1.71%	0.42%
4	1.480	7495	1495	7.49%	1.44%
5	2.705	34474	7546	5.49%	7.22%
6	2.803	44025	39734	24.51%	38.94%
7	3.754	8374	2333	44.40%	41.50%
8	4.383	79132	8096	12.41%	7.94%
9	5.414	1014	129	0.14%	0.12%
10	6.025	1255	173	0.20%	0.17%
11	6.470	147	84	1.42%	0.87%
12	6.435	4322	512	0.48%	0.50%
13	7.302	2807	245	0.44%	0.24%
Total		427547	101864	100.00%	100.00%

INSTITUT SAINS BIOLOGI
FAKULTI SAINS
UNIVERSITI MALAYA

Sample Information

Acquired by : Aham
 Sample Name : 239
 Sample ID : Esselle (Munas Acc. 2-Esd)
 Vial# :
 Injection Volume : 20 µL
 Data Filename : 011205 Test0403.Etd
 Method Filename : HPLC_Majeed_halmawati.m
 Batch Filename :
 Report Filename :
 Date Acquired : 10/02/2009 12:07:08 AM
 Data Processed : 10/02/2009 12:17:12 AM



1 PDA.Muh1 / 210nm 4mm

PeakTable

Peak#	Ret. Time	Area	Height	Area %	Height %
1	1.502	1447	107	0.100	0.054
2	2.492	13331	339	0.949	0.437
3	2.770	432103	92043	29.892	47.709
4	3.022	130	144	0.093	0.054
5	3.920	441	319	0.314	0.147
6	4.052	40189	73321	44.078	37.478
7	4.14	3440	284	0.187	0.148
8	4.052	33383	2203	3.072	1.144
9	7.564	1090	149	0.077	0.053
10	7.948	18171	1489	1.287	0.772
11	8.419	144878	7701	10.258	4.009
12	9.538	108319	13247	7.471	7.912
Total		1412063	182947	100.000	100.000

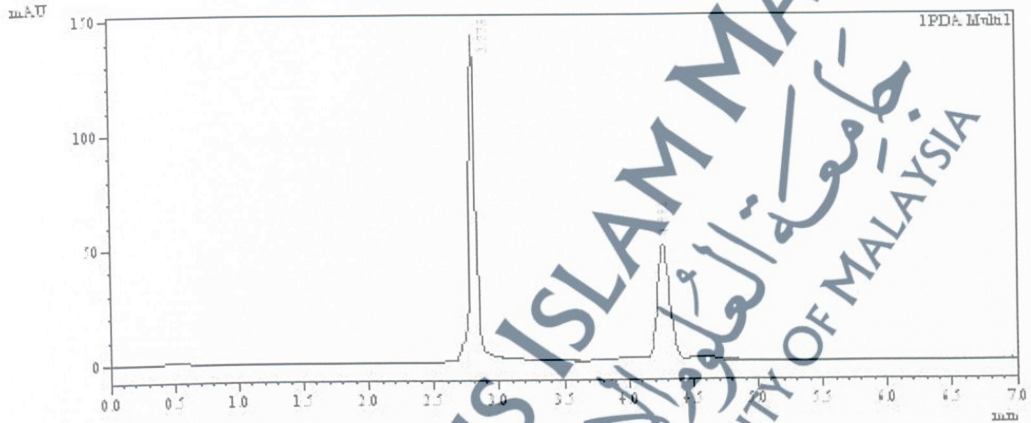
INSTITUT SAINS BIOLOGI
FAKULTI SAINS
UNIVERSITI MALAYA

Sample Information

Acquired by: Adnan
Sample Name: r149
Sample ID:
Vial#: 1
Injection Volume: 20 µL
Data Filename: 011205 Test0448 Ed
Method Filename: HPLC.Majed.lahmat@umk.m
Batch Filename:
Report Filename:
Date Acquired: 10/20/2009 3:14:47 PM
Date Processed: 10/20/2009 3:24:51 PM

Chromatogram

r149 C:\LabData\MSD\MSD Data\Project 011205 Test0448 Ed



1 PDA.Mulh1 / 210nm x2mm

PeakTable

PDA.Ch1 210nm x2mm

Peak#	Ret Time	Area	Height	Area%	Height%
1	0.498	8424	213	0.284	0.240
2	2.777	143414	143414	34.820	71.247
3	4.551	342933	11072	38.774	25.728
4	4.800	14184	1018	1.705	0.513
5	4.849	1573	124	0.144	0.042
6	4.844	2824	227	0.309	0.114
7	4.715	422	427	0.470	0.215
8	4.996	170	179	0.440	0.292
9	7.627	1718	135	0.140	0.048
10	8.079	13954	559	1.470	0.282
11	8.848	2448	215	0.240	0.109
12	9.474	3128	221	0.330	0.111
Total		949245	188108	100.000	100.000

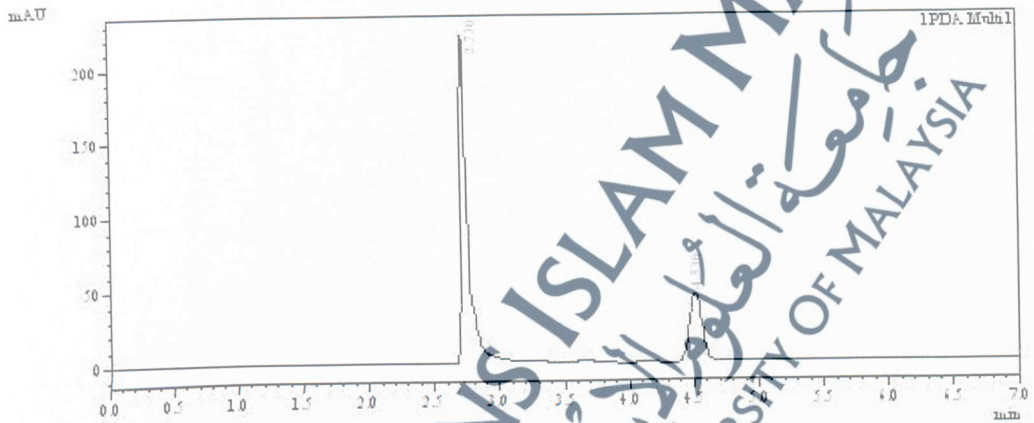
INSTITUT SAINS BIOLOGI
FAKULTI SAINS
UNIVERSITI MALAYA

Sample Information

Assigned by : Adnan
 Sample Name : #42
 Sample ID : Esselle (Mundan Acc. 2-White)
 Vial# :
 Injection Volume : 20 µL
 Data Filename : 011205 Test0402 Ed
 Method Filename : HPLC.Majed.halimat@um.edu.my
 Batch Filename :
 Report Filename :
 Date Acquired : 10/21/2009 10:59:50 PM
 Data Processed : 10/21/2009 11:09:54 PM

Chromatogram

#42 C:\Lab\Inhouse Data\Project\011205 Test0402 Ed



1 PDA.Mulh1 / 210nm 4mm

PeakTable

PDA.CH1 210nm 4mm

Peak#	RetTime	Area	Height	Area%	Height%
1	2.739	221650	221650	41.379	75.707
2	3.794	180	180	0.174	0.041
3	4.217	42274	3780	4.257	1.399
4	4.330	93433	48229	22.855	14.454
5	4.744	514	552	0.343	0.188
6	7.400	147	147	0.078	0.010
7	7.744	113	113	0.127	0.038
8	8.479	494	494	0.498	0.237
9	9.143	121	121	0.110	0.041
10	9.595	247	247	0.208	0.084
11	9.740	17122	17122	9.750	5.842
Total		1443317	290050	100.000	100.000

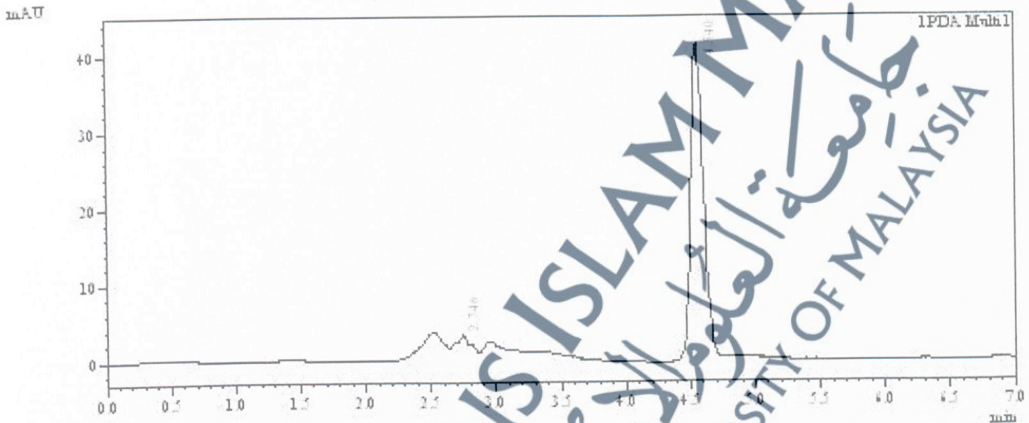
INSTITUT SAINS BIOLOGI
FAKULTI SAINS
UNIVERSITI MALAYA

Sample Information

Acquired by : Admin
Sample Name : 0118
Sample ID : Kevells (Mubant Acc. 2- Wink)
Vial# :
Injection Volume : 20 µL
Data Filename : 011205 Test0413.kd
Method Filename : HPLC_Majeed_hadmaton.km
Batch Filename :
Report Filename :
Date Acquired : 10/03/2009 10:25 AM
Date Processed : 10/03/2009 10:28 AM

Chromatogram

HPLC Lab\LabData\Data\Project\011205 Test0413.kd



1 PDA.Mvnl1 / 210nm + 2nm

PeakTable

PDA.Chl 210nm + 2nm

Peak#	Retention Time	Area	Height	Area %	Height %
1	0.341	1990	240	0.322	0.394
2	0.451	1818	302	0.352	0.499
3	0.571	2184	252	0.404	0.415
4	1.449	3388	248	0.425	0.409
5	2.611	4765	3791	0.783	4.253
6	2.749	3688	3470	0.417	5.723
7	2.949	31002	2497	4.189	4.116
8	3.307	11475	1234	3.955	2.038
9	4.340	613592	42459	57.758	70.354
10	4.800	47814	4537	12.709	7.482
11	4.780	4949	347	0.912	0.404
12	4.955	1233	122	0.227	0.201
13	4.880	4007	420	0.728	0.482
14	7.424	2324	217	0.428	0.358
15	7.859	4228	277	1.149	0.457
Total		542937	40434	100.000	100.000

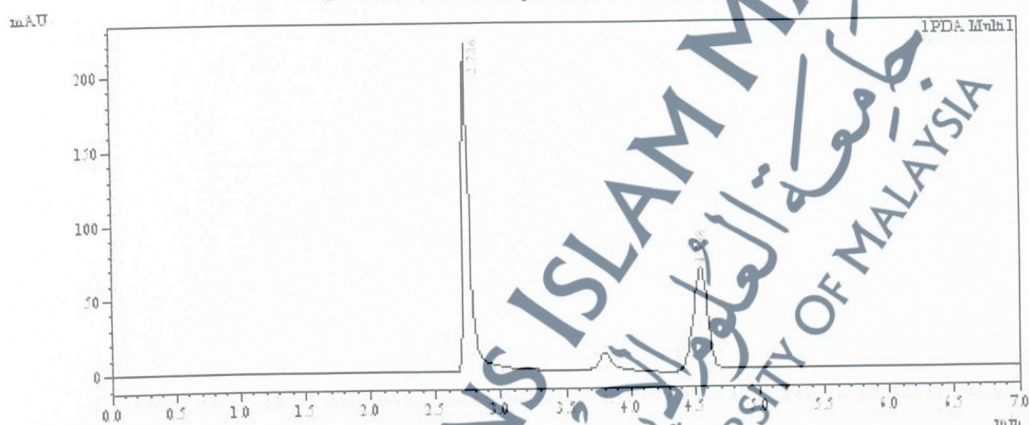
INSTITUT SAINS BIOLOGI
FAKULTI SAINS
UNIVERSITI MALAYA

Sample Information

Assigned by : Admin
Sample Name : 1110
Sample ID : Escell (Acc 3)
Vial# :
Injection Volume : 20 µL
Data Filename : 011205 Test04 Ed
Method Filename : HCA.Majeed.halman@um.edu.my
Batch Filename :
Export Filename :
Data Acquired : 10/21/2009 11:33:23 PM
Data Processed : 10/21/2009 11:33:27 PM

Chromatogram

1110 C:\LabSolutions\Data\Project\011205 Test04 Ed



1 PDA.Mvnl1 / 210nm 4nm

PeakTable

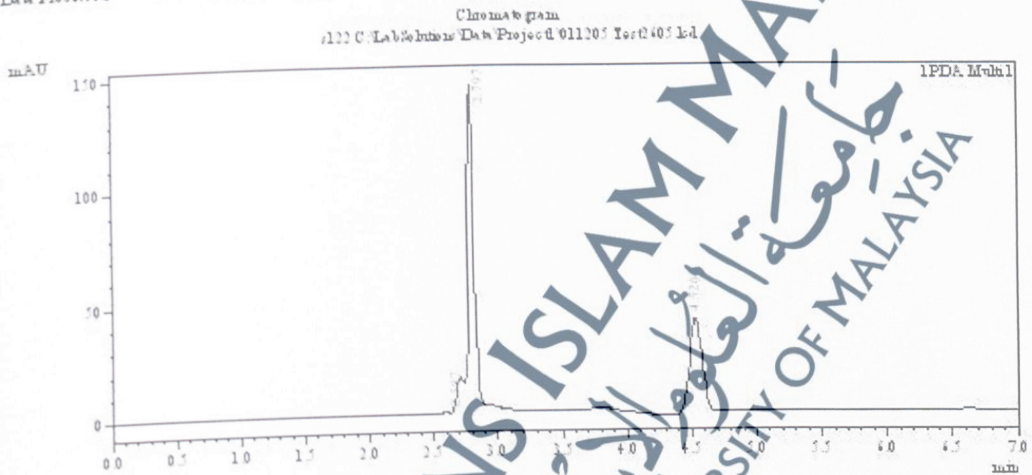
PDA.Ch1 210nm 4nm

Peak#	Ret. Time	Area	Height	Area %	Height %
1	0.288	1005	70	0.043	0.023
2	1.013	1119	72	0.070	0.024
3	2.268	3798	482	0.318	0.197
4	2.776	4312	711	0.394	0.232
5	3.771	87977	220741	54.807	72.127
6	3.797	4416	10794	4.121	3.523
7	4.338	103908	49619	37.485	22.811
8	5.189	2896	337	0.131	0.109
9	4.897	1774	157	0.111	0.091
10	7.433	5944	383	0.372	0.125
11	8.513	1092	192	0.048	0.043
12	8.771	34183	1981	1.708	0.447
13	9.315	5843	325	0.344	0.104
Total		1604133	304071	100.000	100.000

INSTITUT SAINS BIOLOGI
FAKULTI SAINS
UNIVERSITI MALAYA

Sample Information

Acquired by: Adam
Sample Name: r122
Sample ID: E0016 (Acc 3)
Vial#:
Injection Volume: 20 µL
Data Filename: 011205 Test0405.kd
Method Filename: HCA.Majed labmu@um.edu.my
Batch Filename:
Report Filename:
Date Acquired: 10/21/2009 11:34:22 PM
Date Processed: 10/21/2009 11:44:24 PM



1 PDA.Multi1 / 210nm +sm

PeakTable

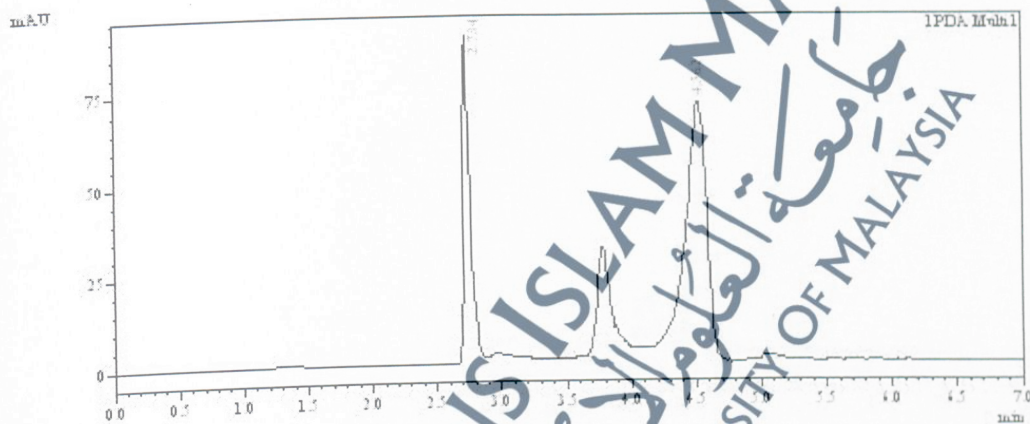
Peak#	Retention Time	Area	Height	Area %	Height %
1	0.361	189	174	0.237	0.087
2	1.290	5722	575	0.914	0.288
3	2.837	304	541	0.320	0.421
4	2.897	54370	14480	57.123	72.584
5	3.103	310	43028	32.594	21.555
6	4.250	351	300	0.454	0.150
7	4.443	1511	132	0.138	0.044
8	4.750	2003	229	0.210	0.115
9	5.029	1523	132	0.140	0.044
10	5.527	1144	127	0.120	0.044
11	5.904	2053	211	0.219	0.104
12	6.057	3284	248	0.345	0.124
13	6.348	2720	195	0.284	0.098
14	6.412	7780	502	0.818	0.402
15	7.398	32808	3454	3.447	1.831
16	9.218	21954	2788	2.304	1.502
17	9.453	1311	132	0.138	0.044
Total		51900	19948	100.000	100.000

INSTITUT SAINS BIOLOGI
FAKULTI SAINS
UNIVERSITI MALAYA

Sample Information

Acquired by : Admin
 Sample Name : 0112
 Sample ID : Essc16 (Mfrsrd Acc 3-End)
 Vial# :
 Injection Volume : 20 uL
 Data Filename : 011205 Iser0404.Ld
 Method Filename : HPLC.Majed.lahmat@um.edu.my
 Batch Filename :
 Report Filename :
 Date Acquired : 10/21/2009 11:45:51 PM
 Data Processed : 10/21/2009 11:55:54 PM

Chromatogram
 0112 C:\Lab\Software\Data\Project\011205 Iser0404.Ld



1 PDA.Mfrh1 / 210nm +1nm

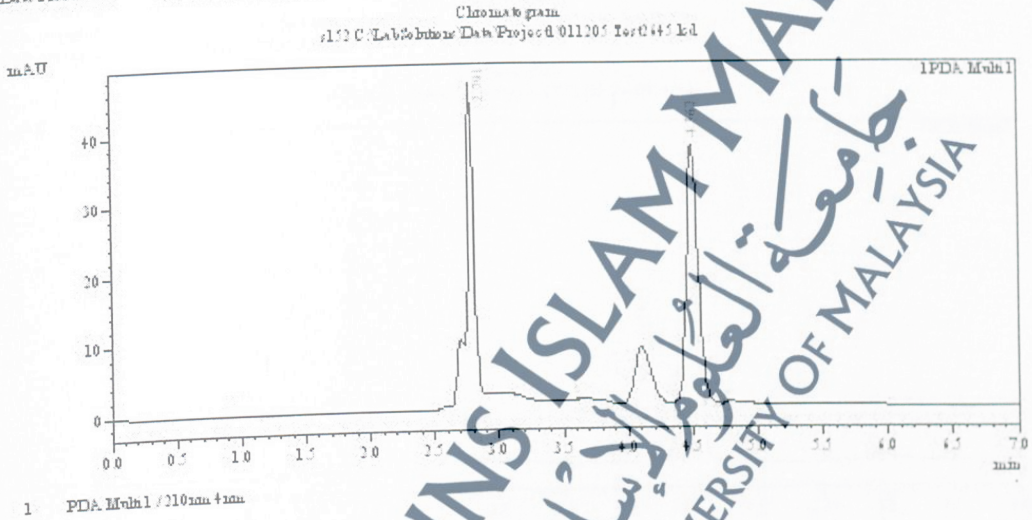
PeakTable

Peak#	Ret. Time	Area	Height	Area %	Height %
1	1.387	14385	924	0.982	0.445
2	2.287	9149	44	0.071	0.021
3	2.754	34793	90272	21.387	43.507
4	2.859	5420	2318	3.333	1.358
5	3.451	954	1301	0.588	0.427
6	3.677	3393	31432	14.444	15.148
7	4.127	1361	1309	1.034	0.431
8	4.542	32040	72049	22.348	34.733
9	5.050	20314	1453	1.279	0.297
10	5.515	1044	129	0.044	0.043
11	5.704	1504	228	0.093	0.110
12	7.440	19654	1790	1.322	0.543
13	8.027	1749	191	0.109	0.092
14	8.407	24221	1431	1.489	0.784
15	8.747	21401	1524	1.328	0.734
16	9.533	1434	159	0.095	0.077
Total		1437013	207498	100.000	100.000

INSTITUT SAINS BIOLOGI
FAKULTI SAINS
UNIVERSITI MALAYA

Sample Information

Acquired by : Admin
 Sample Name : e152
 Sample ID : Ezeelle (Mivanat Acc. 3-Ead)
 Vial#:
 Injection Volume : 20 uL
 Data Filename : 011205 Test0445.kd
 Method Filename : HCA_Majeed_halmatou.km
 Batch Filename :
 Export Filename :
 Date Acquired : 10/22/2009 10:57:07 AM
 Data Processed : 10/22/2009 11:07:31 AM



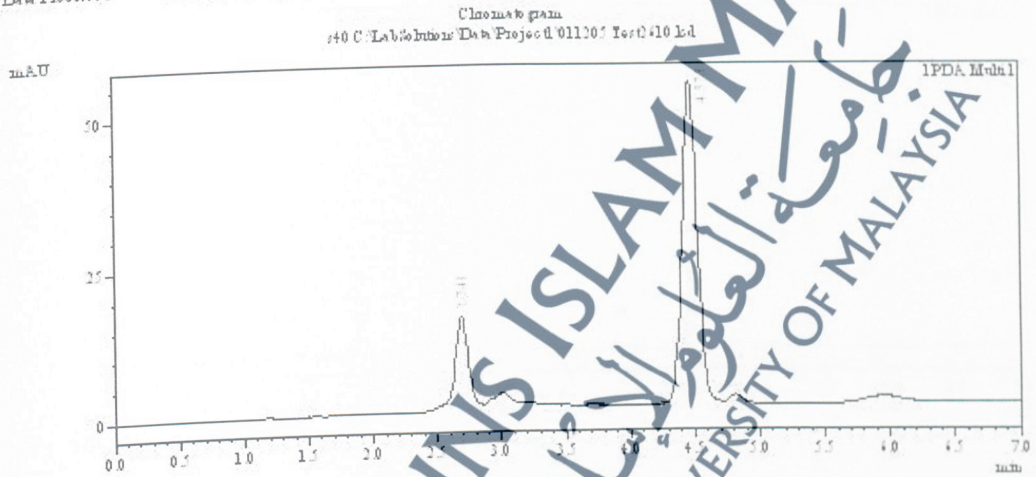
PeakTable

Peak#	Ret. Time	Area	Height	Area %	Height %
1	0.754	2434	197	0.545	0.197
2	1.054	20748	1542	3.414	1.517
3	1.890	14382	949	2.440	0.944
4	2.781	201462	4494.7	30.282	44.783
5	3.022	20436	2228	7.401	2.221
6	4.062	49387	8494	13.824	8.445
7	4.542	244074	38489	39.449	38.555
8	4.709	1202	145	0.180	0.145
9	5.041	1204	114	0.181	0.114
10	4.542	11750	774	1.744	0.774
11	9.015	1914	175	0.287	0.174
Total		445982	100350	100.000	100.000

INSTITUT SAINS BIOLOGI
FAKULTI SAINS
UNIVERSITI MALAYA

Sample Information

Acquired by : Admin
Sample Name : r40
Sample ID : Eselle (Mrbat Acc. 3-White)
Vial#:
Injection Volume : 20 uL
Data File Name : 011205 Test010.kd
Method File Name : HCA_Majeed_labmethod.m
Batch File Name :
Export File Name :
Data Acquired : 10/22/2009 12:29:29 AM
Data Processed : 10/22/2009 12:39:34 AM



1 PDA.Mrbat1 / 210nm 4mm

PeakTable

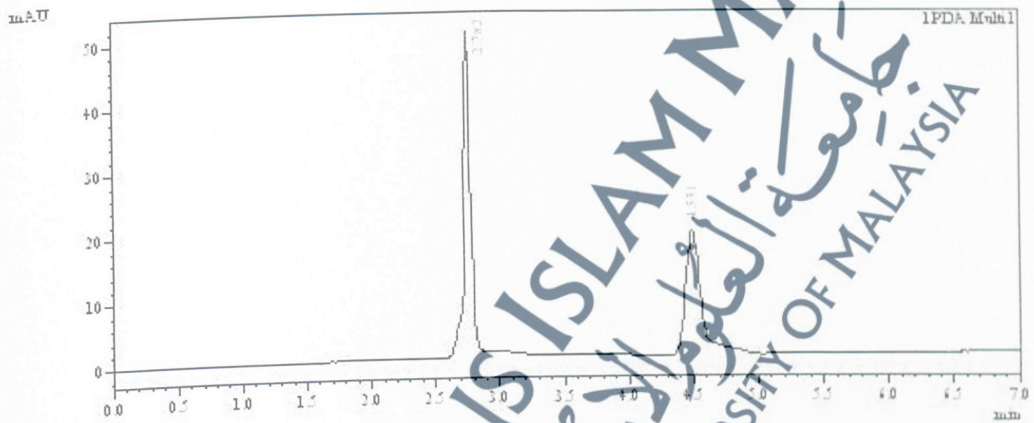
Peak#	Ret. Time	Area	Height	Area%	Height%
1	2.711	6487	944	1.32%	1.14%
2	2.741	107003	15245	14.92%	18.68%
3	3.005	39224	3031	5.47%	3.59%
4	3.213	10341	1300	1.51%	1.54%
5	3.340	749	503	0.78%	0.91%
6	3.458	6390	729	0.73%	0.84%
7	3.711	8954	502	1.11%	0.95%
8	3.921	9950	1565	1.38%	1.87%
9	4.373	443340	53917	42.12%	43.92%
10	4.810	14731	1779	2.33%	2.10%
11	5.127	4433	318	0.41%	0.37%
12	5.334	3344	275	0.47%	0.32%
13	5.957	31455	1324	4.39%	1.57%
14	6.357	1838	315	0.25%	0.37%
15	6.517	3172	394	0.44%	0.44%
16	6.544	3094	404	0.43%	0.47%
17	6.837	3054	373	0.43%	0.34%
18	8.103	7902	744	1.10%	0.90%
19	9.813	1017	121	0.14%	0.14%
Total		716845	34407	100.00%	100.00%

INSTITUT SAINS BIOLOGI
FAKULTI SAINS
UNIVERSITI MALAYA

Sample Information

Acquired by : Admin
 Sample Name : 0120
 Sample ID : Escelle (Infusent Acc. 3-White)
 Vial#:
 Injection Volume : 20 uL
 Data Filename : 011205 Test0411.kd
 Method Filename : HPLC_Majeed_hadma.tsm
 Batch Filename :
 Export Filename :
 Date Acquired : 10/22/2009 12:40:10 AM
 Data Processed : 10/22/2009 12:40:12 AM

Chromatogram
 HPLC/LabSolution Data Project 011205 Test0411.kd



1. PDA.Mvnl1 / 210nm 4nm

PeakTable

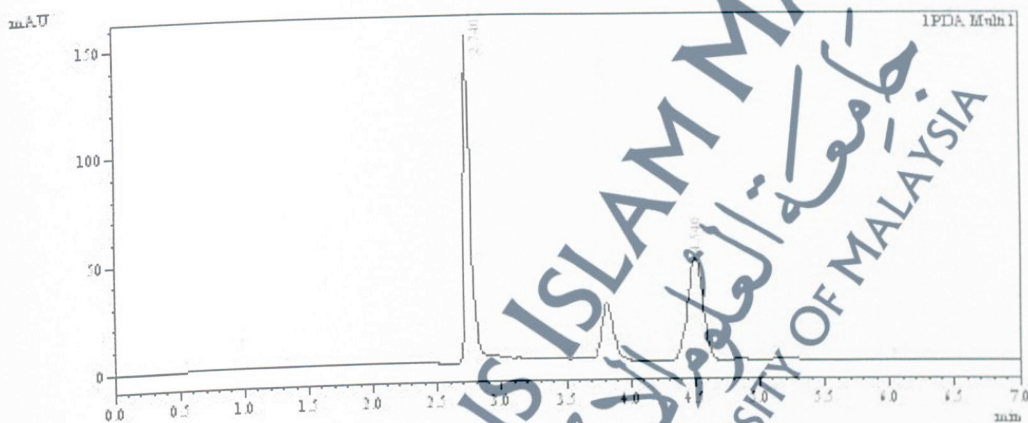
Peak#	Ret. Time	Area	Height	Area %	Height %
1	1.534	1215	91	0.317	0.128
2	1.771	1514	154	0.357	0.214
3	1.991	1930	134	0.502	0.174
4	2.782	19092	10439	51.141	71.241
5	4.521	177104	19170	45.794	27.532
6	4.927	7215	504	1.887	0.709
Total		382314	71032	100.000	100.000

INSTITUT SAINS BIOLOGI
FAKULTI SAINS
UNIVERSITI MALAYA

Sample Information

Acquired by: Admin
 Sample Name: rsl
 Sample ID: Esselle (Ass 12)
 Vial#:
 Injection Volume: 20 µL
 Data Filename: 011205 Test0414.kd
 Method Filename: HCA.Majed.lahmat@unim.
 Batch Filename:
 Report Filename:
 Date Acquired: 10/22/2009 11:24 AM
 Data Processed: 10/22/2009 1:23:29 AM

Chromatogram
 rsl C:\LabSolutions\Data\Project\011205 Test0414.kd



1 PDA.Meth1 / 210nm.tsm

PeakTable

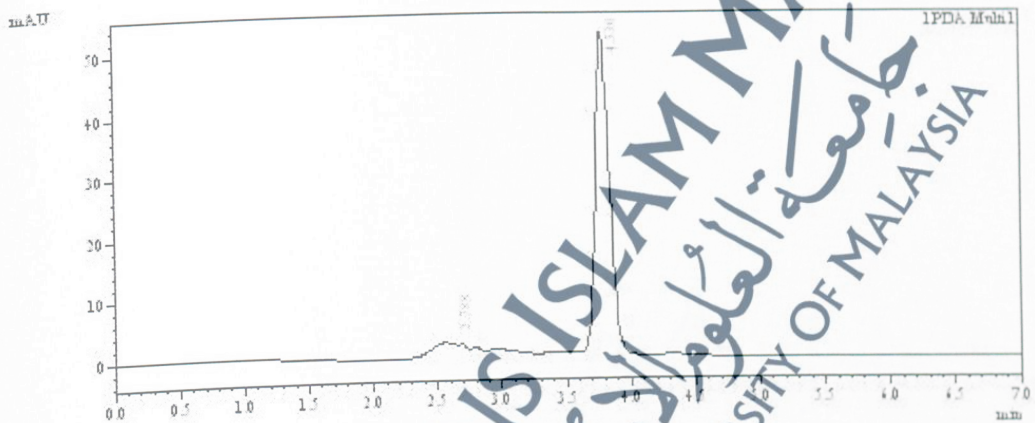
Peak#	Ret. Time	Area	Height	Area%	Height%
1	0.577	14470	119	1.249	0.241
2	1.260	1075	114	0.099	0.049
3	2.248	8082	557	0.404	0.225
4	2.740	33097	152293	47.471	44.545
5	3.415	7444	540	0.198	0.234
6	3.814	174830	24833	13.249	11.302
7	4.440	41923	48789	31.413	20.554
8	4.860	5041	1104	0.401	0.445
9	4.888	1193	144	0.059	0.049
10	5.187	3887	547	0.591	0.230
11	5.928	1439	210	0.108	0.088
12	6.247	3884	370	0.291	0.154
13	7.544	3348	559	0.401	0.235
14	7.714	8194	522	0.414	0.220
15	8.444	9410	833	0.705	0.351
16	8.901	2441	328	0.199	0.138
17	9.308	20083	1444	1.505	0.492
18	9.877	5704	343	0.412	0.153
Total		1334494	237422	100.000	100.000

INSTITUT SAINS BIOLOGI
FAKULTI SAINS
UNIVERSITI MALAYA

Sample Information

Acquired by: Admin
 Sample Name: r120
 Sample ID: E0016 (Acc. 12)
 Vial#:
 Injection Volume: 20 µL
 Data Filename: 011205 Test0415.Ltd
 Method Filename: HPLC.Majeed lab.malaya.um.km
 Batch Filename:
 Report Filename:
 Date Acquired: 10/22/2009 1:24:01 AM
 Data Processed: 10/22/2009 1:34:03 AM

Chromatogram
 r120 C:\Lab\LabData\Proj\011205 Test0415.Ltd



1 IPDA.Mutuh1 / 210mm x 4mm

PeakTable

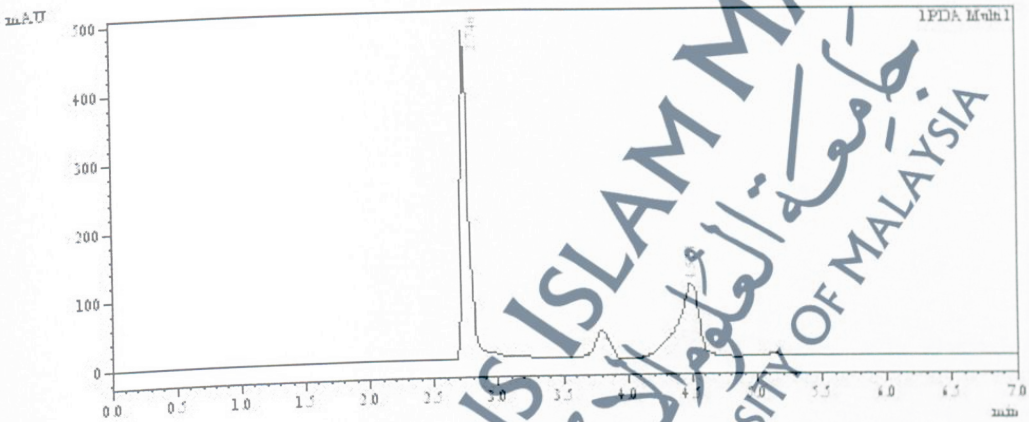
Peak#	Retention Time	Area	Height	Area %	Height %
1	1.492	6943	597	1.727	0.913
2	2.272	37487	2479	4.477	4.048
3	2.788	13114	2508	2.395	3.838
4	2.788	10733	1874	1.924	2.848
5	3.499	37782	1596	4.413	2.447
6	3.497	12154	794	2.407	1.318
7	4.530	417018	52284	74.132	81.542
8	5.459	2186	291	0.461	0.444
9	5.749	8487	517	1.549	0.788
10	6.102	2379	243	0.424	0.373
11	6.219	1499	224	0.274	0.343
12	6.753	3743	379	0.447	0.579
13	7.714	2944	174	0.537	0.249
14	8.534	1053	84	0.192	0.132
15	9.249	1593	117	0.291	0.179
Total		547828	45357	100.000	100.000

INSTITUT SAINS BIOLOGI
FAKULTI SAINS
UNIVERSITI MALAYA

Sample Information

Acquired by : Admin
Sample Name : 053
Sample ID : Escelle (Muband Acc 12-Esd)
Vial# :
Injection Volume : 20 uL
Data Filename : 011205 Esc0414.kd
Method Filename : HCA.Majed.lahmat@um.edu.my
Batch Filename :
Export Filename :
Date Acquired : 10/22/2009 1:37:31 AM
Date Processed : 10/22/2009 1:47:38 AM

Chromatogram
PDA.Chibi.Muband.Dat.Proj.011205.Esc0414.kd



1 PDA.Muband / 210min.tsm

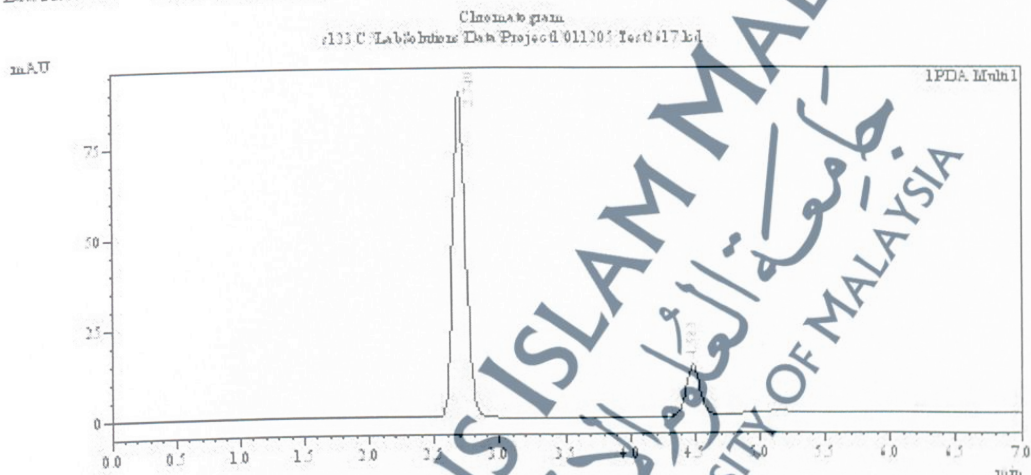
PeakTable

Peak#	Ret. Time	Area	Height	Area %	Height %
1	2.744	2250005	480.97	94.330	75.430
2	3.413	1357	314	0.044	0.049
3	3.781	170750	22833	4.200	4.547
4	4.578	1200120	110405	34.937	17.410
5	4.641	1522	320	0.037	0.050
6	4.740	3742	931	0.211	0.147
7	5.014	23376	1482	0.550	0.234
8	5.443	3617	517	0.084	0.082
9	5.690	4323	447	0.101	0.070
10	5.874	315	328	0.042	0.052
11	6.159	3884	480	0.145	0.074
12	6.339	5441	513	0.139	0.081
13	6.787	12981	641	0.320	0.104
14	6.933	5545	544	0.134	0.084
15	7.447	44071	3274	1.084	0.514
16	7.948	2543	174	0.043	0.027
17	8.501	3434	428	0.084	0.047
18	8.739	23342	1738	0.550	0.274
19	9.170	14277	1471	0.400	0.229
20	9.372	20783	1497	0.504	0.248
Total		4045329	634132	100.000	100.000

INSTITUT SAINS BIOLOGI
FAKULTI SAINS
UNIVERSITI MALAYA

Sample Information

Acquired by : Alimin
 Sample Name : r133
 Sample ID : Kaseb (Muband Acc. 12-Ead)
 Vial# :
 Injection Volume : 20 uL
 Data Filename : 011205 Test041.Ld
 Method Filename : HCA.Majeed lab.mab.kem
 Batch Filename :
 Report Filename :
 Date Acquired : 10/02/2009 9:50 AM
 Date Processed : 10/02/2009 9:50 AM



1 PDA.Mvnl1 / 010nm +nm

PeakTable

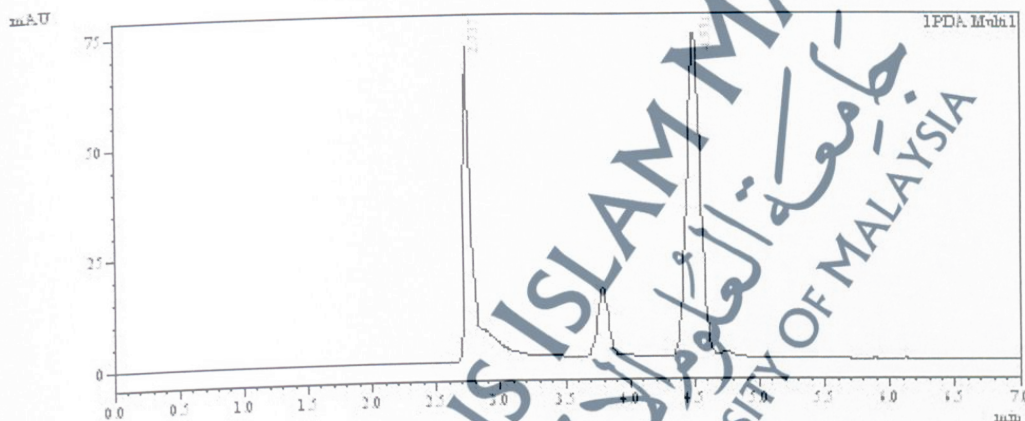
Peak#	Ret. Time	Area	Height	Area %	Height %
1	2.749	77169	80168	77.169	79.994
2	2.959	11054	910	1.359	0.833
3	3.148	3404	783	0.419	0.484
4	3.329	4100	830	0.751	0.727
5	3.649	7477	878	0.920	0.770
6	3.810	9207	843	1.154	0.817
7	3.712	3322	880	0.968	0.773
8	4.083	108674	13896	11.791	11.161
9	4.225	2594	278	0.295	0.244
10	4.848	9858	3278	1.314	1.094
11	4.234	8857	440	1.103	0.384
12	4.542	4005	427	0.739	0.749
13	4.847	3033	338	0.373	0.209
14	8.304	1120	115	0.138	0.101
15	9.402	4740	372	0.584	0.324
Total		812083	114100	100.000	100.000

INSTITUT SAINS BIOLOGI
FAKULTI SAINS
UNIVERSITI MALAYA

Sample Information

Acquired by : Admin
 Sample Name : 674
 Sample ID : Kocelle (Mutan Acc. 12- White)
 Vial#:
 Injection Volume : 20 uL
 Data Filename : 011205 Test0433.kd
 Method Filename : HCA.Majeed.bahmat@um.edu.my
 Batch Filename :
 Report Filename :
 Date Acquired : 10/22/2009 08:43:35 AM
 Date Processed : 10/22/2009 08:43:35 AM

Chromatogram
 #24 C:\LabSolutions\Data\Project\011205 Test0433.kd



1 PDA.Mvnl1 / 210nm 4nm

PeakTable

Peak#	Ret. Time	Area	Height	Area %	Height %
1	2.875	11.8	143	0.100	0.004
2	3.737	3507.3	1455	31.241	41.783
3	3.601	1743	323	0.148	0.159
4	3.782	1093.2	1424	9.523	9.496
5	4.471	5613.6	7434.4	48.203	43.474
6	4.441	1429.8	1908	1.387	1.114
7	4.734	406.1	432	0.358	0.344
8	5.105	82.1	520	0.072	0.304
9	5.55	23.7	387	0.214	0.148
10	5.911	437.9	328	0.344	0.192
11	5.879	130.8	139	0.111	0.082
12	7.443	947.1	840	0.823	0.491
13	7.704	232.4	221	0.198	0.139
14	8.170	380.3	384	0.334	0.225
15	9.322	4937.5	3434	4.202	3.002
Total		117492.4	171013	100.000	100.000

INSTITUT SAINS BIOLOGI
FAKULTI SAINS
UNIVERSITI MALAYA

Sample Information

Acquired by : Admin
Sample Name : 0119
Sample ID : E0416 (Mutan Acc 12- Wlab)
Vial#:
Injection Volume : 20 uL
Data Filename : 011205 Test034.Ld
Method Filename : HCA.Majed.khmat@um.edu.my
Batch Filename :
Export Filename :
Date Acquired : 10/22/2009 8:27:11 AM
Data Processed : 10/22/2009 8:37:18 AM

Chromatogram
0119 C:\Lab\Instruments\Data\Project\011205 Test034.Ld



1 PDA.Mvnl1 / 210nm 4nm

PeakTable

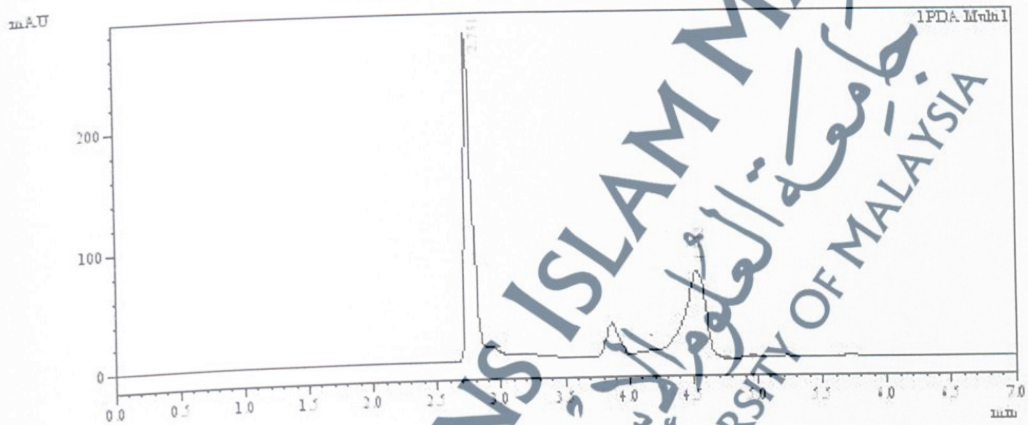
Peak#	Ret Time	Area	Height	Area %	Height %
1	1.438	1055	114	0.151	0.138
2	1.911	37006	2878	5.354	3.477
3	2.371	3024	1844	1.022	2.227
4	2.838	37944	1948	5.230	2.378
5	3.217	2446	1293	3.585	1.542
6	4.512	46148	45711	47.148	79.379
7	4.617	4628	4234	5.254	5.115
8	4.721	4720	524	0.978	0.447
9	4.849	3887	438	0.544	0.329
10	4.971	2710	305	0.384	0.349
11	5.259	3349	220	0.487	0.244
12	5.611	4349	377	0.434	0.455
13	5.853	12139	404	1.744	0.730
14	6.091	3341	427	0.484	0.216
15	6.451	2753	227	0.401	0.284
16	6.741	1449	131	0.214	0.158
17	7.085	2510	252	0.345	0.305
18	7.331	3849	303	0.543	0.344
19	7.728	3155	225	0.459	0.271
20	8.140	1047	70	0.152	0.084
Total		487279	82782	100.000	100.000

INSTITUT SAINS BIOLOGI
FAKULTI SAINS
UNIVERSITI MALAYA

Sample Information

Acquired by: Adam
Sample Name: 445
Sample ID: Gaschroma.stromaly
Vial#:
Injection Volume: 20 uL
Data Filename: 011205 Test0402.kd
Method Filename: HCA.Majeed.khmatankun
Batch Filename:
Export Filename:
Date Acquired: 10/22/2009 12:51:20 AM
Data Processed: 10/22/2009 10:24 AM

Chromatogram
445 C:\LabSoftware\Data\Project\011205 Test0402.kd



1 PDA.Mulh1 / 210nm +sm

PeakTable

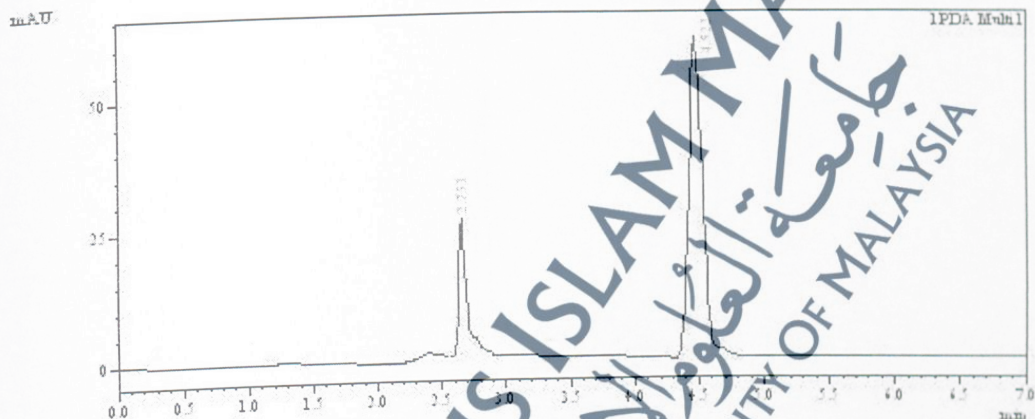
Peak#	Retention Time	Area	Height	Area %	Height %
1	2671	134538	29172	52.134	70.884
2	2890	1800	2189	0.244	0.744
3	3138	2487	497	0.477	0.160
4	3385	22605	29514	3.443	7.431
5	4320	954305	74174	35.745	181.77
6	4397	439	383	0.148	0.100
7	5209	342	40	0.119	0.119
8	710	2019	1149	0.344	0.302
9	7490	1824	272	0.070	0.070
10	7721	2018	1039	0.459	0.249
11	7974	4500	425	0.175	0.110
12	9019	15174	1017	0.579	0.243
13	9409	21720	1248	0.329	0.328
Total		2419414	384768	100.000	100.000

INSTITUT SAINS BIOLOGI
FAKULTI SAINS
UNIVERSITI MALAYA

Sample Information

Acquired by : Admin
Sample Name : 108
Sample ID : Gencina streptaki
Vial#:
Injection Volume: 20 uL
Data Filename : 011205 Test0417.kd
Method Filename : HCA.Majed.halmsab.km
Batch Filename :
Export Filename :
Date Acquired : 10/22/2009 14:01 AM
Data Processed : 10/22/2009 15:05 AM

Chromatogram
108 C:\LabSolutions\Data\Project\011205 Test0417.kd



1 PDA.Meth1 / 210nm.tsm

PeakTable

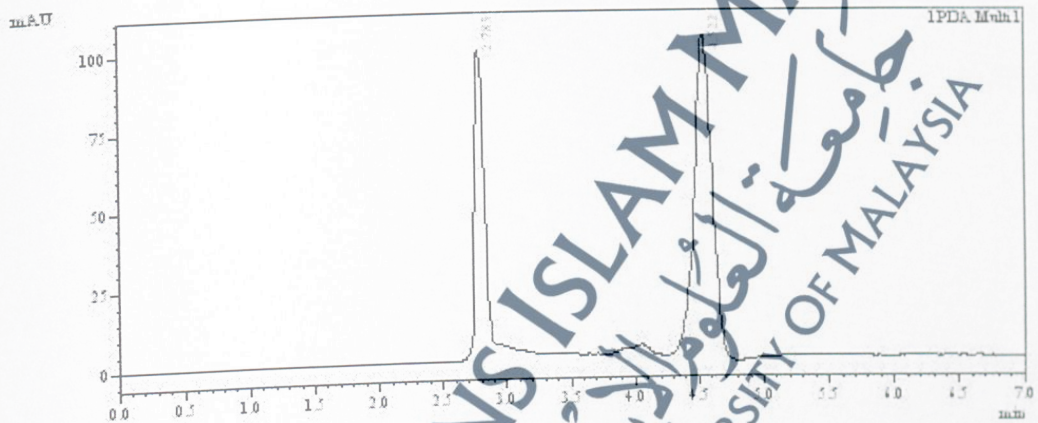
Peak#	Ret. Time	Area	Height	Area%	Height%
1	1.103	6481	424	0.041	0.430
2	1.800	16214	173	0.212	0.174
3	2.447	97302	1844	3.540	1.880
4	2.698	4110	1017	0.057	1.031
5	2.858	4700	1148	0.064	1.145
6	3.743	154434	24914	17.529	27.243
7	3.847	28914	3344	5.048	3.374
8	4.522	521082	42247	47.971	43.053
9	5.419	2988	434	0.037	0.434
Total		743317	94759	100.000	100.000

INSTITUT SAINS BIOLOGI
FAKULTI SAINS
UNIVERSITI MALAYA

Sample Information

Acquired by : Adnan
Sample Name : 094
Sample ID :
Vial# :
Injection Volume : 20 uL
Data Filename : 011205 Test0515.kd
Method Filename : HPLC.Majed.lalmutawakim
Batch Filename :
Export Filename :
Date Acquired : 10/21/2009 2:00:24 PM
Data Processed : 10/21/2009 3:00:27 PM

Chromatogram
094 C:\Lab\Labwork Data\Project\011205 Test0515.kd



1 PDA.Mulh1 / 210nm.tsm

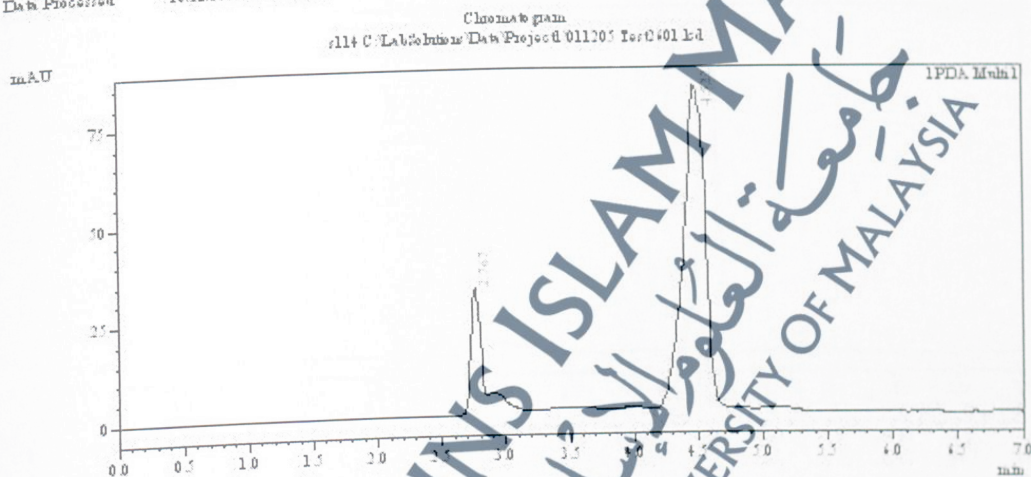
PeakTable

Peak#	Ret Time	Area	Height	Area %	Height %
1	1.478	1172	141	0.045	0.078
2	2.783	630442	96203	36.009	47.571
3	3.478	192	233	0.109	0.123
4	3.703	1536	205	0.102	0.101
5	4.012	18190	3139	2.136	1.530
6	4.291	1013	252	0.077	0.122
7	4.512	103929	103929	59.322	70.344
8	6.494	2442	140	0.137	0.078
9	9.421	1031	111	0.040	0.074
Total		1750779	204434	100.000	100.000

INSTITUT SAINS BIOLOGI
FAKULTI SAINS
UNIVERSITI MALAYA

Sample Information

Acquired by Admin
Sample Name #114
Sample ID Garonda garuda ga
Vial#
Injection Volume 20 µL
Data Filename 011205 Test0401 Ed
Method Filename HCA Majed kalmatukm
Batch Filename
Export Filename
Date Acquired 10/21/2009 10:43:51 PM
Date Processed 10/21/2009 10:48:53 PM



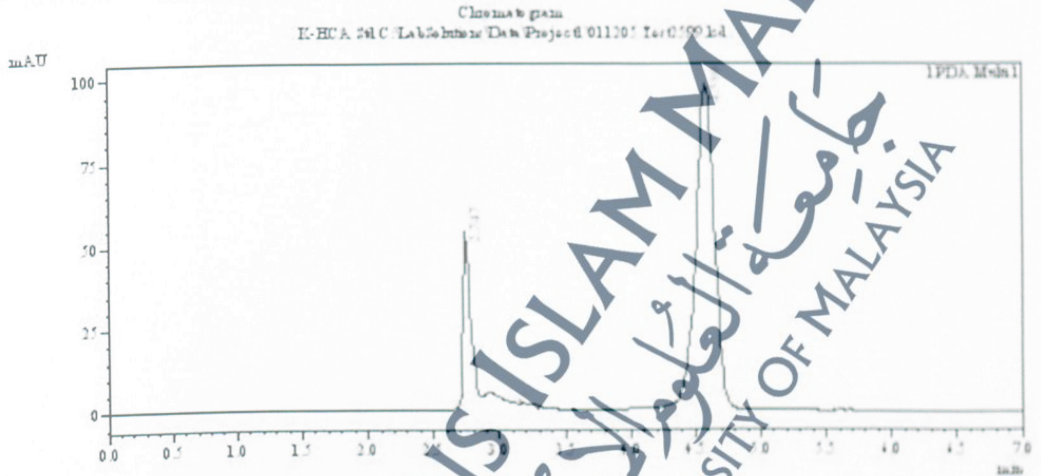
PeakTable

Peak#	Ret. Time	Area	Height	Area %	Height %
1	2.717	178140	32394	11.227	20.517
2	2.838	49378	5778	4.431	3.440
3	3.290	6787	1031	0.554	0.433
4	4.222	99700	83432	42.833	52.843
5	4.438	274874	31455	17437	19.922
6	4.669	34847	1350	1.544	0.855
7	5.254	4072	99	0.048	0.043
8	5.838	2011	218	0.137	0.138
Total		153843	155757	100.000	100.000

INSTITUT SAINS BIOLOGI
 FAKULTI SAINS
 UNIVERSITI MALAYA

Sample Information

Acquired by : Adam
 Sample Name : K-HCA Sol
 Sample ID : Garcinia cambogia
 Vial# :
 Injection Volume : 20 uL
 Data File Name : 0111201 Test0001.d
 Method File Name : HCA.METHOD
 Batch File Name :
 Report File Name :
 Date Acquired : 10/21/2009 10:24:10 PM
 Data Processed : 10/21/2009 10:34:54 PM



1 PDA.Meth1 / 210nm +sm

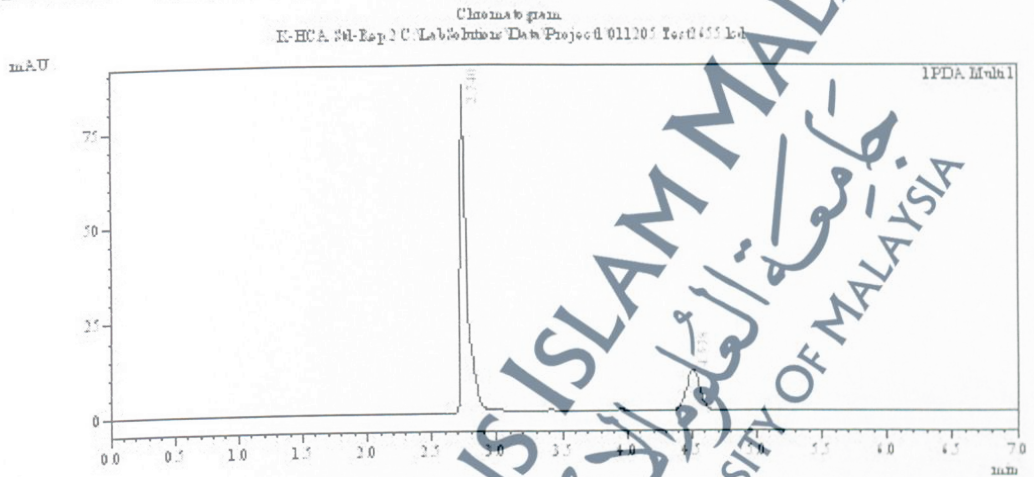
PeakTable

Peak#	Ret Time	Area	Height	Area%	Height%
1	2.592	1043	543	0.177	0.337
2	2.747	10974	74892	1.963	32.419
3	3.024	2217	1701	0.002	3.417
4	3.355	19170	1217	1.332	1.029
5	3.591	5426	1190	0.400	0.715
6	3.849	3822	1003	2.390	1.346
7	4.108	10342	90742	71.291	10.190
8	4.367	114	129	0.000	0.077
9	4.711	1292	117	0.000	0.004
10	9.064	24470	2110	1.540	1.252
11	9.731	3431	234	0.232	0.148
Total		1430910	144017	100.000	100.000

INSTITUT SAINS BIOLOGI
FAKULTI SAINS
UNIVERSITI MALAYA

Sample Information

Acquired by : Admin
 Sample Name : K-HCA_Sol_Exp3
 Sample ID : 5099ml
 Vial# :
 Injection Volume : 20 uL
 Data Filename : 011205 Test0455.kd
 Method Filename : HCA_Majeed_labmatan.kbm
 Batch Filename :
 Export Filename :
 Date Acquired : 10/22/2009 11:54:10 PM
 Date Processed : 10/22/2009 1:04:14 PM



1 PDA.Meth1 / 210nm +1nm

PeakTable

PDA.Ch1 210nm +1nm

Peak#	Est. Time	Area	Height	Area %	Height %
1	2.740	330943	6963	78.155	87.340
2	3.409	244	393	0.044	0.398
3	3.641	402	492	0.050	0.498
4	4.159	176	244	0.043	0.249
5	4.538	81357	11043	19.188	11.191
6	7.247	124	120	0.029	0.122
7	8.738	194	141	0.043	0.143
Total		425492	98378	100.000	100.000

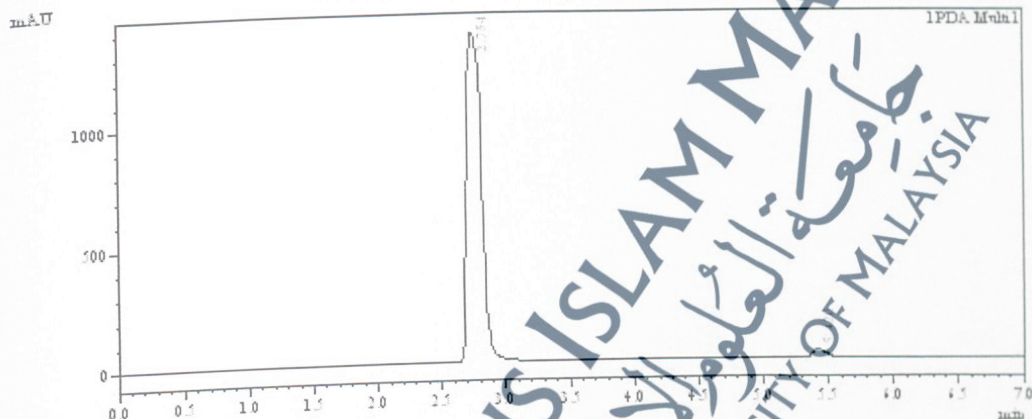
INSTITUT SAINS BIOLOGI
FAKULTI SAINS
UNIVERSITI MALAYA

Sample Information

Acquired by: Adnan
Sample Name: LG cam
Sample ID:
Vial#: 10
Injection Volume: 20 µL
Data Filename: 011205 Test0549.kd
Method Filename: HCA.Majood.lalman@um.edu.my
Batch Filename:
Report Filename:
Date Acquired: 10/20/2009 11:33:15 PM
Date Processed: 10/20/2009 11:45:15 PM

Chromatogram

LG cam C:\LabSolutions\Data\Project 011205 Test0549.kd



1 PDA.Meth1 / 210nm 4mm

PeakTable

Peak#	Ret Time	Area	Height	Area %	Height %
1	2.74	1132013	1677402	97.700	97.378
2	4.20	44143	34932	2.288	2.411
3	7.404	1439	162	0.013	0.011
Total		11461935	1414494	100.000	100.000

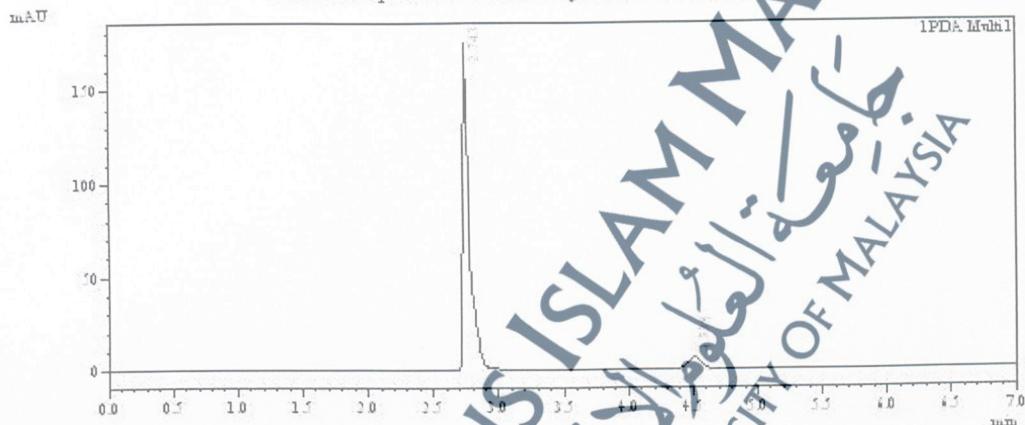
INSTITUT SAINS BIOLOGI
FAKULTI SAINS
UNIVERSITI MALAYA

Sample Information

Acquired by : Admin
 Sample Name : K-HCA 3M-Exp1
 Sample ID : 10091ml
 Vial#:
 Injection Volume: 20 uL
 Data Filename : 011205 Test0454.Ltd
 Method Filename : HPLC.Merged.Ltd
 Batch Filename :
 Report Filename :
 Date Acquired : 10/22/2009 10:43 PM
 Date Processed : 10/22/2009 11:47 PM

Chromatogram

K-HCA 3M-Exp1 C:\LabSolutions\Data\Project 011205 Test0454.Ltd



1 PDA.Mvulh1 / 310nm 4nm

PeakTable

PDA.Chl 310nm 4nm

Peak#	Ret Time	Area	Height	Area %	Height %
1	0.274	10.45	59	0.154	0.049
2	2.745	68314	152332	92.373	94.140
3	3.543	1173	148	0.171	0.052
4	4.175	3205	432	0.322	0.237
5	4.538	44941	4044	6.540	3.327
6	5.413	1341	87	0.189	0.047
7	7.282	1704	140	0.219	0.088
Total		68328	152332	100.000	100.000

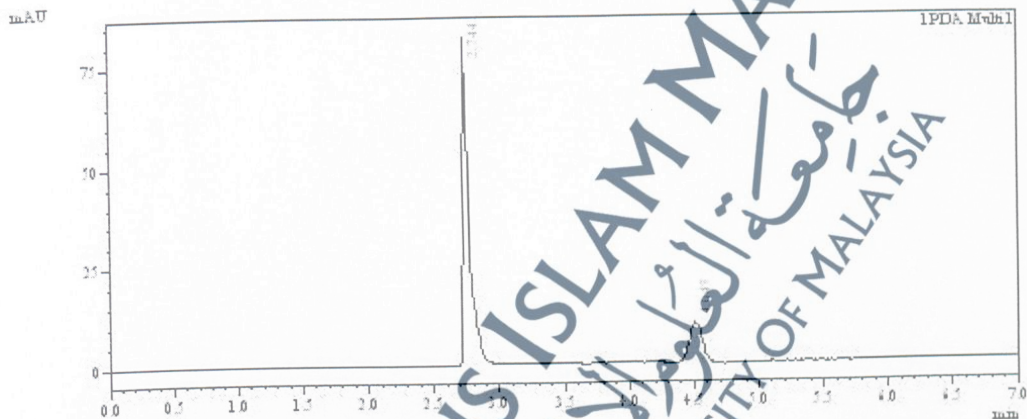
INSTITUT SAINS BIOLOGI
FAKULTI SAINS
UNIVERSITI MALAYA

Sample Information

Acquired by: Adnan
 Sample Name: K-HCA.Mt-Exp1
 Sample ID: 8099141
 Vial#:
 Injection Volume: 20 µL
 Data Filename: 011205 Test054.kd
 Method Filename: HCA.Majood.lalimat@unbm
 Batch Filename:
 Report Filename:
 Date Acquired: 10/22/2009 12:53:51 PM
 Date Processed: 10/22/2009 12:53:54 PM

Chromatogram

K-HCA.Mt-Exp1 C:\LabSolutions\Data\Project01\011205 Test054.kd



1 PDA.Mtdh.1 / 210nm x 2mm

PeakTable

PDA.Chl 210nm x 2mm

Peak#	Ret. Time	Area	Height	Area %	Height %
1	29.744	200201	81770	77.285	87.401
2	34.22	2547	422	0.420	0.451
3	39.94	3489	403	0.921	0.431
4	45.82	25454	10407	20.253	11.337
5	47.44	1004	104	0.244	0.111
6	53.74	1041	94	0.277	0.058
7	58.51	4069	147	0.388	0.179
Total		258270	85277	100.000	100.000

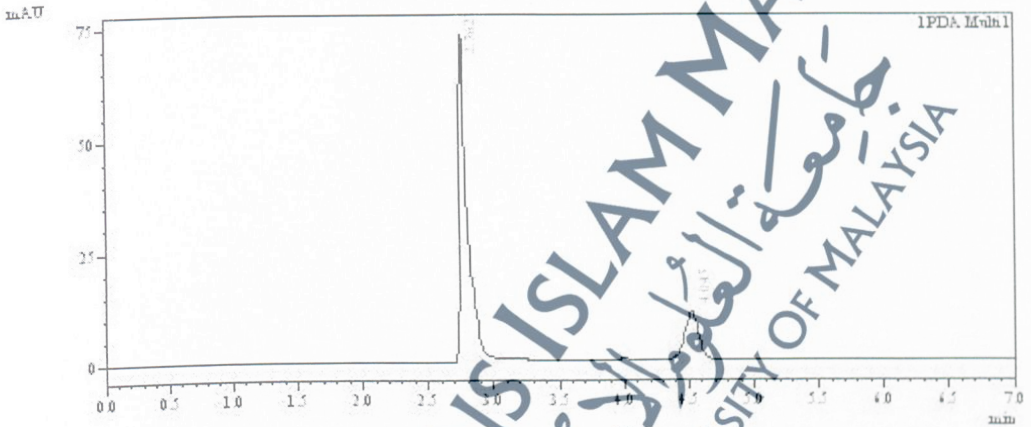
INSTITUT SAINS BIOLOGI
FAKULTI SAINS
UNIVERSITI MALAYA

Sample Information

Acquired by : Admin
 Sample Name : K-HCA Sol-Exp 2
 Sample ID : 209mgul
 Vial# :
 Injection Volume : 20 µL
 Data Filename : 011205 Test0504.txt
 Method Filename : HCA.Majed.lalma.tanaka
 Batch Filename :
 Report Filename :
 Date Acquired : 10/22/2009 7:30:34 AM
 Date Processed : 10/22/2009 7:40:41 AM

Chromatogram

Sol K-HCA C:\Lab\labdata\Date Project\011205 Test0504.txt



1 PDA.Mulh1 / 210nm +nm

PeakTable

PDA.Chl 210nm +nm

Peak#	Ret. Time	Area	Height	Area %	Height %
1	2.742	320715	73.630	78.880	84.572
2	3.364	1042	347	0.499	0.411
3	4.542	20431	10774	19.782	12.747
4	6.342	105	21	0.240	0.040
5	6.705	1540	177	0.379	0.210
Total		404788	84741	100.000	100.000

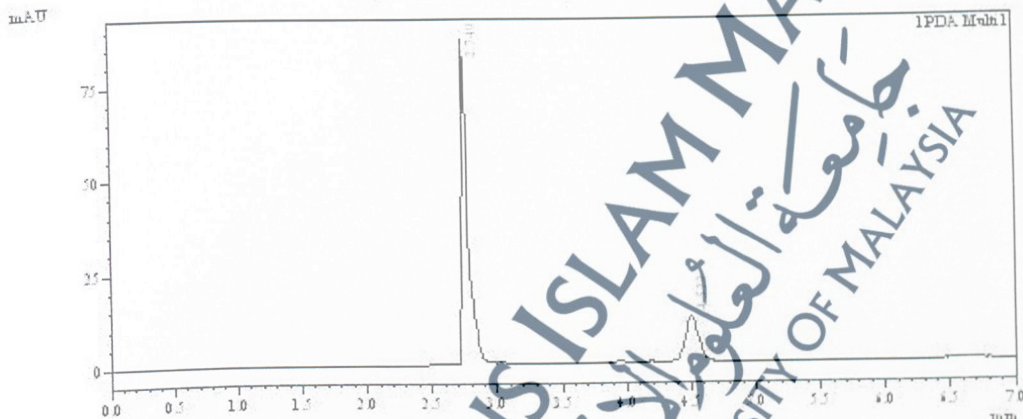
INSTITUT SAINS BIOLOGI
FAKULTI SAINS
UNIVERSITI MALAYA

Sample Information

Assigned by : Admin
 Sample Name : K-HCA SM-Exp1
 Sample ID : 100mg/ml
 Vial# :
 Injection Volume : 20 µL
 Data Filename : 011205 Test0452.kd
 Method Filename : HCA.Majed labmat.kbm
 Batch Filename :
 Report Filename :
 Date Acquired : 10/22/2009 12:22:44 PM
 Data Processed : 10/22/2009 12:33:48 PM

Chromatogram

K-HCA SM-Exp1 C:\LabSoftware\Data\Project\011205 Test0452.kd



1 PDA.Mnrl1 / 210nm + 2nm

PeakTable

PDA.Chl 210nm + 2nm

Peak#	Ret. Time	Area	Height	Area %	Height %
1	1.961	1345	110	0.228	0.109
2	2.475	1561	100	0.317	0.099
3	2.749	307301	87344	75.043	84.240
4	3.942	2580	382	0.583	0.377
5	4.164	1445	263	0.404	0.279
6	4.522	66197	12173	21.507	13.023
7	4.714	2974	332	0.724	0.328
8	4.847	1784	294	0.382	0.292
9	8.440	107	43	0.242	0.042
10	9.417	629	174	0.444	0.172
Total		408901	101259	100.000	100.000

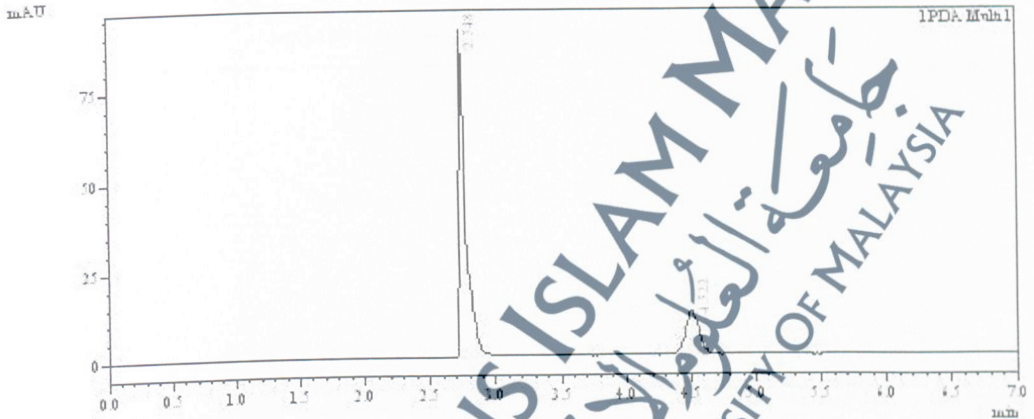
INSTITUT SAINS BIOLOGI
FAKULTI SAINS
UNIVERSITI MALAYA

Sample Information

Acquired by : Adnan
 Sample Name : K-HCA 3M-Exp 2
 Sample ID : 100ng/ml
 Vial# :
 Injection Volume : 20 µL
 Data Filename : 011205 Test453.kd
 Method Filename : HCA_Majeed\labdata\bin
 Batch Filename :
 Export Filename :
 Date Acquired : 10/22/2009 12:53:07 PM
 Data Processed : 10/22/2009 12:43:11 PM

Chromatogram

K-HCA 3M-Exp 2 C:\Lab\bin\bin\Data\Project\011205 Test453.kd



1 PDA.Mnh1.1/310nm 4nm

PeakTable

PDA.C11 310nm 4nm

Peak#	Ret. Time	Area	Height	Area %	Height %
1	2.748	74912	91340	77.257	87.205
2	3.593	2254	359	0.514	0.343
3	4.187	2098	355	0.474	0.339
4	4.333	91432	12330	20.481	11.770
5	7.037	1267	98	0.281	0.094
6	7.499	1160	84	0.248	0.082
7	8.447	1744	174	0.530	0.148
Total		43005	104745	100.000	100.000

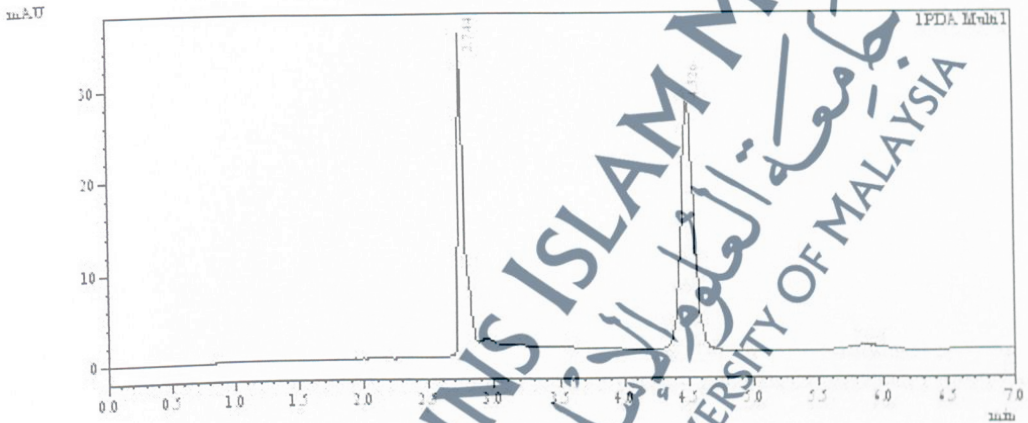
INSTITUT SAINS BIOLOGI
FAKULTI SAINS
UNIVERSITI MALAYA

Sample Information

Acquired by : Admin
 Sample Name : K-HCA Scl-Exp1
 Sample ID : 2009mg1
 Vial#:
 Injection Volume : 20 µL
 Data Filename : 011207_1sc0450.Lcd
 Method Filename : HCA_Majeed_hlmawebkim
 Batch Filename :
 Report Filename :
 Date Acquired : 10/22/2009 12:01:18 PM
 Date Processed : 10/22/2009 12:11:21 PM

Chromatogram

K-HCA Scl-Exp1 C:\Lab\Software\Data\Project 011207_1sc0450.Lcd



1 PDA.Msk1 / 210nm +nm

PeakTable

PDA.Ch1 210nm +nm

Peak#	Est. Time	Area	Height	Area %	Height %
1	0.864	1474	109	0.354	0.158
2	1.157	1049	131	0.259	0.194
3	1.835	1059	82	0.259	0.119
4	2.400	1198	131	0.317	0.190
5	2.744	104370	35423	30.844	61.308
6	2.944	2221	192	7.914	2.789
7	3.287	1134	623	2.759	0.901
8	3.913	804	82	1.971	1.184
9	4.177	647	778	1.580	1.127
10	4.373	27	29	0.043	0.426
11	4.524	49344	27091	47.372	39.240
12	5.841	1224	61	2.996	0.870
13	6.441	1272	129	0.312	0.187
14	7.179	1340	123	0.333	0.178
15	7.498	1517	223	0.445	0.323
16	7.823	1144	111	0.285	0.140
17	9.424	188	43	1.270	0.420
Total		40831	49040	100.000	100.000

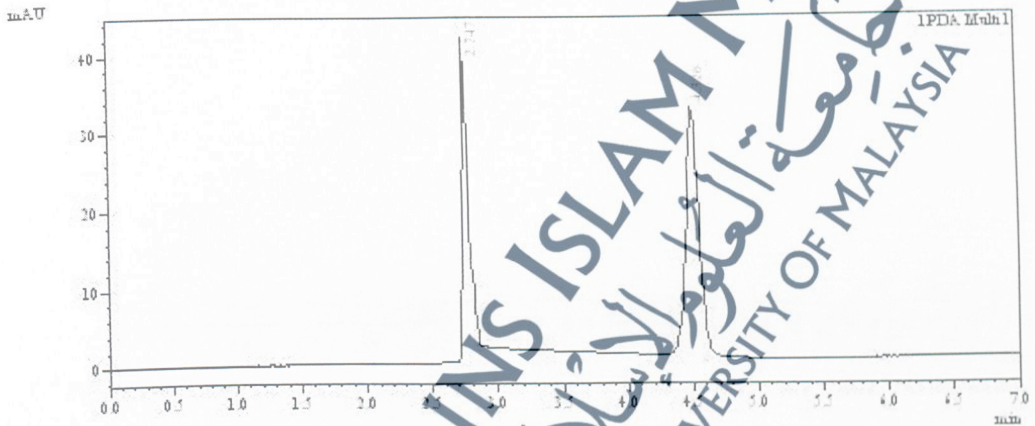
INSTITUT SAINS BIOLOGI
FAKULTI SAINS
UNIVERSITI MALAYA

Sample Information

Acquired by : Admin
Sample Name : K-HCA 3ml-Exp-2
Sample ID : 2009mg/ml
Vial# :
Injection Volume : 20 uL
Data Filename : 011205 Test0451.kd
Method Filename : HCA_Majeed_labma_ban.km
Batch Filename :
Report Filename :
Date Acquired : 10/22/2009 12:12:05 PM
Data Processed : 10/22/2009 12:22:08 PM

Chromatogram

K-HCA 3ml-Exp-2 C:\Lab\Software\Data\Project 011205 Test0451.kd



1 PDA.Mnvl1 / 210nm +nm

PeakTable

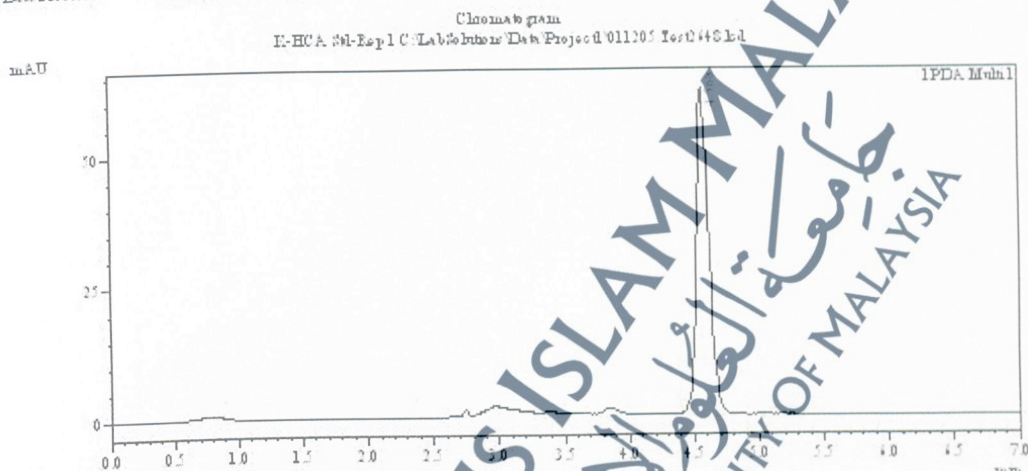
PDA.Ch1 210nm +nm

Peak#	Ret Time	Area	Height	Area %	Height %
1	1.931	1110	48	0.238	0.053
2	2.315	1030	74	0.221	0.092
3	2.747	170834	41934	32.321	71.413
4	2.924	34724	2283	7.448	2.799
5	3.424	889	487	1.907	0.542
6	3.573	1374	474	0.283	0.181
7	3.639	2743	372	0.444	0.414
8	3.893	10443	1013	2.381	1.242
9	4.188	4801	501	1.479	1.101
10	4.387	3440	379	0.784	0.445
11	4.524	232091	32134	49.740	39.394
12	5.089	1049	149	0.221	0.183
13	6.319	1701	147	0.322	0.183
14	7.207	1311	153	0.182	0.188
15	7.524	1922	154	0.412	0.191
16	8.444	1247	120	0.247	0.147
17	8.531	4158	519	1.320	0.434
Total		444418	31747	100.000	100.000

INSTITUT SAINS BIOLOGI
FAKULTI SAINS
UNIVERSITI MALAYA

Sample Information

Acquired by : Adnan
Sample Name : K-HCA 3M-Exp1
Sample ID : 400ng/ml
Vial# :
Injection Volume : 20 µL
Data Filename : 011105 Test048.kd
Method Filename : HCA.Majeed.lahmad@um.edu.my
Batch Filename :
Export Filename :
Date Acquired : 10/22/2009 11:39:14 AM
Date Processed : 10/22/2009 11:49:17 AM



1 PDA.Muh1.1 / 2102nm 4min

PeakTable

PDA.C11 2102nm 4min

Peak#	Retention	Area	Height	Area%	Height%
1	0.784	13009	640	2.185	1.170
2	2.258	1470	113	0.247	0.154
3	2.433	11777	172	0.198	0.234
4	2.741	8294	151	1.38%	2.041
5	3.827	44888	2227	7.834	3.031
6	3.357	10720	1094	1.753	1.491
7	3.332	9441	772	1.422	1.071
8	3.845	17054	1709	2.819	2.325
9	4.198	8112	509	1.345	0.492
10	4.548	432814	42350	72.611	84.837
11	7.111	1110	125	0.187	0.170
12	8.944	43012	1814	7.235	2.525
13	9.432	2047	192	0.344	0.242
Total		584484	73495	100.000	100.000

INSTITUT SAINS BIOLOGI
 FAKULTI SAINS
 UNIVERSITI MALAYA

Sample Information

Acquired by : Admin
 Sample Name : K-HCA Sol-Exp 2
 Sample ID : 400mg/ml
 Vial# :
 Injection Volume : 20 uL
 Data File Name : 011201 Test049.kd
 Method File Name : HCA.Majed.lalman@umkm
 Batch File Name :
 Report File Name :
 Date Acquired : 10/22/2009 11:00:22 AM
 Data Processed : 10/22/2009 12:00:27 PM

Chromatogram

K-HCA Sol-Exp 2 C:\LabSoftware\Dat Project\011201 Test049.kd



1 FDA.Meth1 / 210nm 4mm

PeakTable

Peak#	Retention	Area	Height	Area%	Height%
1	0.741	1017	1394	1.24%	1.99%
2	2.959	4184	1929	4.91%	2.78%
3	3.403	3144	72%	1.54%	1.03%
4	3.887	9024	120%	1.72%	1.73%
5	4.175	44015	43475	84.13%	99.24%
6	5.143	1015	534	1.94%	0.74%
7	6.030	1192	119	0.32%	0.14%
8	6.247	107	111	0.2%	0.1%
9	6.272	962	94	1.09%	1.29%
Total		52346	7043	100.00%	100.00%