

THE MODEL OF GRADUATE IN INTEGRATION OF NAQLI AND AQLI KNOWLEDGE

Nasrul Hakim Ahmad
Senior Deputy Registrar

Masni Md Hasim
Senior Psychology Officer

Prof. Dato' Dr. Hassan Basri Awang Mat Dahan
Deputy Vice Chancellor (Student Affairs and Alumni)

Student Affairs Division
Universiti Sains Islam Malaysia
71800 Bandar Baru Nilai, Nilai, Negeri Sembilan, Malaysia

Email: nasrul@usim.edu.my; masni@usim.edu.my; tnc.hep@usim.edu.my

Contact No.: 06-7986100; 06-7986141; 06-7988017

ABSTRACT

In accordance with its philosophy, vision, mission and objectives, the Universiti Sains Islam Malaysia (USIM) has moved one step further in the effort of generating competitive graduates to satisfy the demand of nation's human resource and the needs of the *ummah* through implementation of the Model of Graduate in Integration of *Naqli* and *Aqli* Knowledge (GIINA). Through this model, students are encouraged to participate in various activities that could improve their soft skills, shape their personalities and equip them with necessary tools needed for graduation. This model is comprised of 21 criteria and further categorised into three (3) namely holistic, balanced and entrepreneurial elements. Each criterion is complete with operational definitions and attainment of any criterion entitles the students to obtain marks in terms of certain percentage. Upon graduation, the accumulated marks or the GIINA Score will be used to measure the overall performance of the graduates. All three (3) elements in this model are very much in line with the principles of human resource development as written in the Quran and Sunnah which repeatedly emphasising on holistic, balanced and entrepreneurial elements fitting the roles of being the vicegerent (*khalifah*) of Allah in this life. The three (3) elements are also in line with outcome of Malaysia Education Blueprint 2015-2025 (Higher Education) namely "Holistic, Entrepreneurial and Balanced Graduate". Preliminary result of its first implementation in 2016 shows that all graduates achieved GIINA Score more than 25% and 58.7% of them achieved 50% of GIINA Score and above. It is projected that by the year 2020, all graduates would achieve minimum 50% of GIINA Score.

Key word: Integration of *Naqli* and *Aqli*, GIINA Score, Holistic, Entrepreneurial and Balanced Graduate

THE MODEL OF GRADUATE IN INTEGRATION OF NAQLI AND AQLI KNOWLEDGE

1. Introduction

In 2014, the Office of the Deputy Vice Chancellor (Student Affairs and Alumni) USIM has successfully conducted the “2015 Student Affairs and Alumni Outcome Setting Workshop” on 24th and 25th September 2014 at Thistle Hotel, Port Dickson, Negeri Sembilan, Malaysia.

The workshop has finalised the Student Affairs and Alumni Outcome Framework and aligned it with the 2015-2025 USIM Strategic Planning. USIM Management Committee has approved the outcome framework on 17th February 2015 as the new mission of the Student Affairs and Alumni.

Later that year, Ministry of Higher Education has launched the Malaysia Education Blueprint 2015-2025 (Higher Education) on 7th April 2015 at Royal Chulan Hotel, Kuala Lumpur, Malaysia and officiated by the Honourable Dato’ Sri Mohd Najib Abdul Razak, the Prime Minister of Malaysia. The blueprint contains ten (10) shifts, four (4) of which are the “outcomes” while the other six (6) are the “enablers” designed for the purpose of charting the new direction of Malaysia’s higher education for the next ten years.

In accordance with that, the Student Affairs and Alumni Outcome Framework has been aligned to the blueprint through its outcome in the First Shift namely “Holistic, Entrepreneurial and Balanced Graduate” which is known in USIM as the Model of Graduate in Integration of *Naqli* and *Aqli* Knowledge or Model GIINA.

The model has been presented at USIM’s “2016 Strategic Planning Workshop” held on 27th and 28th August 2015 at Nilai Spring Hotel, Nilai, Negeri Sembilan, Malaysia and was also presented in front of USIM Board of Directors on the same date. The board has given its consent for the implementation of the model at bachelor level.

The model was then launched by the Honourable Dato’ Seri Utama Mohamad Hasan, the Menteri Besar Negeri Sembilan, who is also USIM Minister Mentor on 4th September 2015 while officiating the Oath Taking Ceremony for Newly Registered Undergraduate Students of 2015/2016 Academic Session.

The model is very much in line with the principles of human resource development as written in the Quran and Sunnah which repeatedly emphasising on holistic, balanced and entrepreneurial elements fitting the roles of being the vicegerent (*khalifah*) of Allah in this life. From the context of generating holistic human being, we, as the vicegerent (*khalifah*) of Allah have been reminded to look at life from a holistic context and not limited by a mere human perspective as clearly stated in the verses 200-202 of surah al-Baqarah:

“...There are men who say: “Our Lord! Give us (Thy bounties) in this world!” but they will have no portion in the Hereafter. And there are men who say: “Our Lord! Give us good in this world and good in the Hereafter, and defend us from the torment of the Fire!”. To these will be allotted what they have earned; and Allah is quick in account.”

On the other hand, we are also reminded to lead a balanced life as clearly stated in the verses 1-11 of surah al-Mu'minun:

“The believers must (eventually) win through, though who humble themselves in their prayers; Who avoid vain talk; Who are active in deeds of charity; Who abstain from sex, - Except with those joined to them in the marriage bond, or (the captives) whom their right hands possess, - for (in their case) they are free from blame, - But those who desires exceed those limits are transgressors; Those who faithfully observe their trusts and their covenants; And who (strictly) guard their prayers; These will be the heirs – Who will inherit Paradise; they will dwell therein (forever).”

Meanwhile, the value of entrepreneurial thinking and action are derived from the life of Prophet Muhammad (ﷺ), his companions and *al-Salaf al-Salih* who have successfully conducted businesses and enterprises. In a hadith narrated by Imam Ahmad, when asked about the best way of earning, Prophet Muhammad (ﷺ) replied:

“A man's work with his hand, and every business transaction which is approved.”
(Al-Tirmidhi: Hadith 2783)

It is worthy to note that the model is also in tandem with the National Education Philosophy contained in National Education Policy which emphasises on developing individuals who are intellectually, spiritually, emotionally and physically balanced with firm devotion to God. The philosophy states:

“Education in Malaysia is an on-going effort towards further developing the potential of individuals in a holistic and integrated manner, so as to produce individuals who are intellectually, spiritually, emotionally and physically balanced and harmonious, based on a firm belief in and devotion to God. Such an effort is designed to produce Malaysian citizens who are knowledgeable and competent, who possess high moral standards and who are responsible and capable of achieving high level of personal well-being as well as being able to contribute to the harmony and betterment of the family, the society and the nation at large.”

Referring to the perspective of the Quran and Sunnah as its foundation and its support towards the aspiration of the Malaysia Education Blueprint 2015-2025 (Higher Education) and National Education Philosophy, Model GIINA has become the latest fundamental direction for USIM students development which helps strengthening and fostering the role of USIM as the global leader in the integration of *Naqli* and *Aqli* knowledge by the year 2025.

2. Objectives

- 2.1 Illustrating the concept and describing the implementation of Model GIINA for USIM students development at bachelor level;
- 2.2 Reporting preliminary result of first year implementation of Model GIINA among bachelor graduate 2016.

3. Concept and Implementation

Malaysia Education Blueprint 2015-2025 (Higher Education) contains ten (10) shifts, four (4) of which are the “outcomes” while the other six (6) are the “enablers” designed for the purpose of charting the new direction of Malaysia’s higher education for the next ten years. The First Shift namely “Holistic, Entrepreneurial and Balanced Graduate” is considered the paramount outcome contemplated by the blueprint and all institutions of higher learning are expected to align themselves with the outcomes and the enablers. See Figure 1.

Aligned to the aspiration of the Malaysia Education Blueprint 2015-2025 (Higher Education) and National Education Policy, Model of Graduate in Integration of *Naqli* and *Aqli* Knowledge comprises of 21 criteria and further categorised into three (3) namely holistic, balanced and entrepreneurial elements. Each criterion is complete with operational definition as the prescribed standard and attainment of any criterion entitles the students to obtain marks in terms of certain percentage. Upon graduation, the accumulated marks or the GIINA Score will be used to measure the overall performance of the graduates. See Figure 2.

In this regards, USIM focusses on the long-term students development throughout four (4) to six (6) years of study at bachelor level, depending on the programme pursued whereby the students can monitor their own progression in terms of accumulated marks from semester to semester and take appropriate steps so that they have ample time to equip themselves with the measured criteria to become holistic, balanced and entrepreneurial graduates.

Implementation of Model GIINA at bachelor level is still at its early stage. Nevertheless, all parties tasked with its implementation have been coordinating the students’ activities in concerted and more structured approach based on the operational definition of each criterion.

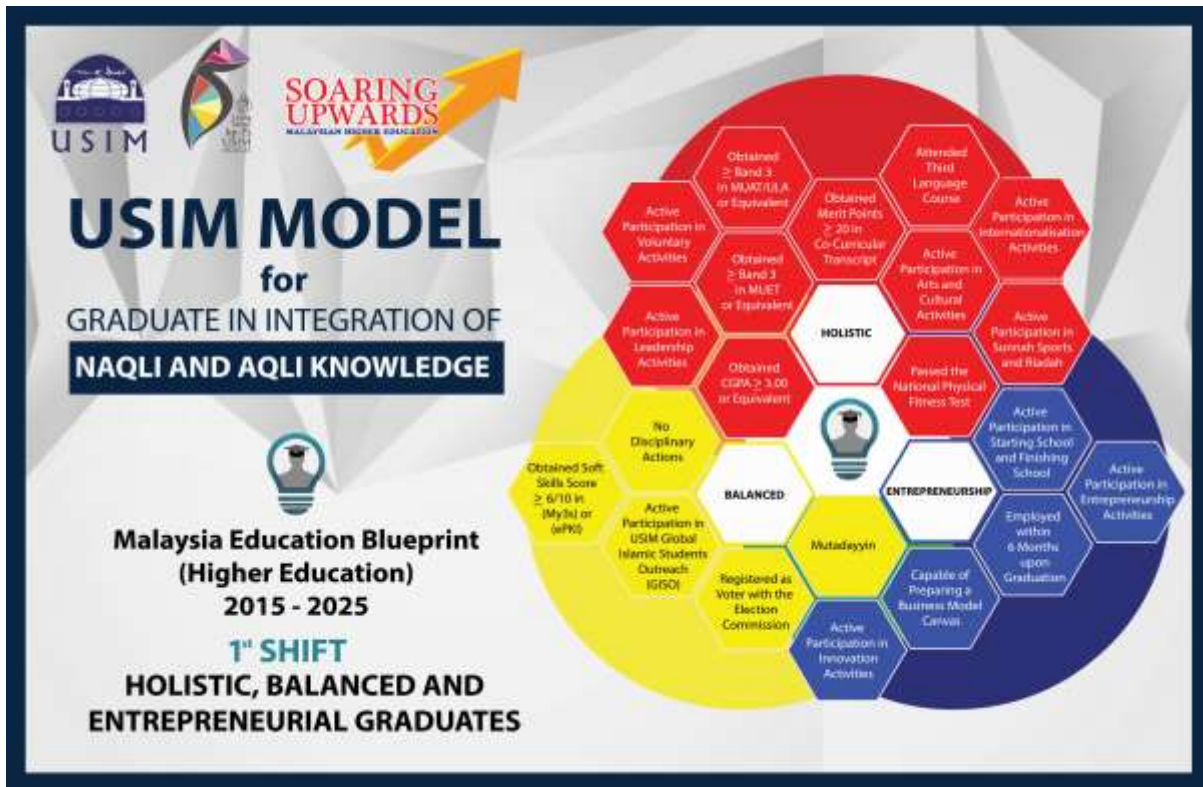
For that purpose, an information system coordinating the score for each criterion to be accumulated as GIINA Score has been developed and progressively receiving feedbacks from the parties tasked with its implementation to improve the system. The system allows the students to view their GIINA Score from semester to semester and take appropriate steps so that they have ample time to equip themselves with the measured criteria to become holistic, balanced and entrepreneurial graduates as contemplated by the First Shift of Malaysia Education Blueprint 2015-2025 (Higher Education).

FIGURE 1: The 10 Shifts of Malaysia Education Blueprint 2015-2025 (Higher Education)

The 10 Shifts



FIGURE 2: Model of Graduate in Integration of *Naqli* and *Aqli* Knowledge



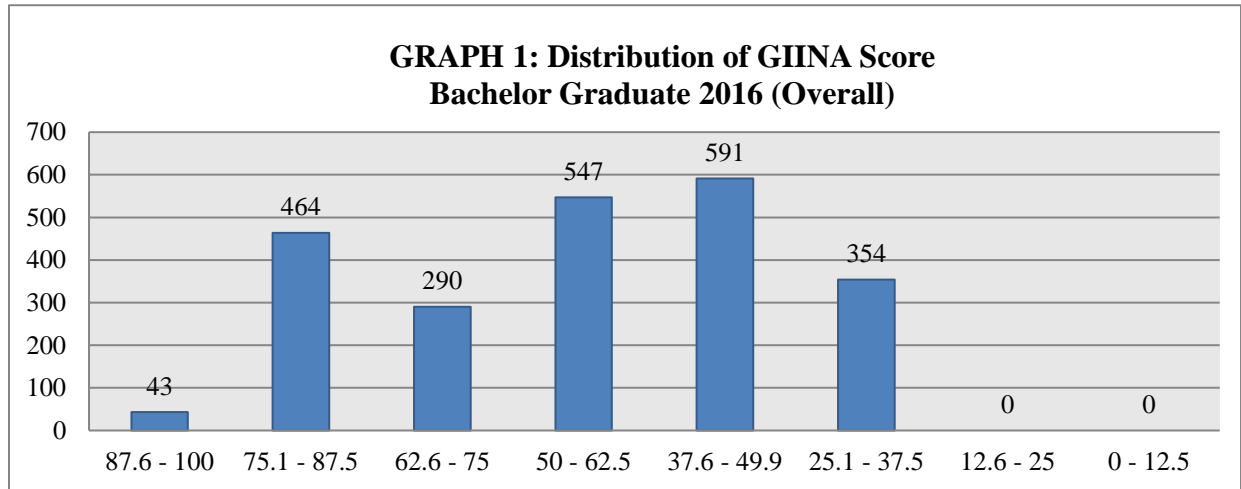
Holistic element indicates the need for the graduates to possess comprehensive characteristic including intellectual, spiritual, emotional and physical that help developing their personalities. Holistic comprises of eleven (11) criteria involving active participation in various soft skill development activities, attainment of certain academic performance and good physical fitness as illustrated in the red hexagon in Figure 2. Holistic element represents 40% of the overall GIINA Score.

Balanced element indicates the needs for the graduates to demonstrate balance between behaviour (display of good character and attitude) and knowledge (possession of knowledge and skills) to be effectively capable of contributing to the community locally and globally. Balanced element comprises of five (5) criteria signifying commitment and responsibilities towards USIM, nation and religion and also capability to carry out outreach activities for muslim communities overseas as illustrated in the yellow hexagon in Figure 2. Balanced element represents 30% of the overall GIINA Score.

Entrepreneurial element consists of five (5) criteria focusing on enterprising and innovation activities as well as activities for the purpose of employabilities as illustrated in the blue hexagon in Figure 2. Entrepreneurial element represents 30% of the overall GIINA Score.

4. Result

4.1 GIINA Score for Bachelor Graduate 2016 (Overall)



GIINA Score	Number of Graduates
87.6 - 100	43
75.1 - 87.5	464
62.6 - 75	290
50 - 62.5	547
37.6 - 49.9	591
25.1 - 37.5	354
12.6 - 25	0
0 - 12.5	0
Total	2289

Above is the result of overall GIINA Score for bachelor graduate 2016. All graduates achieved more than 25% of GIINA Score. USIM has set a target of 100% graduates achieving 50% of GIINA Score and above. Nevertheless, only 58.7% of the graduates achieved 50% of GIINA Score and above.

It must be noted that the graduates enrolled before the implementation of Model GIINA and still 58.7% of them managed to achieve 50% of GIINA Score and above. Verily, the achievement is an indicator that Model GIINA is relevant and achievable by the graduates.

If it is to be equalised to the calculation of cumulative grade point average, the normal and accepted grade point to be considered as a “passed” is 2.00 which is equivalent to 50% of GIINA Score. Having said that, it could be said that 41.3% of the graduates who scored below 50% of GIINA Score have “failed”. Nevertheless, it is not the intention of USIM to categorise the graduates into have “passed” or “failed” the GIINA Score but the performance indicates the overall competence of the graduates at the point of graduation.

Below is the result of each GIINA criteria based on faculties. There are nine (9) faculties as follow:

FST – Faculty of Science and Technology
FSU – Faculty of Syariah and Law
FEM – Faculty of Economics and Muamalat
FPQS – Faculty of Quranic and Sunnah Studies
FPBU – Faculty of Major Languages Studies
FPG – Faculty of Dentistry
FPSK – Faculty of Medicine and Health Sciences
FKP – Faculty of Leadership and Management
FKAB – Faculty of Engineering and Built Environment

“Obtained \geq Band 3 in IJLA/MUAT or Equivalent”

“Passed the National Physical Fitness Test”

There is no result for two (2) criteria namely “Obtained \geq Band 3 in IJLA/MUAT or Equivalent” (the examination is yet to be conducted at national level) and “Passed the National Physical Fitness Test” (the test so far conducted on USIM athletes only but will be participated by all students in 2017 onwards).

“Employed within 6 Months upon Graduation”

Another criterion “Employed within 6 Months upon Graduation” is not taken into the calculation of GIINA Score but included in the model for motivational purposes to encourage graduates to seek job or becoming job creators, do business or plan to further their studies as soon as possible upon graduation. The employability study is conducted at national level through Graduate Tracer Study managed directly by the Ministry of Higher Education.

“Active Participation in USIM Global Islamic Students Outreach”

One of the salient criterion is “Active Participation in USIM Global Islamic Students Outreach” or popularly known as USIM GISO. Graduates who successfully participated in this activity may also obtain marks for “Active in Voluntary Activities” and “Active Participation in Entrepreneurship Activities” since it requires the participants to conduct community engagement or community services activities for muslim communities overseas while generating income through enterprising activities to finance it. So far, 20 countries have been reached out through USIM GISO. In this regards, almost 1/3 or 33.8% of the graduates have attained the requirement of the criterion.

“Mutadayyin”

Another salient criterion is “Mutadayyin” which literally means religiousness. Almost $\frac{3}{4}$ or 73.9% of the graduates have attained the requirement of the criterion but that does not mean the other $\frac{1}{4}$ or 26.1% is not “religious” at all. For the moment, “Mutadayyin” is defined as understanding and internalising the basics of *fardh ain* constantly (theoretically and practically). Attainment of this criterion is measured through participation in *Liqah' Universiti* (a circle of discussion based on prescribed modules involving not more than ten (10) students and moderated by trained senior students in each circle) throughout the study for at least seven (7) times of meeting every semester and of not less than one (1) hour for each meeting. In the future, USIM plans to innovate a “Mutadayyin” test to accurately assess the religiousness of the graduates.

“No Disciplinary Actions”

Another criterion “No Disciplinary Actions” signifies sense of responsibilities of the graduates towards USIM. “No Disciplinary Actions” is defined as never been charged (and sentenced) for any kind of disciplinary actions as stated under Rules of Universiti Sains Islam Malaysia (Student Discipline) 2009. Here, the disciplinary actions include warning; or prohibited to be in or entering certain areas of USIM for a specific period of time; or fine of not more than two hundred ringgit; or suspended from being USIM student for a certain period; or combination of any of these sentences. 1.1% of the graduates have not successfully fulfilled the requirement of this criterion.

“Registered as Voter with the Election Commission”

In Malaysia, it is not compulsory to register as voter with the Election Commission of Malaysia. Nevertheless, USIM insists on its Malaysian students who have reached the age of 21 and above and reside at any constituency and are qualified to vote to register themselves with the commission. Even though there is no guarantee that the students who have registered will be voting on the election day, the act of registration itself signifies sense of responsibilities of the graduates towards the nation. All graduates have reached the age of 21 years old and 80.6% of the Malaysian graduates have been validated to be registered voter with the commission.

“Obtained Soft Skills Score $\geq 6/10$ in (My3s) or (ePKI)”

Due to their importance, Ministry of Higher Education has identified the soft skills required of the students in higher education institutions. There are seven (7) key elements of soft skills including communication skills, critical thinking and problem solving, team work skills, lifelong learning and information management, entrepreneurship skills, ethics and professional moral and leadership skills. The ministry has made it compulsory for the students to complete the Malaysian Soft Skill Scale (My3S) online to self-assess the mastery level of each soft skill.

Internally, USIM included mastering of English and Arabic Language into the soft skills list and introduced its own online self-assessment known as *Penilaian Kemahiran Insaniah* (ePKI – e is the symbol for online assessment). To ensure the students are capable of reasonably self-assessing themselves, USIM has developed soft skills courses and referred to standard guidelines for assessment. The result refers to ePKI conducted at the point of graduation. 56.7% of the graduates recorded 6 and above out of the scale 10.

“Active Participation in Innovation Activities”

To boost entrepreneurial thinking and motivate the students to become job creators rather than job seekers upon graduation, “Active Participation in Innovation Activities” has been made another criterion in this model. Nevertheless, only 11.9% of the graduates have been validated to be participated in such activities. Participation in any activities of producing new products or services as a result of any methods, systems or effort either through new creations or improvisation can be considered for attainment of this criterion.

Out of 18 measured criteria, 7 criteria recorded less than 50% attainment while the other 11 criteria managed to record more than 50% attainment. The lowest percentage of attainment is “Active Participation in Arts and Cultural Activities” (3.1%) while the highest percentage of attainment are “Active Participation in Leadership Activities” (100%), “Active Participation in Starting School and Finishing School Activities” (100%) and “Capable of Preparing a Business Model Canvas” (100%).

Emphasis should be given on the 7 criteria of less than 50% attainment especially of less than 25% attainment including “Attended Third Language Course” (17.4%), “Active Participation in Arts and Cultural Activities” (3.1%) and “Active Participation in Innovation Activities” (11.9%).

4.2 GIINA Score for Bachelor Graduate 2016 (Based on Criteria)

TABLE 1: GIINA Score for Bachelor Graduate 2016 (Based on Criteria)

No.	Criteria	Range	Weightage	FST	FSU	FEM	FPQS	FPBU	FPG	FPSK	FKP	FKAB	Number of Graduates
1	Active Participation in Leadership Activities		5%	382	299	299	401	451	34	48	349	26	2289
			0%	0	0	0	0	0	0	0	0	0	0
2	Active Participation in Voluntary Activities		5%	244	141	164	153	342	34	38	169	3	1288
			0%	138	158	135	248	109	0	10	180	23	1001
3	Obtained CGPA \geq Band 3.00 or Equivalent	3.76 - 4.00	4%	5	6	8	11	97	0	0	3	0	130
		3.51 - 3.75	3%	58	35	48	86	198	0	5	60	0	490
		3.26 - 3.50	2%	135	70	72	102	97	2	4	122	11	615
		3.00 - 3.25	1%	121	87	68	134	45	11	12	114	13	605
		0.00 - 2.99	0%	63	101	103	68	14	21	27	50	2	449
4	Obtained \geq Band 3 in MUET or Equivalent	6	4%	0	0	0	0	0	0	0	0	0	0
		5	3%	2	2	1	0	1	0	3	1	0	10
		4	2%	46	26	25	14	14	9	45	19	3	201
		3	1%	334	271	273	387	217	25	0	329	23	1859
		0-2	0%	0	0	0	0	219	0	0	0	0	219
5	Obtained \geq Band 3 in IJLA/MUAT or Equivalent		4%										
			0%										
6	Attended Third Language Course		4%	166	15	23	7	155	0	0	23	9	398
			0%	216	284	276	394	296	34	48	326	17	1891
7	Obtained Merit Points \geq 20 in Co-Curricular Transcript	\geq 100	4%	39	29	38	55	27	2	11	49	0	250
		76-99	3%	24	8	17	25	6	1	7	36	1	125
		51-75	2%	53	37	40	67	17	4	15	76	0	309
		20-50	1%	190	122	94	126	54	20	7	110	2	725
		0-19	0%	76	103	110	128	347	7	8	78	23	880
8	Active Participation in Arts and Cultural Activities		4%	9	10	6	17	8	0	0	20	0	70
			0%	373	289	293	384	443	34	48	329	26	2219

5. Conclusion

Based on the preliminary result of first year implementation of Model GIINA, USIM should emphasize on creating awareness among the students at bachelor level to look at the model as guidance to prepare themselves for their future and career with holistic, balanced and entrepreneurial elements. Video presentation of the model should be disseminated at all virtual platforms not only for the purpose of promoting it but also to inform the prospective students and stake holders of USIM's plan for long-term students development.

Apart from creating awareness, USIM should also focus on facilitating the students to attain the required criteria by providing and creating opportunities for them in form of activities in line with the operational definitions. In this regards, certain allocation of reasonable resources should be properly coordinated and distributed among the parties in charged to ensure concerted and structured implementation.

In summary, Model GIINA provides insight into the preparedness of the students to commence their future and career upon graduation through its measurement of GIINA Score of the stipulated criteria which have been aligned to the First Shift of Malaysia Education Blueprint 2015-2025 (Higher Education) and allows resources to be rightly allocated and distributed.

References

Ministry of Education Malaysia (2015). Malaysia Education Blueprint 2015 – 2025. Retrieved from <http://lib.usim.edu.my/e-resources/malaysia-education-blueprint-2015-2025-higher-education>

National Education Policy

Retrieved from <http://www.moe.gov.my/index.php/en/dasar/dasar-pendidikan-kebangsaan>

Appendix 1



OPERATIONAL DEFINITION
GRADUATE IN INTEGRATION OF NAQLI AND AQLI KNOWLEDGE

Operational Definition:

Holistic (الشمولية) - Graduates possess comprehensive characteristics including intellectual, spiritual, emotional and physical that help to develop their personalities

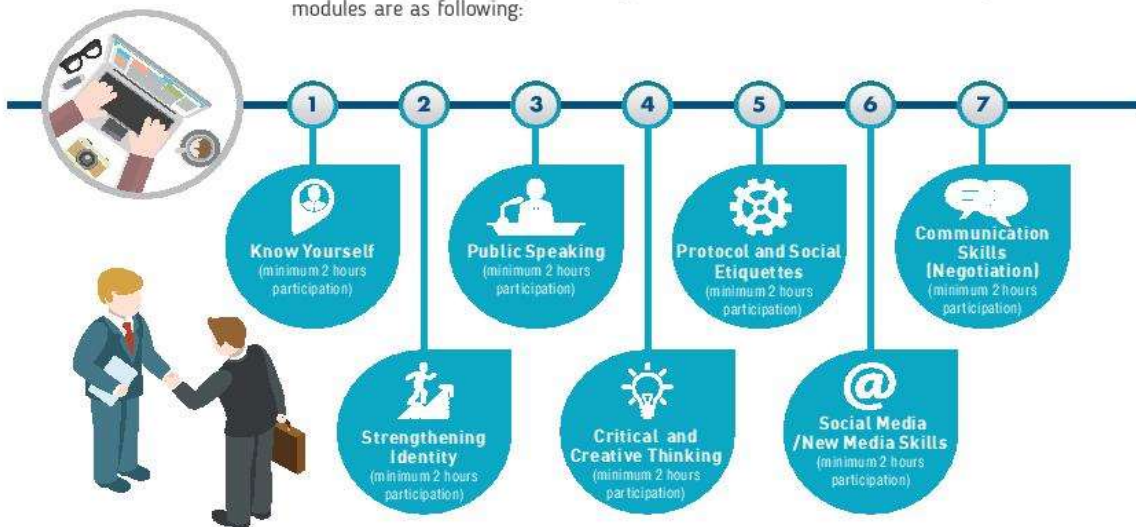


1.0 Active Participation in Leadership Activities

Leadership activities consist of two categories:

1

Leadership Activities: Leadership activities that fulfil any 3 out of 7 modules proposed by the Malaysian Universities (Council for Leadership and Training) (MAKLUM) and must be implemented by or through the Student Affairs Division. The prescribed modules are as following:



2

Leadership Activities: Uniformed Bodies Courses offered by the Centre of Soft Skills Development which include Reserve Officer Training Unit (PALAPES), Undergraduate Voluntary Police Corps (SUKSIS), Undergraduate Civil Defence (SISPA), National Service Volunteer Brigade (BSKN), Red Crescent Malaysia (BSM) and Undergraduate Auxiliary Fire Fighter (SBB) by completing the whole stipulated modules and declared passed.



**OPERATIONAL DEFINITION**

GRADUATE IN INTEGRATION OF NAQLI AND AQLI KNOWLEDGE

**2.0 Active Participation in Voluntary Activities**

Voluntary Activities include any activities of community engagement, community services and environmental sustainability either in or outside the campus and must be organised by or via the Centre of Innovation, Industrial and Community Networking including USIM Global Islamic Students Outreach (GISO) Expedition activities.



Community Engagement Activities refer to a minimum duration of 6 hours participation of activities that consist one of the following features:



Community Services Activities refer to a minimum duration of 6 hours participation of activities that contribute to the welfare of the community which is different from the community engagement activities.



Activities for Environmental Sustainability refer to a minimum of 6 hours participation of activities that contribute to the preservation and conservation of the nature.

**3.0 Obtained CGPA \geq 3.0 or its Equivalent**

Cumulative Grade Point Average (CGPA) is as defined by the Regulations of Universiti Sains Islam Malaysia (Undergraduate Studies with Honours) 2007 and must be read together with the Examination Regulations for Bachelor of Medicine and Surgery, Universiti Sains Islam Malaysia and the Examination Regulations for Bachelor of Dental Surgery, Universiti Sains Islam Malaysia.


OPERATIONAL DEFINITION

GRADUATE IN INTEGRATION OF NAQLI AND AQLI KNOWLEDGE

4.0 Obtained \geq 3 for MUET or its Equivalent

Achievement in Malaysian University English Test (MUET) is as what has been determined by Malaysian Examination Council as the following:

Band	Aggregate of Score	Description
6	260 - 300	Very good user - Very good command of the language. Highly expressive, fluent, accurate and appropriate language: hardly any inaccuracies. Very good understanding of language and contexts. Functions extremely well in the language.
5	220 - 259	Good user - Good command of the language. Expressive, fluent, accurate and appropriate language but with minor inaccuracies. Good understanding of language and contexts. Functions well in the language.
4	180 - 219	Competent user - Satisfactory command of the language. Satisfactory expressive and fluent, appropriate language but with occasional inaccuracies. Satisfactory understanding of language and contexts. Functions satisfactorily in the language.
3	140 - 179	Modest user - Modest command of the language. Modestly expressive and fluent, appropriate language but with noticeable inaccuracies. Modest understanding of language and contexts. Able to function modestly in the language.
2	100 - 139	Limited user - Limited command of the language. Lacks expressiveness, fluency and appropriacy: inaccurate use of the language resulting in breakdown in communication. Limited understanding of language and contexts. Limited ability to function in the language.
1	Below 100	Extremely limited user - Poor command of the language. Unable to use language to express ideas: inaccurate use of the language resulting in frequent breakdowns in communication. Little or poor understanding of language and contexts. Hardly able to function in the language.

5.0 Obtained \geq 3 for IJLA/MUAT or its Equivalent

Achievement in Imtihan Jamie Lughah Arabiyah (IJLA)/Malaysian University Arabic Test (MUAT) is as what has been determined by Malaysian Examination Council.





OPERATIONAL DEFINITION
GRADUATE IN INTEGRATION OF NAQLI AND AQLI KNOWLEDGE

6.0 Attended A Third Language Course

Attended a Third Language Course is defined as registered and attended any language courses offered by Faculty of Major Languages Studies for at least a minimum of one (1) Semester of Academic Session other than mother tongue, English, and Arabic Language.

7.0 Obtained Merit Points ≥ 20 in Extracurricular Transcript

Merit points in the **Extracurricular Transcript** is calculated as follows:

LEVEL OF INVOLVEMENT		Merit Point	LEVEL OF ACHIEVEMENT		Merit Point
Level of Involvement			Level of Achievement		
President / Equivalent	5		First Place / Equivalent	5	
Vice President / Equivalent	4		First Runner Up / Equivalent	4	
Secretary / Equivalent	3		Second Runner Up / Equivalent	3	
Treasurer / Equivalent	2		Semi Final	2	
Bureau / Exco/ Committee / Equivalent	1		Participant	1	
Member / Equivalent					
Participant					
LEVEL		Merit Point	LEVEL		Merit Point
Level			Level		
International	5		International	5	
National	4		National	4	
State	3		State	3	
University / District	2		University / District	2	
Department / Residential College	1		Department / Residential College	1	



SOARING
UPWARDS



OPERATIONAL DEFINITION

GRADUATE IN INTEGRATION OF NAQLI AND AQLI KNOWLEDGE



8.0 Active Participation in Arts and Cultural Activities

Arts and Cultural Activities include any activities offered by or via Cultural Centre or Centre of Soft Skills Development either in or outside the campus, either with or without credit for a minimum duration of 6 hours participation and in compliance with related guidelines issued by the Department of Islamic Development.



9.0 Active Participation in Sunnah Sports and Riadah



Sunnah Sports and Riadah Activities include any activities offered by or via Sport Centre or Centre of Soft Skills Development either in or outside the campus, either with or without credit which include sports categorised as Sunnah Rasulullah S.A.W. namely archery, swimming, horse riding and martial arts/self defense for a minimum duration of 6 hours participation or any other sports beneficial for health for a minimum duration of 6 hours participation.



10.0 Active Participation in Internationalisation Activities

Internationalisation activities is defined as activities organised outside of Malaysia and require Malaysian passport or visa to pass the border of the country or activities organised in Malaysia which require involvement of international participants with the ratio of 40% international participants and 60% local participants organised by or via USIM 'Alamiyyah.

The activities must be an intellectual / academic oriented or voluntary (community engagement activities, community services or environmental sustainability activities) organised by either USIM or any other organisations permitted by USIM or a collaboration of both USIM and the organisation either with or without credit determined as the following:

Type of Activities	Duration
International Mobility	Minimum of 2 days (excluding the day of departure and arrival)
Global Islamic Students Outreach (GISO)	Minimum of 3 days or 18 hours (excluding the day of departure and arrival)
Course / Conference	Total of days for course/seminar is minimum of 1 day (6 hours of course/seminar)
Industrial Training	Determined by respective faculty



OPERATIONAL DEFINITION
GRADUATE IN INTEGRATION OF NAQLI AND AQLI KNOWLEDGE

11.0 Passed the National Physical Fitness Test

Passed the National Physical Fitness Test according to the age limit, gender and time / distance as follows:



Level		Minutes	
5	Excellent	♂ < 12:00	♀ < 15:00
4	Good	♂ 12:01 - 15:00	♀ 15:01 - 20:00
3	Satisfactory	♂ 15:01 - 20:00	♀ 20:01 - 25:00
2	Poor	♂ 20:01 - 25:00	♀ 25:01 - 30:00
1	Very Poor	♂ 25:01 - 30:00	♀ 30:01 - 35:00

Level	Total Count
5 Excellent	> 50
4 Good	40-49
3 Satisfactory	30-39
2 Poor	20-29
1 Very Poor	≤ 19



Level	Total Count
5 Excellent	♂ > 43 ♀ > 36
4 Good	♂ 37-42 ♀ 31 - 35
3 Satisfactory	♂ 33-36 ♀ 25 - 30
2 Poor	♂ 29-32 ♀ 21 - 24
1 Very Poor	♂ < 28 ♀ < 20



OPERATIONAL DEFINITION
GRADUATE IN INTEGRATION OF NAQLI AND AQLI KNOWLEDGE



Minimum Level of Fitness

Level	Measurement (inch)
5 Excellent	Male: ≥ 27 , Female: ≥ 30
4 Good	Male: 17 - 26, Female: 21 - 29
3 Satisfactory	Male: 6 - 16, Female: 11 - 20
2 Poor	Male: 1 - 5, Female: 1 - 10
1 Very Poor	Male: < 0 , Female: < 0

Minimum Level of Fitness

Level	Measurement (inch)
5 Excellent	Male: > 88 , Female: > 72
4 Good	Male: 79 - 87, Female: 62 - 71
3 Satisfactory	Male: 69 - 78, Female: 53 - 61
2 Poor	Male: 60 - 68, Female: 43 - 52
1 Very Poor	Male: < 60 , Female: < 43



Minimum Level of Fitness

Test	Level	Age and Gender
2.4km Run	Satisfactory	25 years and below
Push Up	Satisfactory	25 years and below
Sit Up	Satisfactory	25 years and below
Sit and Reach	Satisfactory	25 years and below
Long Jump	Satisfactory	25 years and below

* Participation are required to pass all the test within the same session





SOARING
UPWARDS



OPERATIONAL DEFINITION

GRADUATE IN INTEGRATION OF NAQLI AND AQLI KNOWLEDGE

Operational Definition:

Balanced (التوازن) - Graduates demonstrate balance between behaviour (display good characters) and knowledge (posses knowledge and skills) to become active citizens and capable to contribute to the community locally, nationally and globally.



12.0 Active Participation in USIM GISO

USIM Global Islamic Students Outreach is defined as programme organised outside of Malaysia and requires Malaysian passport or visa to pass the border of the country with a minimum duration of three (3) days for student to get involved with voluntary activities including any community engagement activities, community services and environmental sustainability activities with a minimum duration of 18 hours organised either by USIM or any other organisations permitted by USIM or a collaboration of both USIM and the organisation.



13.0 Mastering Soft Skills (My3s) or (ePKI) with Score $\geq 6/10$

Soft skills include the following generic skills:

- K11** ➔ CS - Communication Skills
- K12** ➔ CTPS - Critical Thinking and Problem Solving
- K13** ➔ TS - Team Work Skills
- K14** ➔ LL - Lifelong Learning and Information Management
- K15** ➔ ES - Entrepreneurship Skills
- K16** ➔ EM - Ethics dan Professional Morals
- K17** ➔ LS - Leadership Skills
- K18** ➔ Mastering English and Arabic Language (ePKI only)

Details of the (My3s) and (ePKI) tests shall be determined by Centre of Soft Skills Development.

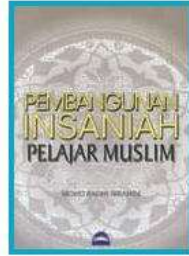




OPERATIONAL DEFINITION
GRADUATE IN INTEGRATION OF NAQLI AND AQLI KNOWLEDGE

14.0 Mutadayyin

Mutadayyin is defined as understanding and internalizing the basics of fardh ain constantly (theoretically and practically) and measured through the engagement of Liqa' Universiti activity throughout the study for at least 7 times of meeting every semester and of not less than 1 hour for each meeting and passed Mutadayyin test prescribed by the Islamic Centre.



15.0 No Disciplinary Actions

No Disciplinary Actions is defined as never been charged for any kind of disciplinary actions as stated under the Rules of Universiti Sains Islam Malaysia (Student Discipline) 2009 as follows:



16.0 Registered as Voter with the Election Commission of Malaysia



Any Malaysian student, who has reached the age of 21 and above, resides at any constituency and is qualified to vote should register himself/herself as a Voter with the Election Commission of Malaysia.



OPERATIONAL DEFINITION
GRADUATE IN INTEGRATION OF NAQLI AND AQLI KNOWLEDGE

Operational Definition:

Entrepreneurial (الثقافة التجارية) - Graduate demonstrates entrepreneurial thinking, innovative, open to changes, new ideas and new ways of doing things and possesses problem-solving skills to handle the demands of the present and future.



17.0 Active Participation in Entrepreneurship Activities

Entrepreneurship Activities includes any activities offered by or via the Centre of Students Entrepreneurship Development or Centre of Soft Skills Development either in or outside the campus, either with or without credit for a minimum duration of 6 hours participation (excluding any courses that enable students to prepare for **Business Model Canvas**).



18.0 Active Participation in Starting School and Finishing School Activities

18.1 Starting School

Activities offered by or via Student Affairs Division to help students to plan for their self and career development for a minimum duration of 4 hours participation and includes the following activities:



18.2 Finishing School

Activities offered by or via Student Affairs Division to help students embarking on the career for a minimum duration of 4 hours participation and includes the following activities:





SOARING
UPWARDS



OPERATIONAL DEFINITION

GRADUATE IN INTEGRATION OF NAQLI AND AQLI KNOWLEDGE



19.0 Capable of Preparing a Business Model Canvas

Attended any courses to enable student to prepare a **Business Model Canvas** according to the specifications determined by the Centre of Student Entrepreneurship Development for a minimum duration of 6 hours participation.



20.0 Active Participation in Innovation Activities

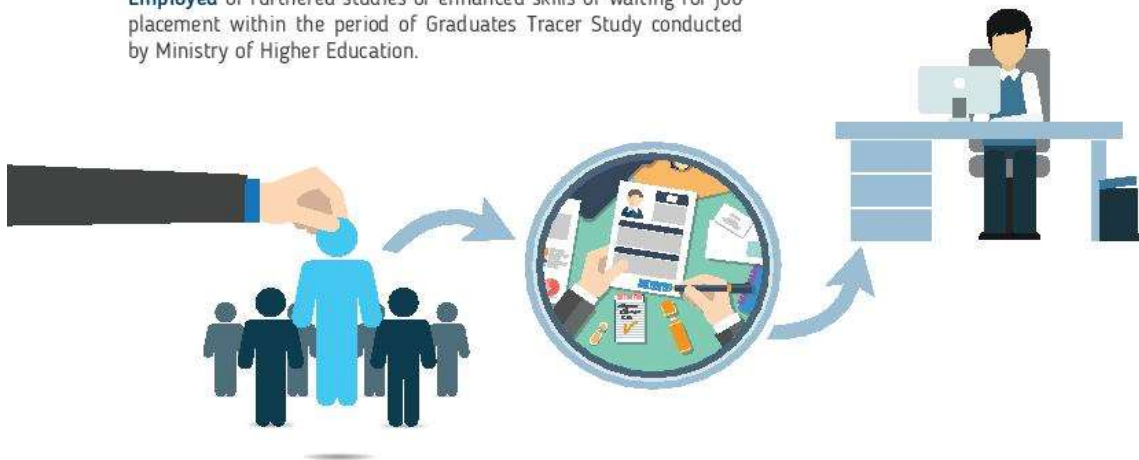


Innovation Activities include any activities of producing new products or services as a result of any methods, systems or effort either through new creations or improvization approved by or via the Research Management Centre either in or outside the campus with a minimum duration of 6 hours participation



21.0 Employed within ≤ 6 Months

Employed or furthered studies or enhanced skills or waiting for job placement within the period of Graduates Tracer Study conducted by Ministry of Higher Education.




SOARING UPWARDS

MEASUREMENT OF SCORES

GRADUATE IN INTEGRATION OF NAQLI AND AQLI KNOWLEDGE

WEIGHTAGE FOR CRITERIA OF GIINA MODEL

CRITERIA OF GIINA MODEL

FRACTION OF WEIGHTAGE

1.

HOLISTIC

Graduates possess comprehensive characteristics including intellectual, spiritual, emotional and physical that help develop their personalities



- | ① | Active Participation in Leadership Activities | 5% | <input type="checkbox"/> | | | | | | | | | | |
|-----------------|--|------------|--------------------------|-------------|----|-------------|----|-------------|----|-----------------|----|--|--|
| ② | Active Participation in Voluntary Activities | 5% | <input type="checkbox"/> | | | | | | | | | | |
| ③ | Obtained CGPA \geq 3.0 or its Equivalent | 4% | <input type="checkbox"/> | | | | | | | | | | |
| | <table border="1"> <thead> <tr> <th>CGPA Range</th> <th>Percentage</th> </tr> </thead> <tbody> <tr> <td>3.00 - 3.25</td> <td>1%</td> </tr> <tr> <td>3.26 - 3.50</td> <td>2%</td> </tr> <tr> <td>3.51 - 3.75</td> <td>3%</td> </tr> <tr> <td>3.76 - 4.00</td> <td>4%</td> </tr> </tbody> </table> | CGPA Range | Percentage | 3.00 - 3.25 | 1% | 3.26 - 3.50 | 2% | 3.51 - 3.75 | 3% | 3.76 - 4.00 | 4% | | |
| CGPA Range | Percentage | | | | | | | | | | | | |
| 3.00 - 3.25 | 1% | | | | | | | | | | | | |
| 3.26 - 3.50 | 2% | | | | | | | | | | | | |
| 3.51 - 3.75 | 3% | | | | | | | | | | | | |
| 3.76 - 4.00 | 4% | | | | | | | | | | | | |
| ④ | Obtained \geq Band 3 in MUET or its Equivalent | 4% | <input type="checkbox"/> | | | | | | | | | | |
| | <table border="1"> <thead> <tr> <th>MUET Band</th> <th>Percentage</th> </tr> </thead> <tbody> <tr> <td>3</td> <td>1%</td> </tr> <tr> <td>4</td> <td>2%</td> </tr> <tr> <td>5</td> <td>3%</td> </tr> <tr> <td>6</td> <td>4%</td> </tr> </tbody> </table> | MUET Band | Percentage | 3 | 1% | 4 | 2% | 5 | 3% | 6 | 4% | | |
| MUET Band | Percentage | | | | | | | | | | | | |
| 3 | 1% | | | | | | | | | | | | |
| 4 | 2% | | | | | | | | | | | | |
| 5 | 3% | | | | | | | | | | | | |
| 6 | 4% | | | | | | | | | | | | |
| ⑤ | Obtained \geq Band 3 in MUAT/ IJLA or its Equivalent | 4% | <input type="checkbox"/> | | | | | | | | | | |
| ⑥ | Attended A Third Language Courses | 4% | <input type="checkbox"/> | | | | | | | | | | |
| ⑦ | Obtained Merit Points \geq 20 in Extracurricular Transcript | 4% | <input type="checkbox"/> | | | | | | | | | | |
| | <table border="1"> <thead> <tr> <th>Mata Merit</th> <th>Peratusan</th> </tr> </thead> <tbody> <tr> <td>20 - 50</td> <td>1%</td> </tr> <tr> <td>51 - 75</td> <td>2%</td> </tr> <tr> <td>76 - 100</td> <td>3%</td> </tr> <tr> <td>100 dan ke atas</td> <td>4%</td> </tr> </tbody> </table> | Mata Merit | Peratusan | 20 - 50 | 1% | 51 - 75 | 2% | 76 - 100 | 3% | 100 dan ke atas | 4% | | |
| Mata Merit | Peratusan | | | | | | | | | | | | |
| 20 - 50 | 1% | | | | | | | | | | | | |
| 51 - 75 | 2% | | | | | | | | | | | | |
| 76 - 100 | 3% | | | | | | | | | | | | |
| 100 dan ke atas | 4% | | | | | | | | | | | | |
| ⑧ | Active Participation in Arts and Cultural Activities* } | 4% | <input type="checkbox"/> | | | | | | | | | | |
| ⑨ | Active Participation in Sunnah Sports and Riadah* } | 4% | <input type="checkbox"/> | | | | | | | | | | |
| ⑩ | Active Participation in Internationalisation Activities | 4% | <input type="checkbox"/> | | | | | | | | | | |
| ⑪ | Passed the National Physical Fitness Test | 2% | <input type="checkbox"/> | | | | | | | | | | |

**only one will be calculated*



MEASUREMENT OF SCORES
GRADUATE IN INTEGRATION OF NAQLI AND AQLI KNOWLEDGE

WEIGHTAGE FOR CRITERIA OF GIINA MODEL

CRITERIA OF GIINA MODEL

FRACTION OF WEIGHTAGE

2. **BALANCED**
Graduates demonstrate balance between behaviour (display good characters) and knowledgeable (possess knowledge and skills) to become active citizens and capable to contribute to the community locally, nationally and globally.



Criteria	Description	Weightage	Fraction of Weightage
1	Active Participation in USIM Global Islamic Students Outreach (GISO)	8%	<div style="width: 8%;"></div>
2	Mastering Soft Skills Score ≥ 6/10 in (My3S) or (ePKI)	8%	<div style="width: 8%;"></div>
3	Mutadayyin	6%	<div style="width: 6%;"></div>
4	No Disciplinary Actions	6%	<div style="width: 6%;"></div>
5	Registered as Voter with the Election Commission	2%	<div style="width: 2%;"></div>

3. **ENTREPRENEURIAL**
Graduates demonstrate entrepreneurial thinking, innovative, open to change, new ideas and new ways of doing things and possess problem-solving skills to handle the demands of the present and future.



Criteria	Description	Weightage	Fraction of Weightage
1	Active Participation in Entrepreneurship Activities	10%	<div style="width: 10%;"></div>
2	Active Participation in Starting School and Finishing School Activities	8%	<div style="width: 8%;"></div>
3	Capable of Preparing a Business Model Canvas	6%	<div style="width: 6%;"></div>
4	Active Participation in Innovation Activities	6%	<div style="width: 6%;"></div>
5	Employed within 6 months upon Graduation*	-	<div style="width: 0%;"></div>

*not counted



MEASUREMENT OF SCORES
GRADUATE IN INTEGRATION OF NAQLI AND AQLI KNOWLEDGE



COMBINATION OF GIINA SCORE AND i-CGPA



Example:

Achievement

3.00 (GIINA Score)
2.75 (Integrated Cumulative Grade Point Average)

Formula

Weightage for GIINA Score = 0.3 (30%)
Weightage for i-CGPA = 0.7 (70%)

Calculation

$$\begin{aligned} &(0.3 \times 3.00) + (0.7 \times 2.75) \\ &= (0.9) + (1.925) \\ &= \mathbf{2.825} \end{aligned}$$

* Subject to the approval of the Senate