

THE MODEL OF GRADUATE IN INTEGRATION OF NAQLI AND AQLI KNOWLEDGE

Nasrul Hakim Ahmad
Senior Deputy Registrar

Masni Md Hasim
Senior Psychology Officer

Prof. Dato' Dr. Hassan Basri Awang Mat Dahan
Deputy Vice Chancellor (Student Affairs and Alumni)

Student Affairs Division
Universiti Sains Islam Malaysia
71800 Bandar Baru Nilai, Nilai, Negeri Sembilan
Malaysia





MINISTRY OF
EDUCATION
MALAYSIA

Malaysia Education Blueprint 2015-2025

(Higher Education)



LEADER IN THE INTEGRATION OF NAQLI AND AQLI KNOWLEDGE
الرائد في التكامل بين العلوم النقلية والعقلية

The 10 Shifts



LEADER IN THE INTEGRATION OF NAQLI AND AQLI KNOWLEDGE

الرائد في التكامل بين العلوم النقلية والعقلية



WHY INTEGRATION?



LEADER IN THE INTEGRATION OF NAQLI AND AQLI KNOWLEDGE
الرائد في التكامل بين العلوم النقلية والعقلية



RUKUN NEGARA

BAHAWASANYA negara kita Malaysia mendukung cita-cita untuk mencapai perpaduan yang lebih erat dalam kalangan seluruh masyarakatnya; memelihara satu cara hidup demokratik; mencipta masyarakat yang adil bagi kemakmuran negara yang akan dapat dinikmati bersama secara adil dan saksama; menjamin satu cara yang liberal terhadap tradisi-tradisi kebudayaannya yang kaya dan berbagai-bagai corak; membina satu masyarakat progresif yang akan menggunakan sains dan teknologi moden;

MAKA KAMI, rakyat Malaysia, berikrar akan menumpukan seluruh tenaga dan usaha kami untuk mencapai cita-cita tersebut berdasarkan atas prinsip-prinsip yang berikut:

- **KEPERCAYAAN KEPADA TUHAN**
- **KESETIAAN KEPADA RAJA DAN NEGARA**
- **KELUHURAN PERLEMBAGAAN**
- **KEDAULATAN UNDANG-UNDANG**
- **KESOPANAN DAN KESUSILAAN**

INTEGRATION IN RUKUN NEGARA?







SOARING UPWARDS
MALAYSIAN HIGHER EDUCATION



USIM MODEL

for
GRADUATE IN INTEGRATION OF
NAQLI AND AQLI KNOWLEDGE



**Malaysia Education Blueprint
(Higher Education)
2015 - 2025**

1st SHIFT
**HOLISTIC, BALANCED AND
ENTREPRENEURIAL GRADUATES**



VIDEO



Operational Definition:

Holistic (الشمولية) - Graduates possess comprehensive characteristics including intellectual, spiritual, emotional and physical that help to develop their personalities

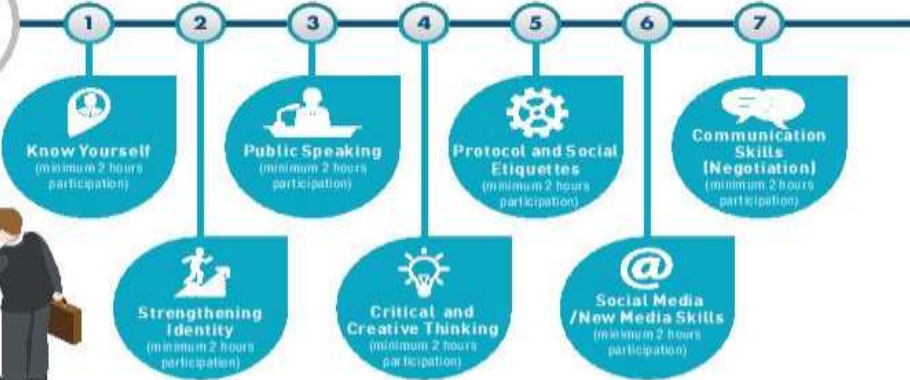


1.0 Active Participation in Leadership Activities

Leadership activities consist of two categories:

1

Leadership Activities: Leadership activities that fulfil any 3 out of 7 modules proposed by the Malaysian Universities (Council for Leadership and Training) (MAKLUM) and must be implemented by or through the Student Affairs Division. The prescribed modules are as following:



2

Leadership Activities: Uniformed Bodies Courses offered by the Centre of Soft Skills Development which include Reserve Officer Training Unit (PALAPES), Undergraduate Voluntary Police Corps (SUKSIS), Undergraduate Civil Defence (SISPA), National Service Volunteer Brigade (BSKN), Red Crescent Malaysia (BSM) and Undergraduate Auxiliary Fire Fighter (SBB) by completing the whole stipulated modules and declared passed.

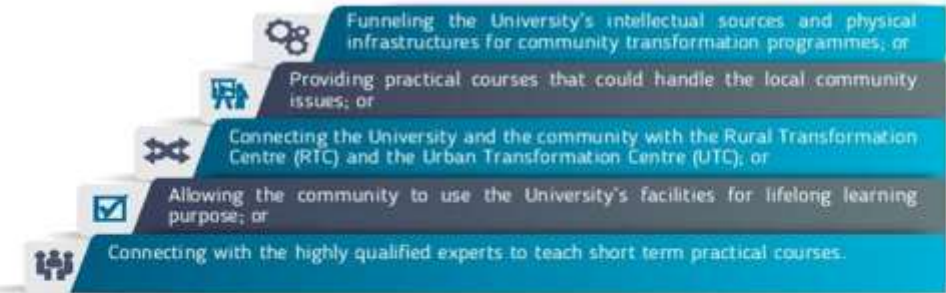


2.0 Active Participation in Voluntary Activities

Voluntary Activities include any activities of community engagement, community services and environmental sustainability either in or outside the campus and must be organised by or via the Centre of Innovation, Industrial and Community Networking including USIM Global Islamic Students Outreach (GISO) Expedition activities.



Community Engagement Activities refer to a minimum duration of 6 hours participation of activities that consist one of the following features:



Community Services Activities refer to a minimum duration of 6 hours participation of activities that contribute to the welfare of the community which is different from the community engagement activities.



Activities for Environmental Sustainability refer to a minimum of 6 hours participation of activities that contribute to the preservation and conservation of the nature.



3.0 Obtained CGPA ≥ 3.0 or its Equivalent



Cumulative Grade Point Average (CGPA) is as defined by the Regulations of Universiti Sains Islam Malaysia (Undergraduate Studies with Honours) 2007 and must be read together with the Examination Regulations for Bachelor of Medicine and Surgery, Universiti Sains Islam Malaysia and the Examination Regulations for Bachelor of Dental Surgery, Universiti Sains Islam Malaysia.

4.0 Obtained ≥ 3 for MUET or its Equivalent

Achievement in Malaysian University English Test (MUET) is as what has been determined by Malaysian Examination Council as the following:

Band	Aggregate of Score	Description
6	260 - 300	Very good user - Very good command of the language. Highly expressive, fluent, accurate and appropriate language; hardly any inaccuracies. Very good understanding of language and contexts. Functions extremely well in the language.
5	220 - 259	Good user - Good command of the language. Expressive, fluent, accurate and appropriate language but with minor inaccuracies. Good understanding of language and contexts. Functions well in the language.
4	180 - 219	Competent user - Satisfactory command of the language. Satisfactory expressive and fluent, appropriate language but with occasional inaccuracies. Satisfactory understanding of language and contexts. Functions satisfactorily in the language.
3	140 - 179	Modest user - Modest command of the language. Modestly expressive and fluent, appropriate language but with noticeable inaccuracies. Modest understanding of language and contexts. Able to function modestly in the language.
2	100 - 139	Limited user - Limited command of the language. Lacks expressiveness, fluency and appropriacy: inaccurate use of the language resulting in breakdown in communication. Limited understanding of language and contexts. Limited ability to function in the language.
1	Below 100	Extremely limited user - Poor command of the language. Unable to use language to express ideas: inaccurate use of the language resulting in frequent breakdowns in communication. Little or poor understanding of language and contexts. Hardly able to function in the language.

5.0 Obtained ≥ 3 for IJLA/MUAT or its Equivalent

Achievement in Imtihan Jamie Lughah Arabiyah (IJLA)/Malaysian University Arabic Test (MUAT) is as what has been determined by Malaysian Examination Council.



6.0 Attended A Third Language Course

Attended a Third Language Course is defined as registered and attended any language courses offered by Faculty of Major Languages Studies for at least a minimum of one (1) Semester of Academic Session other than mother tongue, English, and Arabic Language.

7.0 Obtained Merit Points ≥ 20 in Extracurricular Transcript

Merit points in the **Extracurricular Transcript** is calculated as follows:

LEVEL OF INVOLVEMENT		Merit Point	LEVEL OF ACHIEVEMENT		Merit Point
Level of Involvement		5	Level of Achievement		5
President / Equivalent		4	First Place / Equivalent		4
Vice President / Equivalent			First Runner Up / Equivalent		
Speaker / Equivalent			Second Runner Up / Equivalent		
Secretary / Equivalent		3	Semi Final		2
Treasurer / Equivalent			Participant		
Bureau / Exco/ Committee / Equivalent		2			1
Member / Equivalent					
Participant		1			
LEVEL		Merit Point	LEVEL		Merit Point
Level		5	Level		5
International		4	International		4
National			National		
State		3	State		3
University / District			University / District		
Department / Residential College		2	Department / Residential College		2
		1			1

8.0 Active Participation in Arts and Cultural Activities

Arts and Cultural Activities include any activities offered by or via Cultural Centre or Centre of Soft Skills Development either in or outside the campus, either with or without credit for a minimum duration of 6 hours participation and in compliance with related guidelines issued by the Department of Islamic Development.



9.0 Active Participation in Sunnah Sports and Riadah



Sunnah Sports and Riadah Activities include any activities offered by or via Sport Centre or Centre of Soft Skills Development either in or outside the campus, either with or without credit which include sports categorised as Sunnah Rasulullah S.A.W, namely archery, swimming, horse riding and martial arts/self defense for a minimum duration of 6 hours participation or any other sports beneficial for health for a minimum duration of 6 hours participation.

10.0 Active Participation in Internationalisation Activities

Internationalisation activities is defined as activities organised outside of Malaysia and require Malaysian passport or visa to pass the border of the country or activities organised in Malaysia which require involvement of international participants with the ratio of 40% international participants and 60% local participants organised by or via USIM 'Alamiyyah.

The activities must be an intellectual / academic oriented or voluntary (community engagement activities, community services or environmental sustainability activities) organised by either USIM or any other organisations permitted by USIM or a collaboration of both USIM and the organisation either with or without credit determined as the following:

Type of Activities	Duration
International Mobility	Minimum of 2 days (excluding the day of departure and arrival)
Global Islamic Students Outreach (GISO)	Minimum of 3 days or 18 hours (excluding the day of departure and arrival)
Course / Conference	Total of days for course/seminar is minimum of 1 day (6 hours of course/seminar)
Industrial Training	Determined by respective faculty

11.0 Passed the National Physical Fitness Test

Passed the **National Physical Fitness Test** according to the age limit, gender and time / distance as follows:



Level	Minutes
5 Excellent	< 12:00
4 Good	12:01 - 15:00
3 Satisfactory	15:01 - 20:00
2 Poor	20:01 - 25:00
1 Very Poor	25:01 - 30:00

Level	Total Count
5 Excellent	> 50
4 Good	40-49
3 Satisfactory	30-39
2 Poor	20-29
1 Very Poor	≤ 19



Level	Total Count
5 Excellent	> 43
4 Good	37-42
3 Satisfactory	33-36
2 Poor	29-32
1 Very Poor	≤ 28


Minimum Level of Fitness

Level	Measurement (inch)
5 Excellent	> 27 > 30
4 Good	17 - 26 21 - 29
3 Satisfactory	6 - 16 11 - 20
2 Poor	1 - 5 1 - 10
1 Very Poor	< 0 < 0

Minimum Level of Fitness

Level	Measurement (inch)
5 Excellent	> 88 > 72
4 Good	79 - 87 62 - 71
3 Satisfactory	69 - 78 53 - 61
2 Poor	60 - 68 43 - 52
1 Very Poor	< 60 < 43


Minimum Level of Fitness

Test	Level	Age and Gender
2.4km Run	Satisfactory	25 years and below
Push Up	Satisfactory	25 years and below
Sit Up	Satisfactory	25 years and below
Sit and Reach	Satisfactory	25 years and below
Long Jump	Satisfactory	25 years and below

* Participation are required to pass all the test within the same session


Operational Definition:

Balanced (التوازن) - Graduates demonstrate balance between behaviour (display good characters) and knowledge (posses knowledge and skills) to become active citizens and capable to contribute to the community locally, nationally and globally.


12.0 Active Participation in USIM GISO

USIM Global Islamic Students Outreach is defined as programme organised outside of Malaysia and requires Malaysian passport or visa to pass the border of the country with a minimum duration of three (3) days for student to get involved with voluntary activities including any community engagement activities, community services and environmental sustainability activities with a minimum duration of 18 hours organised either by USIM or any other organisations permitted by USIM or a collaboration of both USIM and the organisation.


13.0 Mastering Soft Skills (My3s) or (ePKI) with Score ≥ 6/10

Soft skills include the following generic skills:

- CS - Communication Skills
- CTPS - Critical Thinking and Problem Solving
- TS - Team Work Skills
- LL - Lifelong Learning and Information Management
- ES - Entrepreneurship Skills
- EM - Ethics dan Professional Morals
- LS - Leadership Skills
- Mastering English and Arabic Language (ePKI only)

Details of the (My3s) and (ePKI) tests shall be determined by Centre of Soft Skills Development.



14.0 Mutadayyin

Mutadayyin is defined as understanding and internalizing the basics of fardh ain constantly (theoretically and practically) and measured through the engagement of Liqa' Universiti activity throughout the study for at least 7 times of meeting every semester and of not less than 1 hour for each meeting and passed Mutadayyin test prescribed by the Islamic Centre.



15.0 No Disciplinary Actions

No Disciplinary Actions is defined as never been charged for any kind of disciplinary actions as stated under the Rules of Universiti Sains Islam Malaysia (Student Discipline) 2009 as follows:



16.0 Registered as Voter with the Election Commission of Malaysia



Any Malaysian student, who has reached the age of 21 and above, resides at any constituency and is qualified to vote should register himself/herself as a **Voter** with the Election Commission of Malaysia.

Operational Definition: Entrepreneurial (الثقافة التجارية) - Graduate demonstrates entrepreneurial thinking, innovative, open to changes, new ideas and new ways of doing things and possesses problem-solving skills to handle the demands of the present and future.

17.0 Active Participation in Entrepreneurship Activities

Entrepreneurship Activities includes any activities offered by or via the Centre of Students Entrepreneurship Development or Centre of Soft Skills Development either in or outside the campus, either with or without credit for a minimum duration of 6 hours participation (excluding any courses that enable students to prepare for **Business Model Canvas**).



18.0 Active Participation in Starting School and Finishing School Activities

18.1 Starting School

Activities offered by or via Student Affairs Division to help students to plan for their self and career development for a minimum duration of 4 hours participation and includes the following activities:



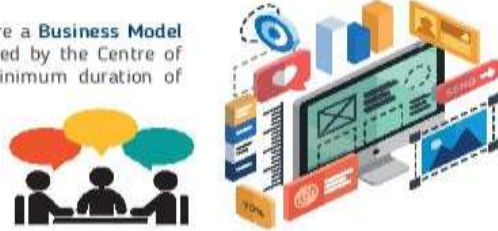
18.2 Finishing School

Activities offered by or via Student Affairs Division to help students embarking on the career for a minimum duration of 4 hours participation and includes the following activities:



19.0 Capable of Preparing a Business Model Canvas

Attended any courses to enable student to prepare a **Business Model Canvas** according to the specifications determined by the Centre of Student Entrepreneurship Development for a minimum duration of 6 hours participation.



20.0 Active Participation in Innovation Activities

Innovation Activities include any activities of producing new products or services as a result of any methods, systems or effort either through new creations or improvisation approved by or via the Research Management Centre either in or outside the campus with a minimum duration of 6 hours participation



21.0 Employed within ≤ 6 Months

Employed or furthered studies or enhanced skills or waiting for job placement within the period of Graduates Tracer Study conducted by Ministry of Higher Education.



WEIGHTAGE FOR CRITERIA OF QINA MODEL

CRITERIA OF QINA MODEL

FRACTION OF WEIGHTAGE

1. **HOLISTIC**
 Graduates possess comprehensive characteristics including intellectual, spiritual, emotional and physical that help develop their personalities



- 1 Active Participation in Leadership Activities 5%
- 2 Active Participation in Voluntary Activities 5%
- 3 Obtained CGPA ≥ 3.0 or its Equivalent 4%

CGPA Range	Percentage
3.00 - 3.25	1%
3.26 - 3.50	2%
3.51 - 3.75	3%
3.76 - 4.00	4%

- 4 Obtained ≥ Band 3 in MUET or its Equivalent 4%



MUET Band	Percentage
3	1%
4	2%
5	3%
6	4%

- 5 Obtained ≥ Band 3 in MUAT/ ULA or its Equivalent 4%
- 6 Attended A Third Language Courses 4%
- 7 Obtained Merit Points ≥ 20 in Extracurricular Transcript 4%

Mata Merit	Peratusan
20 - 50	1%
51 - 75	2%
76 - 100	3%
100 dan ke atas	4%

- 8 Active Participation in Arts and Cultural Activities* } 4%
- 9 Active Participation in Sunnah Sports and Riadah* } 4%
- 10 Active Participation in Internationalisation Activities 4%
- 11 Passed the National Physical Fitness Test 2%

*only one will be calculated

WEIGHTAGE FOR CRITERIA OF GIINA MODEL	CRITERIA OF GIINA MODEL	FRACTION OF WEIGHTAGE
2. BALANCED Graduates demonstrate balance between behaviour (display good characters) and knowledgeable (possess knowledge and skills) to become active citizens and capable to contribute to the community locally, nationally and globally.	1 Active Participation in USIM Global Islamic Students Outreach (GISO)	8%
	2 Mastering Soft Skills Score ≥ 6/10 in (My3S) or (ePKI)	8%
	3 Mutadayyin	6%
	4 No Disciplinary Actions	6%
	5 Registered as Voter with the Election Commission	2%
		
3. ENTREPRENEURIAL Graduates demonstrate entrepreneurial thinking, innovative, open to change, new ideas and new ways of doing things and possess problem-solving skills to handle the demands of the present and future.	1 Active Participation in Entrepreneurship Activities	10%
	2 Active Participation in Starting School and Finishing School Activities	8%
	3 Capable of Preparing a Business Model Canvas	6%
	4 Active Participation in Innovation Activities	6%
	5 Employed within 6 months upon Graduation*	-
		

*not counted



COMBINATION OF GIINA SCORE AND i-CGPA

Example:

Achievement

3.00 (GIINA Score)
 2.75 (Integrated Cumulative Grade Point Average)

Formula

Weightage for GIINA Score = 0.3 (30%)
 Weightage for i-CGPA = 0.7 (70%)

Calculation

$$\begin{aligned}
 &(0.3 \times 3.00) + (0.7 \times 2.75) \\
 &= (0.9) + (1.925) \\
 &= \mathbf{2.825}
 \end{aligned}$$

* Subject to the approval of the Senate

GIINA Score for Bachelor Graduate 2016 (Based on Criteria)

No.	Criteria	Range	Weightage	FST	FSU	FEM	FPQS	FPBU	FPG	FPSK	FKP	FKAB	Number of Graduates
1	Active Participation in Leadership Activities		5%	382	299	299	401	451	34	48	349	26	2289
			0%	0	0	0	0	0	0	0	0	0	0
2	Active Participation in Voluntary Activities		5%	244	141	164	153	342	34	38	169	3	1288
			0%	138	158	135	248	109	0	10	180	23	1001
3	Obtained CGPA \geq Band 3.00 or Equivalent	3.76 - 4.00	4%	5	6	8	11	97	0	0	3	0	130
		3.51 - 3.75	3%	58	35	48	86	198	0	5	60	0	490
		3.26 - 3.50	2%	135	70	72	102	97	2	4	122	11	615
		3.00 - 3.25	1%	121	87	68	134	45	11	12	114	13	605
		0.00 - 2.99	0%	63	101	103	68	14	21	27	50	2	449
4	Obtained \geq Band 3 in MUET or Equivalent	6	4%	0	0	0	0	0	0	0	0	0	0
		5	3%	2	2	1	0	1	0	3	1	0	10
		4	2%	46	26	25	14	14	9	45	19	3	201
		3	1%	334	271	273	387	217	25	0	329	23	1859
		0-2	0%	0	0	0	0	219	0	0	0	0	219
5	Obtained \geq Band 3 in IJLA/MUAT or Equivalent		4%										
			0%										
6	Attended Third Language Course		4%	166	15	23	7	155	0	0	23	9	398
			0%	216	284	276	394	296	34	48	326	17	1891
7	Obtained Merit Points \geq 20 in Co-Curricular Transcript	\geq 100	4%	39	29	38	55	27	2	11	49	0	250
		76-99	3%	24	8	17	25	6	1	7	36	1	125
		51-75	2%	53	37	40	67	17	4	15	76	0	309
		20-50	1%	190	122	94	126	54	20	7	110	2	725
		0-19	0%	76	103	110	128	347	7	8	78	23	880
8	Active Participation in Arts and Cultural Activities		4%	9	10	6	17	8	0	0	20	0	70
			0%	373	289	293	384	443	34	48	329	26	2219

GIINA Score for Bachelor Graduate 2016 (Based on Criteria)

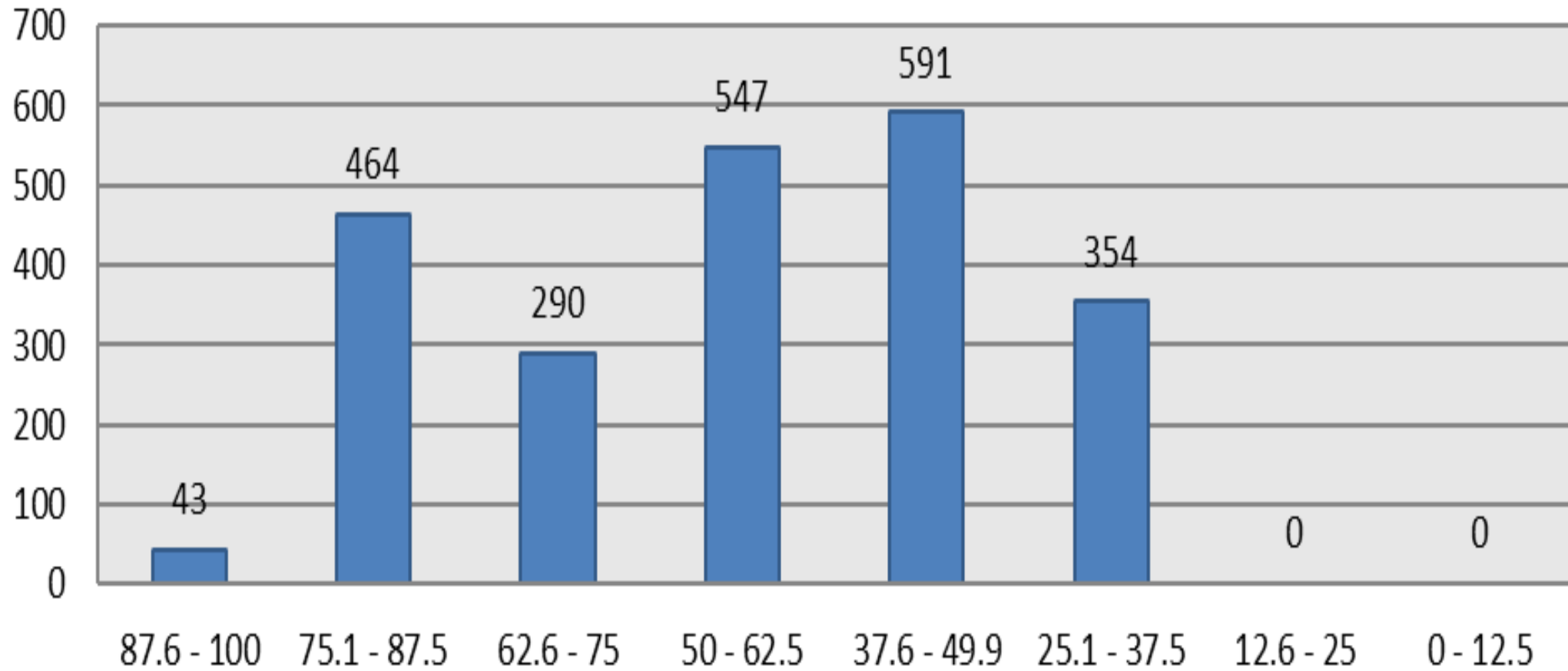
No.	Criteria	Range	Weightage	FST	FSU	FEM	FPQS	FPBU	FPG	FPSK	FKP	FKAB	Number of Graduates
9	Active Participation in Sunnah Sports and Riadah		4%	235	139	163	208	113	26	32	177	10	1103
			0%	147	160	136	193	338	8	16	172	16	1186
10	Active Participation in Internationalisation Activities		4%	235	123	163	206	41	25	17	166	0	976
			0%	147	176	136	195	410	9	31	183	26	1313
11	Passed the National Physical Fitness Test		2%										
			0%										
12	Active Participation in USIM Global Islamic Students Outreach (GISO)		8%	214	118	130	108	37	25	14	128	0	774
			0%	168	181	169	293	414	9	34	221	26	1515
13	Obtained Soft Skills Score $\geq 6/10$ in (My3s) or (ePKI)		8%	213	213	186	286	83	22	33	258	5	1299
			0%	169	86	113	115	368	12	15	91	21	990
14	Mutadayyin		6%	355	212	259	318	133	34	48	311	23	1693
			0%	27	87	40	83	318	0	0	38	3	596
15	No Disciplinary Actions		6%	376	296	294	399	445	33	48	346	26	2263
			0%	6	3	5	2	6	1	0	3	0	26
16	Registered as Voter with the Election Commission		2%	361	258	270	366	199	20	45	315	0	1834
			0%	21	41	29	35	252	14	3	34	26	455
17	Active Participation in Entrepreneurship Activities		10%	225	120	152	82	37	25	14	132	1	788
			0%	157	179	147	319	414	9	34	217	25	1501
18	Active Participation in 'Starting School and Finishing School' Activities		8%	382	299	299	401	451	34	48	349	26	2289
			0%	0	0	0	0	0	0	0	0	0	0
19	Capable of Preparing a Business Model Canvas		6%	382	299	299	401	451	34	48	349	26	2289
			0%	0	0	0	0	0	0	0	0	0	0
20	Active Participation in Innovation Activities		6%	89	20	70	22	12	9	7	18	26	273
			0%	293	279	229	379	439	25	41	331	0	2016
21	Employed within 6 Months upon Graduation												



GIINA Score	Number of Graduates
87.6 - 100	43
75.1 - 87.5	464
62.6 - 75	290
50 - 62.5	547
37.6 - 49.9	591
25.1 - 37.5	354
12.6 - 25	0
0 - 12.5	0
Total	2289



**GRAPH 1: Distribution of GIINA Score
Bachelor Graduate 2016 (Overall)**



HIGHLIGHTS

100% achieved more than 25% of GIINA Score

58.7% achieved **above 50%** of GIINA Score

41.3% scored **below 50%** of GIINA Score



HIGHLIGHTS

18 measured criteria

7 criteria less than 50% attainment

11 criteria more than 50% attainment



HIGHLIGHTS

Lowest percentage of attainment

“Active Participation in Arts and Cultural Activities” (3.1%)

Highest percentage of attainment

“Active Participation in Leadership Activities” (100%)

“Active Participation in Starting School and Finishing School Activities” (100%)

“Capable of Preparing a Business Model Canvas” (100%)



HIGHLIGHTS

Emphasis on the 7 criteria of less than 50% attainment

“Attended Third Language Course” (17.4%)

“Active Participation in Innovation Activities” (11.9%)

“Active Participation in Arts and Cultural Activities” (3.1%)



Thank You

